

RICE INTERCEPTOR

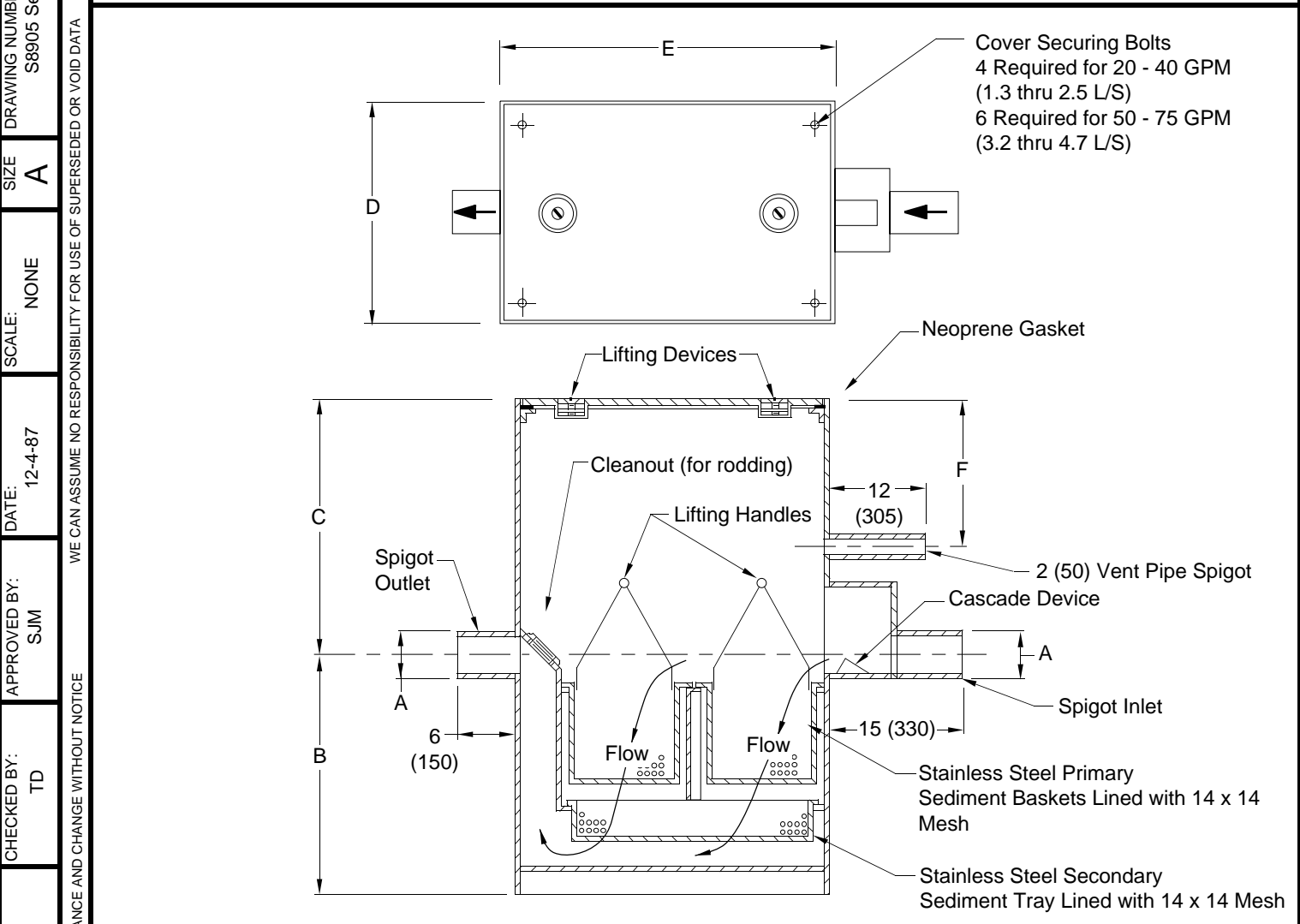


Fig. No.	Flow Rate		Inlet & Outlet (Pipe Size)	Roughing Dimensions				
	GPM	L/S		A	B	C	Width D	Length E
8905-20	20	1.3	03 (80)	24 (610)	16 (405)	20 (510)	26 (660)	7 (180)
8905-30	30	1.9	04 (100)	24 (610)	16 (405)	20 (510)	33 (840)	7 (180)
8905-40	40	2.5	04 (100)	30 (760)	22 (560)	24 (610)	36 (915)	7 (180)
8905-50	50	3.2	04 (100)	32 (815)	24 (610)	30 (760)	42 (1065)	7 (180)
8905-75	75	4.7	06 (150)	36 (915)	28 (710)	36 (915)	48 (1220)	7 (180)

REGULARLY FURNISHED:
 Fabricated Steel with Gray Duco Coating,
 Complete with Stainless Steel Primary Sediment Baskets, Stainless Steel Secondary Sediment Tray, Spigot Inlet and Outlet and Secured Gasketed Cover with Lifting Devices.

VARIATIONS:
 All Stainless Steel Unit -SS
 T Threaded Inlet and Outlet Connections

NOTE: Dimensions shown in parentheses are in millimeters.

8905 Series

DIMENSIONS ARE SUBJECT TO MANUFACTURERS TOLERANCE AND CHANGE WITHOUT NOTICE

DRAWING NUMBER S8905 Series
 SIZE A
 SCALE: NONE
 DATE: 12-4-87
 APPROVED BY: SJM
 CHECKED BY: TD
 DRAWN BY: VGD

D

REV.	DATE	DESCRIPTION	BY	CKD. BY	WEIGHT POUNDS	VOLUME CUBIC FEET	FIGURE NUMBER
D	10-23-97	Added 14 x 14 Mesh	EMB	BS			8905 Series
C	9-23-96	Rev Dwg	EMB	BS			
B	5-23-95	Submittal Update	EMB	BS			
A	5-2-94	Changed Dim	TBW	BW			