

**SMITH® JAY R. SMITH MFG. CO.®**  
 MEMBER OF MORRIS GROUP INTERNATIONAL  
 POST OFFICE BOX 3237  
 MONTGOMERY, ALABAMA 36109-0237 (USA)  
 TEL: 334-277-8520 FAX: 334-272-7396 www.jrsmith.com



LOCATION

DRAWING NUMBER  
S9812M-ADA

SIZE  
A

SCALE:  
NONE

DATE:  
03/20/00

APPROVED BY:  
PJ

CHECKED BY:  
PJ

DRAWN BY:  
JJ

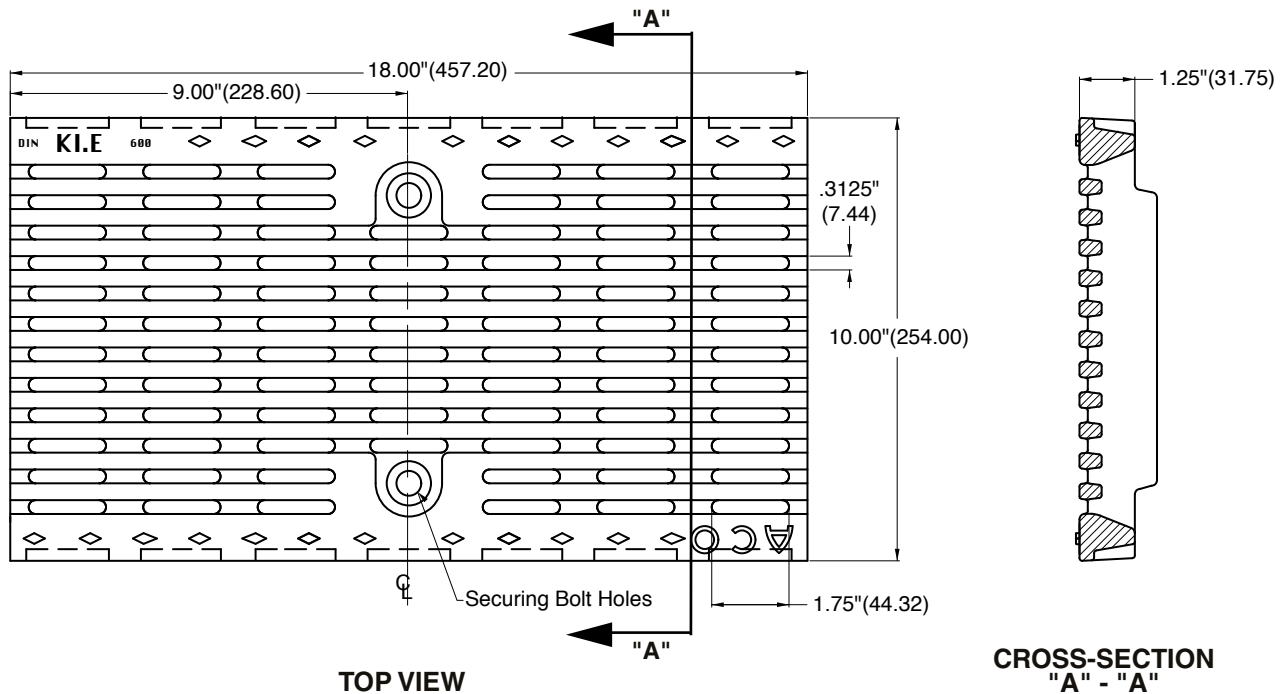
9812M-ADA

WE CAN ASSUME NO RESPONSIBILITY FOR USE OF SUPERSEDED OR VOID DATA

# 9812 SERIES DUCTILE IRON ADA GRATE

"SPECIFICATION SHEET"  
OPEN AREA: 42 SQ. IN.

Extra Heavy Duty, DIN 19580 Class E - 135,000 lbs - 2,788 psi for Commercial Solid Tire Traffic Patterns, Forklifts and Impacts from Steel Struts or Metal Wheels.



**REGULARLY FURNISHED:**  
 Black Duco coated Ductile Iron  
 Heel-Proof, ADA Compliant Grate.

**NOTE:** Dimensions shown in parentheses are in millimeters.



NOTE: Conforms to ASME A112.6.3

REV.	DATE	DESCRIPTION	BY	CKD. BY	WEIGHT POUNDS	VOLUME CUBIC FEET	FIGURE NUMBER
C	3-31-16	Revised Reg. Furn.	TBW	PJ			<b>9812M-ADA</b>
B	2-27-08	Added Note	TBW	PJ			
A	08/19/05	Revised Load Class	JJ	PJ			