



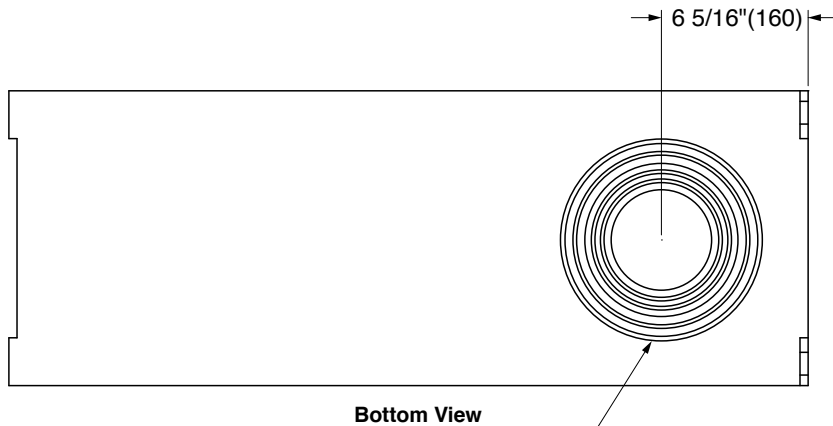
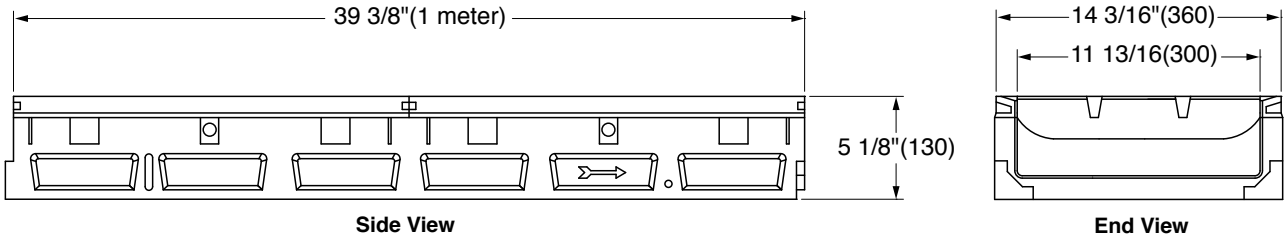
JAY R. SMITH MFG. CO.
 MEMBER OF MORRIS GROUP INTERNATIONAL
 POST OFFICE BOX 3237
 MONTGOMERY, ALABAMA 36109-0237 (USA)
 TEL: 334-277-8520 FAX: 334-272-7396 www.jrsmith.com



LOCATION

14" WIDE POWERDRAIN® SHALLOW DRAIN SYSTEM w/INTEGRAL DUCTILE IRON EDGE RAIL

FUNCTION: Used in all surface drainage applications. Shallow non-sloping channels may be assembled in any length utilizing integral ductile iron rails that allow for extra heavy duty hard wheel traffic applications.



6"(152) and 8"(203) Sch 40 Knockout/Drillout

REGULARLY FURNISHED:

1 meter (3.28') Precast Polyester Concrete Channel of Interlocking Design with No Slope. Channel has an Integral Ductile Iron Edge Rail and 12" Internal Width. Supplied with Secured Ductile Iron Slotted Grates.

VARIATIONS:

- Grate Specifications (See Back)
- End Cap
- Grate Removal Tool

Note: This Trench Drain System is Designed for "On Grade Applications Only" as There are No Provisions for a Flashing Flange or Flashing Clamp



DRAWING NUMBER
S9807

SIZE
A

SCALE:
NONE

DATE:
8-4-15

APPROVED BY:
MRD

CHECKED BY:
MRD

DRAWN BY:
TBW

9807

WE CAN ASSUME NO RESPONSIBILITY FOR USE OF SUPERSEDED OR VOID DATA

DIMENSIONS ARE SUBJECT TO MANUFACTURERS TOLERANCE AND CHANGE WITHOUT NOTICE

REV.	DATE	DESCRIPTION	BY	CKD. BY	WEIGHT POUNDS	VOLUME CUBIC FEET	FIGURE NUMBER 9807



JAY R. SMITH MFG. CO.
 MEMBER OF MORRIS GROUP INTERNATIONAL
 POST OFFICE BOX 3237
 MONTGOMERY, ALABAMA 36109-0237 (USA)
 TEL: 334-277-8520 FAX: 334-272-7396 www.jrsmith.com



MEMBER OF:



LOCATION

14" WIDE POWERDRAIN® SHALLOW DRAIN SYSTEM w/INTEGRAL DUCTILE IRON EDGE RAIL

Extra Heavy Duty, DIN 19580/EN 1433 Load Class E:
135,000 lbs - 2323 psi. For commercial solid tire forklift traffic patterns, forklifts and impacts from steel struts and metal wheels.

* **Powerlok ADA** - 3/4(19) x 5/16(8) longitudinal ductile iron slotted grate (56.00 sq in.)

Extra Heavy Duty, DIN 19580/EN 1433 Load Class F:
202,320 lbs - 4182 psi. For aircraft runways, docks, heavy fork trucks, and heavy wheel loads.

* **Powerlok Slotted** - 4 1/2(114) x 11/16(18) ductile iron slotted grate (126.00 sq. in.)

*Available With Powerlok Locking Devices Only

DEEP END DEPTHS 9807 SYSTEM

Channel Number	Invert Depth		Slope	Slotted Weight Lbs.	ADA Weight Lbs.
	Inch	mm			
9807	4.00	100	0.0%	186.2	198.4

Note: For overall depth of channel add 1.20" to invert depth shown.



DRAWING NUMBER
S9807-BS

SIZE
A

SCALE:
NONE

DATE:
8-4-15

APPROVED BY:
MRD

CHECKED BY:
MRD

DRAWN BY:
TBW

FIGURE NUMBER
9807-BS

WE CAN ASSUME NO RESPONSIBILITY FOR USE OF SUPERSEDED OR VOID DATA

DIMENSIONS ARE SUBJECT TO MANUFACTURERS TOLERANCE AND CHANGE WITHOUT NOTICE

REV.	DATE	DESCRIPTION	BY	CKD. BY

WEIGHT POUNDS	VOLUME CUBIC FEET

FIGURE NUMBER
9807-BS



WARNING: Cancer and Reproductive Harm - www.P65Warnings.ca.gov