

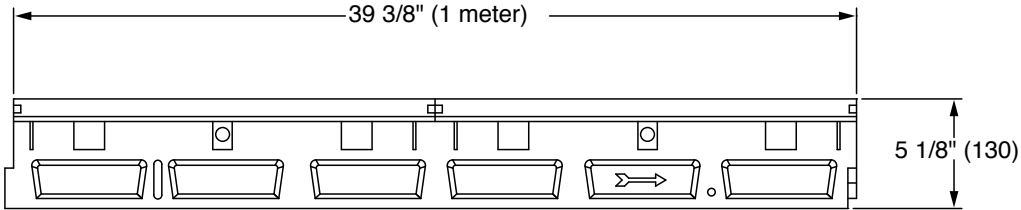
SMITH® JAY R. SMITH MFG. CO.®
 MEMBER OF MORRIS GROUP INTERNATIONAL
 POST OFFICE BOX 3237
 MONTGOMERY, ALABAMA 36109-0237 (USA)
 TEL: 334-277-8520 FAX: 334-272-7396 www.jrsmith.com



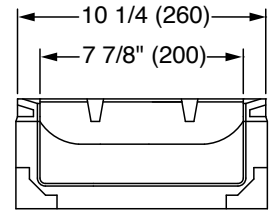
LOCATION

10" WIDE 9806 POWERDRAIN® SHALLOW DRAIN SYSTEM w/INTEGRAL DUCTILE IRON EDGE RAIL

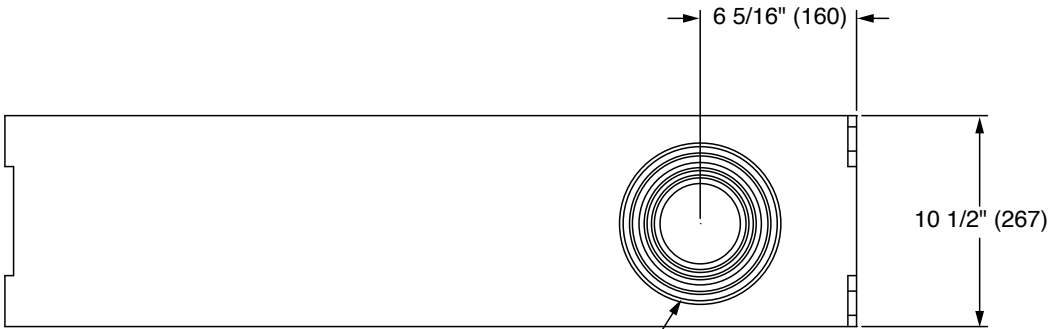
FUNCTION: Used in all surface drainage applications. Shallow non-sloping channels may be assembled in any length utilizing integral ductile iron rails that allow for extra heavy duty hard wheel traffic applications.



SIDE VIEW



END VIEW



BOTTOM VIEW

4" (102) and 6" (152) Sch 40 Knockout/Drillout

REGULARLY FURNISHED: 1 meter (3.28') Precast Polyester Concrete Channel of Interlocking Design with No Slope. Channel has an Integral Ductile Iron Edge Rail and 8" Internal Width. Supplied with Secured Ductile Iron Grates.

VARIATIONS:

- Grate Specifications (See Reverse Side)
- End Cap
- Grate Removal Tool

Note: This Trench Drain System is designed for "On Grade Applications Only" as There are No Provisions for a Flashing Flange or Flashing Clamp



DRAWING NUMBER
S9806

SIZE
A

SCALE:
NONE

DATE:
4-2-15

APPROVED BY:
PJ

CHECKED BY:
PJ

DRAWN BY:
TBW

FIGURE NUMBER
9806

WE CAN ASSUME NO RESPONSIBILITY FOR USE OF SUPERSEDED OR VOID DATA

DIMENSIONS ARE SUBJECT TO MANUFACTURERS TOLERANCE AND CHANGE WITHOUT NOTICE

REV.	DATE	DESCRIPTION	BY	CKD. BY	WEIGHT POUNDS	VOLUME CUBIC FEET	FIGURE NUMBER 9806
------	------	-------------	----	---------	---------------	-------------------	------------------------------

SMITH® JAY R. SMITH MFG. CO.®
 MEMBER OF MORRIS GROUP INTERNATIONAL
 POST OFFICE BOX 3237
 MONTGOMERY, ALABAMA 36109-0237 (USA)
 TEL: 334-277-8520 FAX: 334-272-7396 www.jrsmith.com



LOCATION

10" WIDE 9806 POWERDRAIN® SHALLOW DRAIN SYSTEM w/INTEGRAL DUCTILE IRON EDGE RAIL

DRAWING NUMBER
S9806BS

SIZE
A

SCALE:
NONE

DATE:
4-2-15

APPROVED BY:
PJ

CHECKED BY:
PJ

DRAWN BY:
TBW

9806BS

FIGURE NUMBER

WE CAN ASSUME NO RESPONSIBILITY FOR USE OF SUPERSEDED OR VOID DATA

DIMENSIONS ARE SUBJECT TO MANUFACTURERS TOLERANCE AND CHANGE WITHOUT NOTICE

**Extra Heavy Duty, DIN 19580/EN 1433 Load Class E:
135,000 lbs - 2323 psi. For commercial solid tire
forklift traffic patterns, forklifts and impacts from
steel struts and metal wheels.**

* **Powerlok ADA** - 3/4 (19) x 5/16 (8) longitudinal
ductile iron slotted grate (56.00 sq in.)

**Extra Heavy Duty, DIN 19580/EN 1433 Load Class F:
202,320 lbs - 4182 psi. For aircraft runways,
docks, heavy fork trucks, and heavy wheel loads.**

* **Powerlok Slotted** - 4 1/2 (114) x 11/16 (18) ductile
iron slotted grate (126.00 sq. in.)

*Available With Powerlok Locking Devices Only

DEEP END DEPTHS 9806 SYSTEM

Channel Number	Invert Depth		Slope	Slotted Weight Lbs.	ADA Weight Lbs.
	Inch	mm			
9806	4.00	100	0.0%	186.2	198.4

Note: For overall depth of channel add 1.20" to invert depth shown.



REV.	DATE	DESCRIPTION	BY	CKD. BY	WEIGHT POUNDS	VOLUME CUBIC FEET	FIGURE NUMBER 9806BS
------	------	-------------	----	---------	---------------	-------------------	--------------------------------