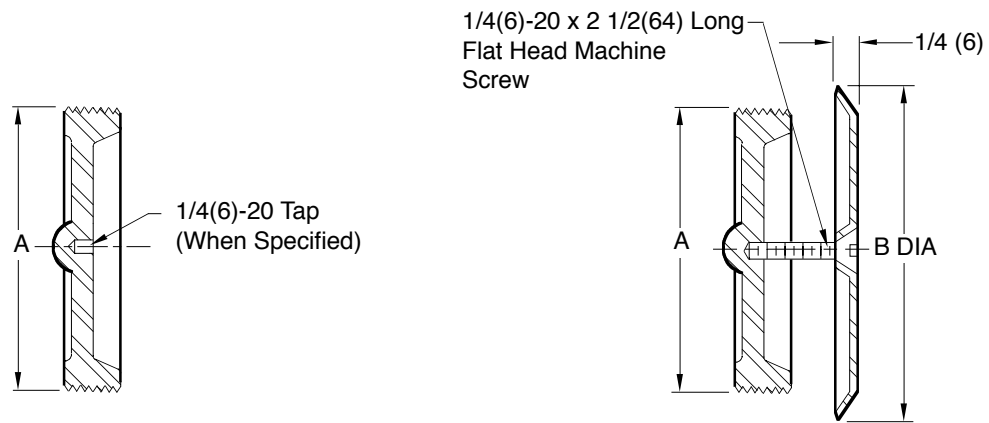


CLEANOUTS

STAINLESS STEEL - CARBON STEEL

WALL CLEANOUTS

FUNCTION: Used in female NPT openings in drainage piping where a cleanout is required. Face-of-wall cover is desirable on finished walls.



A (Pipe Size) = 03(75) or 04(100)

Fig. 9775T THREADED PLUG

Fig. 9776T THREADED PLUG w/COVER

A SIZE	B DIA
03(75)	5 1/2(140)
04(100)	7 1/4(185)

REGULARLY FURNISHED:
 CF8 (Equivalent to Type 304)
 Rough Finish Stainless Steel Plug. Screw with Polished Stainless Steel Cover Plate as Indicated by Figure number.

- VARIATIONS:**
- Longer Center Screw (Specify Length) -LS
 - "T" Handle Plug -TP Plug Tapped 1/4"(6)-20 Thread
 - Vandal Proof Screw -U

- OPTIONAL MATERIALS:**
- A-27 Carbon Steel Plug -A27
 - CF8M (Equivalent to Type 316) Stainless Steel Plug -316

NOTE: Dimensions shown in parentheses are in millimeters.

DRAWING NUMBER: **S9775**
 SIZE: **A**
 SCALE: **NONE**
 DATE: **11-12-84**
 APPROVED BY: **T.D.**
 CHECKED BY: **VG**
 DRAWN BY: **PJ**
9775, 9776
 DIMENSIONS ARE SUBJECT TO MANUFACTURERS TOLERANCE AND CHANGE WITHOUT NOTICE

WE CAN ASSUME NO RESPONSIBILITY FOR USE OF SUPERSEDED OR VOID DATA

REV.	DATE	DESCRIPTION	BY	CKD. BY	WEIGHT POUNDS	VOLUME CUBIC FEET	FIGURE NUMBER 9775, 9776
		05/31/00 1-14-95 9-01-94	JJ EMB CMB	BS BS BS			
		Changed Metric Equivalents Added Millimeters Submittal Update					