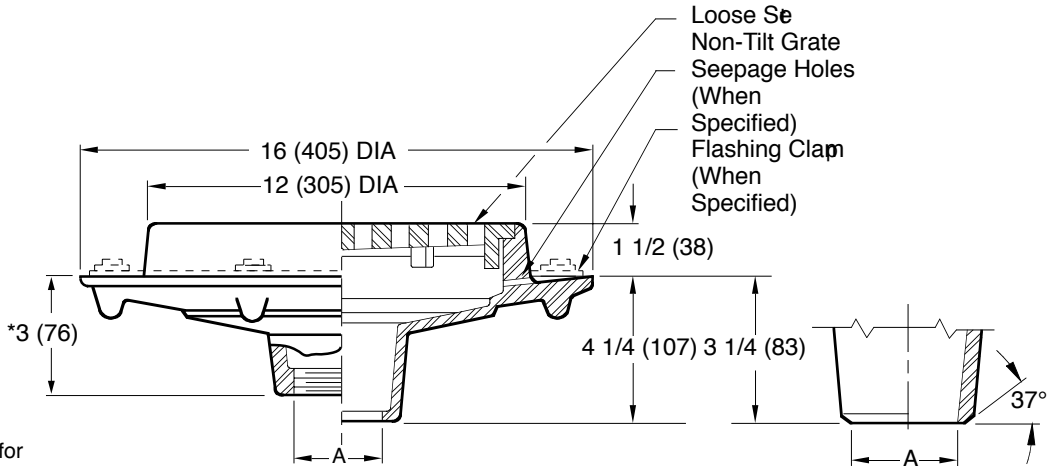


## FLOOR DRAINS STAINLESS STEEL - CARBON STEEL

### 12" (305) ROUND HEAVY DUTY TOP

**FUNCTION:** Used in areas where waste water contains no sediment or debris and construction requires a shallow body.

Free Area  
27.63 SQ IN  
(178) SQ CM



\*3 1/2 (89) for  
6 (150) outlet.  
4 (102) for  
NO-HUB OUTLETS.

A (Pipe Size) = 04(100) or 06(150)

**Butt Weld Outlet**

Schedule 40 Regularly Furnished

- Fig. 9730C . . . CAULK OUTLET
- Fig. 9730T . . . .THREADED OUTLET
- Fig. 9730Y . . . .NO-HUB OUTLET

**REGULARLY FURNISHED:**

CF8 (Equivalent to Type 304) Rough Finish Stainless Steel Body and Loose Set Non-Tilt Grate.

**VARIATIONS:**

- 4(100) or 6"(150) Dia. Funnel (Specify Fig. 9703)
- 8 3/4(220) x 3 3/4"(95) Funnel (Specify Fig. 9704)
- Closure Plug and Gasket Available in Stainless Steel -XPSS or Plastic -XPP
- Closure Plug with 3/4"(19) Test Plug (Specify Material)
- Flashing Clamp with Seepage Holes -C
- Satin Finish Top -S
- Seepage Holes -WSH
- Vandal Proof Grate -U
- 90° Side Outlet (Specify Fig. 9759)
- BW Butt Weld Outlet (Specify Schedule -S05, -S10 or -S40)

**OPTIONAL MATERIALS:**

- A-27 Carbon Steel -A27
- Cast Iron Grate -CIG
- CF8M (Equivalent to Type 316) Stainless Steel -316
- Nickel Bronze Grate -NB
- Polished Bronze Grate -PB

**Design Pressures and Temperatures**

1. With proper outlet connection, shall be watertight up to 10 ft. of water column (4.34 psig).
2. When exposed to effluent appropriate for drain material, the drain shall withstand effluent temperatures of 180 degrees F at ambient pressure.

**NOTE:** Dimensions shown in parentheses are in millimeters.

DRAWING NUMBER S9730  
SIZE A  
SCALE: NONE  
DATE: 11-12-84  
APPROVED BY: TD  
CHECKED BY: VGD  
DRAWN BY: PJ  
**9730**  
FIGURE NUMBER

WE CAN ASSUME NO RESPONSIBILITY FOR USE OF SUPERSEDED OR VOID DATA  
DIMENSIONS ARE SUBJECT TO MANUFACTURERS TOLERANCE AND CHANGE WITHOUT NOTICE

REV.	DATE	DESCRIPTION	BY	CKD. BY	WEIGHT POUNDS	VOLUME CUBIC FEET	<b>FIGURE NUMBER</b>  <b>9730</b>