

L
 DRAWING NUMBER **S9700**
 SIZE **A**
 SCALE: **NONE**
 DATE: **11-12-84**
 APPROVED BY: **TD**
 CHECKED BY: **VGD**
 DRAWN BY: **PJ**
9700
 FIGURE NUMBER

WE CAN ASSUME NO RESPONSIBILITY FOR USE OF SUPERSEDED OR VOID DATA

DIMENSIONS ARE SUBJECT TO MANUFACTURERS TOLERANCE AND CHANGE WITHOUT NOTICE

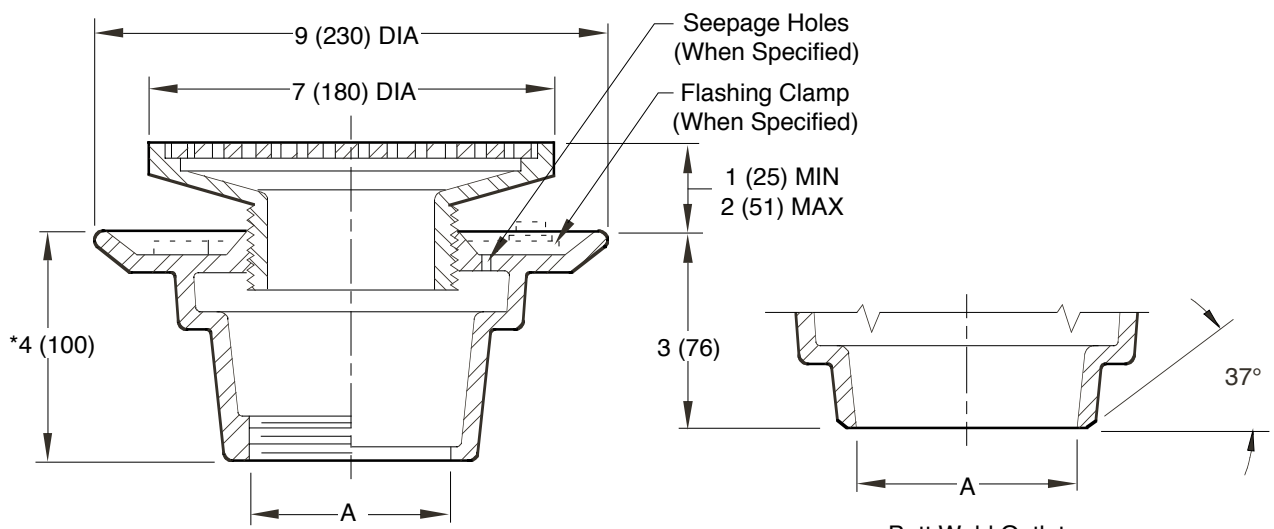
FLOOR DRAINS

STAINLESS STEEL - CARBON STEEL

ADJUSTABLE STRAINER HEAD

FUNCTION: General service floor drain for use in finished areas where a corrosion resistant drain is required.

Free Area
 12.50 SQ IN
 (81) SQ CM



*Dimension becomes 3 3/8" (86) for NO-HUB Outlet

A (Pipe Size) = 02(50), 03(75) or 04(100)

Butt Weld Outlet
 Schedule 40 Regularly Furnished

- Fig. 9700BW BUTTWELD OUTLET (Specify Sch -S05, -S10 or -S40)
- Fig. 9700C CAULK OUTLET
- Fig. 9700T THREADED OUTLET
- Fig. 9700Y NO-HUB OUTLET

Design Pressures and Temperatures

1. With proper outlet connection, shall be watertight up to 10 ft. of water column (4.34 psig).
2. When exposed to effluent appropriate for drain material, the drain shall withstand effluent temperatures of 180 degrees F at ambient pressure.

REGULARLY FURNISHED:

CF8 (Equivalent to Type 304)
 Rough Finish Stainless Steel
 Body and Round Adjustable
 Strainer Head with Satin
 Finished Top.

VARIATIONS:

- Flashing Clamp with Seepage Holes -C
- Seepage Holes -WSH
- Solid Cover -SC
- Vandal Proof Grate -U
- 4(100) or 6"(150) Dia. Funnel (Specify Fig. 9703)
- 8 3/4(220) x 3 3/4"(95) Funnel (Specify Fig. 9704)
- 90° Outlet (Specify Fig. 9759)
- 1/2"(13) Trap Primer Connection -P050

OPTIONAL MATERIALS:

- A-27 Carbon Steel -A27
- CF8M (Equivalent To Type 316) Stainless Steel -316
- Nickel Bronze Strainer -NB

NOTE: Dimensions shown in parentheses are in millimeters.

L K J H	8-18-15 10-17-11 9-19-11 4-28-06	Rev. Text, Var., Added Note Added Note Revised Function, Text Revised Variations	TBW TBW TBW RN	CL CL CL CL	WEIGHT POUNDS	VOLUME CUBIC FEET	FIGURE NUMBER 9700
REV.	DATE	DESCRIPTION	BY	CKD. BY			