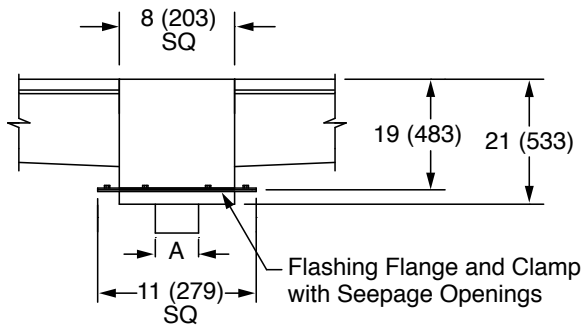
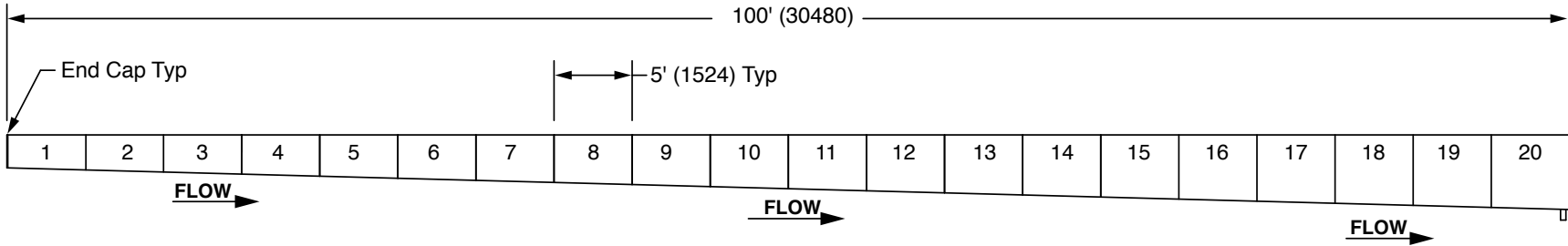


FIGURE NUMBER	9671	DRAWN BY: TBW	CHECKED BY: PJ	APPROVED BY: PJ	DATE: 4-1-15	SCALE: NONE	SIZE A	DRAWING NUMBER s9671	A
---------------	-------------	------------------	-------------------	--------------------	-----------------	----------------	-----------	-------------------------	---

DIMENSIONS ARE SUBJECT TO MANUFACTURER'S TOLERANCE AND CHANGE WITHOUT NOTICE.

WE CAN ASSUME NO RESPONSIBILITY FOR USE OF SUPERSEDED OR VOID DATA.

SPECIAL SLOT TYPE TRENCH DRAIN



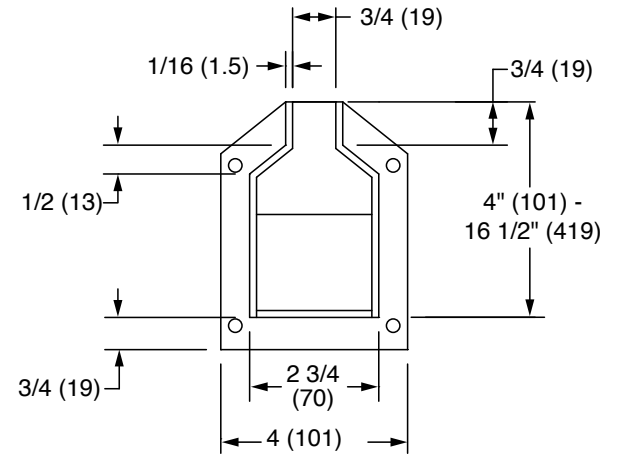
A(Pipe Size)= 02 (51), 03 (76), or 04 (101)

Catch Basin Detail

9671Y.....NO-HUB OUTLET

Note: 3" (76) and 4" (101) outlets only available with catch basin option.

Note: 2" (51) outlet only may be placed on bottom of any channel if catch basin is not desired.



Typical Section

Note: Trench to have maximum of 1/8 (3) inch per foot sloped bottom.

Note: Dimensions in parentheses are in millimeters

REGULARLY FURNISHED:

Trench Drain in 5' (1524) Long Modular Sections
16 Ga. Type 304 Stainless Steel Fabricated with
3/4" (19) wide slot and 2 5/8" (67) wide throat with
1% slope. Channels available with inverts ranging
from 4" (101) to 16 1/2" (419). Catch Basin with
Loose Set Solid Cover and Sediment Bucket.

OPTIONS:

- Closed End Cap -EC
- 2" Outlet Cap -H02
- 2" No Hub Bottom Outlet -Y02
- Catch Basin -CB
- Secured Cover on Catch Basin -U
- Dome Bottom Strainer

SMITH® JAY R. SMITH MFG. CO.®
MEMBER OF MORRIS GROUP INTERNATIONAL
POST OFFICE BOX 3237
MONTGOMERY, ALABAMA 36109-0237 (USA)
TEL: 334-277-8520 FAX: 888-377-7818 www.jrsmith.com

ASPI MEMBER OF:
ASPE Professional Boiler Technicians

A

1-22-20

Removed Smith/Aco Logo

KK

CJ



WARNING: Cancer and Reproductive Harm - www.P65Warnings.ca.gov