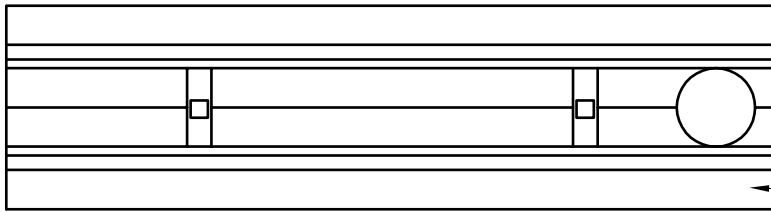


# STAINLESS STEEL TRENCH DRAIN

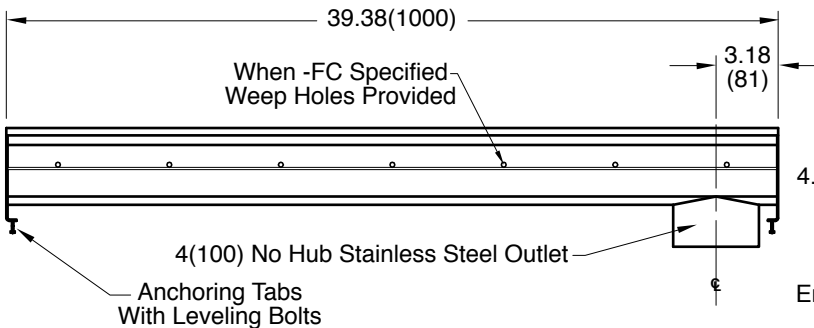
## 6" WIDE MODULAR SHALLOW STAINLESS STEEL TRENCH DRAIN SYSTEM

**ENGINEERING SPECIFICATION:** Jay R. Smith stainless steel trench drain channels shall be 39.38" long, 6.38" wide, and have a 4" wide throat with bolting end plates. The modular channel sections shall be made of 16-gauge type 304 stainless steel. Channels shall be non-sloping. Channels shall be available with invert of 3.18" Regularly furnished with secured light duty 9660-450-SS slotted stainless steel grate and 4" no-hub vertical outlet. Trench drain shall be Jay R. Smith figure number 9665 series.

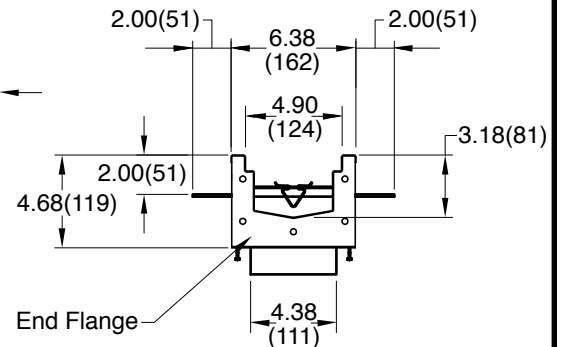


**Top View of Channel**

Anchor Flange or Flashing Flange/Clamp (When Specified)



**Side View of Channel**



**End View of Channel**

NOTE: Dimensions shown in parentheses are in millimeters.

**REGULARLY FURNISHED:**

Fabricated 16 gauge type 304 stainless steel trench drain system with non sloping modular trench drain body sections (body depth = 3.18(81) and overall flange depth = 4.68(119) with bolting end plates and 4" no hub bottom outlet at male end. Supplied with secured stainless steel 9660-450-SS slotted grate.

**VARIATIONS:**

- Buttweld Outlet -BW
- For Grating Options See Backsheet
- 4" Center Bottom Outlet
- Flashing Flange and Collar -FC
- End Cap -EC
- Anchor Flange -F
- Channel Less Outlet -LO

**OPTIONAL MATERIALS:**

- Type 316 Stainless Steel -316SS Trench Body Only

DRAWING NUMBER  
s9665

SIZE  
A

SCALE:  
NONE

DATE:  
12-14-10

APPROVED BY:  
MD

CHECKED BY:  
MD

DRAWN BY:  
MD

9665

DIMENSIONS ARE SUBJECT TO MANUFACTURERS TOLERANCE AND CHANGE WITHOUT NOTICE WE CAN ASSUME NO RESPONSIBILITY FOR USE OF SUPERSEDED OR VOID DATA

REV.	DATE	DESCRIPTION	BY	CKD. BY	WEIGHT POUNDS	VOLUME CUBIC FEET	FIGURE NUMBER
B A	7-6-21 1-14-11	9660 was 9870 Revised Text added "Shallow"	KK RN	PJ MD			<b>9665</b>

## SHALLOW STAINLESS STEEL TRENCH DRAIN - AVAILABLE GRATING

<b>DRAWING NUMBER</b>	<b>s9665</b>	<b>SCALE:</b>	<b>NONE</b>	<b>DATE:</b>	<b>12-14-10</b>	<b>APPROVED BY:</b>	<b>MD</b>	<b>CHECKED BY:</b>	<b>MD</b>	<b>DRAWN BY:</b>	<b>MD</b>	<b>SIZE</b>	<b>A</b>
WE CAN ASSUME NO RESPONSIBILITY FOR USE OF SUPERSEDED OR VOID DATA													
DIMENSIONS ARE SUBJECT TO MANUFACTURERS TOLERANCE AND CHANGE WITHOUT NOTICE													

**Grating Options:**

Light Duty-DIN 19580 Load Class A-3500 lbs-70 psi.  
 Pedestrian, Bicycle, and Wheelchair Traffic

- 9660-447-SSADA ADA Stainless Steel
- 9660-450-SS Slotted Stainless Steel
- 9660-451-SSPA Perforated Stainless Steel

Heavy Duty-DIN 19580 Load Class C-56,00 lbs-1, 162 psi.  
 Commercial Pneumatic Tire Traffic Patterns, Pneumatic  
 Tire Forklifts and Pneumatic Tire Tractor Trailers

- 9660-430-SSM ADA Stainless Steel Mesh
- 9660-455-SSHD Slotted Stainless Steel
- 9660-465-SSP Perforated Stainless Steel
- 9660-466-SBG Stainless Steel Bar Grate
- 9660-466-SBG-316 Stainless Steel Bar Grate (Type 316SS)

Extra Heavy Duty-DIN 19580 Load Class E-135,000  
 lbs-2,788 psi. Commercial Solid Tire Traffic Patterns,  
 Forklifts and Metal Wheels

- 9660-490-SSHDE Slotted Stainless Steel

**NOTE:** All Grates Are Type 304 Stainless Steel Except for the - SBG Grate that has option FM 316 SS.

<b>FIGURE NUMBER</b>	<b>9665BS</b>	<b>REV.</b>	<b>DATE</b>	<b>DESCRIPTION</b>	<b>BY</b>	<b>CKD. BY</b>	<b>WEIGHT POUNDS</b>	<b>VOLUME CUBIC FEET</b>	<b>FIGURE NUMBER</b>
									<b>9665BS</b>