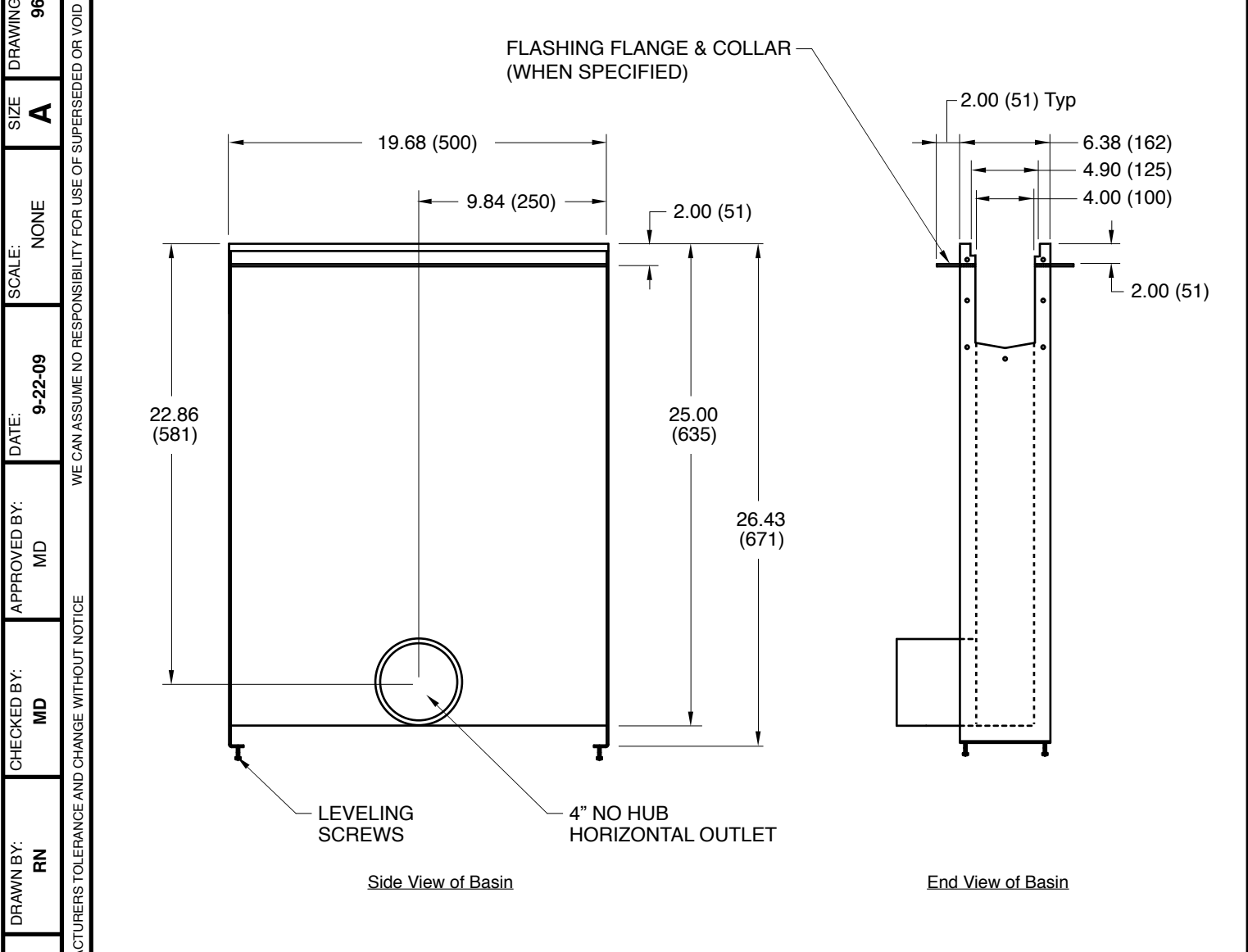


STAINLESS STEEL TRENCH DRAIN

6" WIDE MODULAR STAINLESS STEEL CATCH BASIN



REGULARLY FURNISHED:
 Fabricated 16 gauge type 304 stainless steel catch basin with bolting end plates, 4" NO-HUB side outlet, supplied with secured stainless steel 9660-450-SS slotted grate. Basin is made to fit channel #15 only.

VARIATIONS:





- BW Butt weld Outlet
- For Grating Options See Back sheet
- Flashing Flange and Collar -FC
- End Cap -EC
- Stainless Steel Bucket -BSS

OPTIONAL MATERIALS:

- Type 316 Stainless Steel -316SS

Note: Dimensions shown in parentheses are in millimeters.

FIGURE NUMBER	A	7-6-21	9660 was 9870	KK	PJ	WEIGHT POUNDS	VOLUME CUBIC FEET	FIGURE NUMBER
9660-CB	REV.	DATE	DESCRIPTION	BY	CKD. BY	82.0		9660-CB

B	 JAY R. SMITH MFG. CO.® MEMBER OF MORRIS GROUP INTERNATIONAL POST OFFICE BOX 3237 MONTGOMERY, ALABAMA 36109-0237 (USA) TEL: 334-277-8520 FAX: 888-377-7818 www.jrsmith.com	  	LOCATION
----------	--	--	-----------------

STAINLESS STEEL TRENCH DRAIN

DRAWING NUMBER 9660-CB-BS	SIZE A	SCALE: NONE	DATE: 9-22-09	APPROVED BY: MD	CHECKED BY: MD	DRAWN BY: RN				
WE CAN ASSUME NO RESPONSIBILITY FOR USE OF SUPERSEDED OR VOID DATA							DIMENSIONS ARE SUBJECT TO MANUFACTURERS TOLERANCE AND CHANGE WITHOUT NOTICE			
<p>Grating Options:</p> <p>Light Duty-DIN 19580/EN 1433 Load Class A-3500 lbs-70 psi. Pedestrian, Bicycle, and Wheelchair Traffic</p> <ul style="list-style-type: none"> <input type="checkbox"/> 9660-445-SSADA ADA Stainless Steel <input type="checkbox"/> 9660-450-SS Slotted Stainless Steel <input type="checkbox"/> 9660-451-SSPA Perforated Stainless Steel <p>Heavy Duty-DIN 19580/EN 1433 Load Class C-56,000 lbs-1,162 psi. Commercial Pneumatic Tire Traffic Patterns, Forklifts and Tractor Trailers</p> <ul style="list-style-type: none"> <input type="checkbox"/> 9660-430-SSM Stainless Steel Mesh <input type="checkbox"/> 9660-455-SSHD Slotted Stainless Steel <input type="checkbox"/> 9660-465-SSP Perforated Stainless Steel <input type="checkbox"/> 9660-466-SBG-ASNG Stainless Steel Bar Grate w/Anti-Slip Notches <input type="checkbox"/> 9660-466-SBG-316-ASNG Stainless Steel Bar Grate (Type 316SS) w/Anti-Slip Notches <p>Extra Heavy Duty-DIN 19580/EN 1433 Load Class E-135,000 lbs -2,788 psi. Commercial Solid Tire Traffic Patterns, Forklifts and Impacts From Steel Struts or Metal Wheels</p> <ul style="list-style-type: none"> <input type="checkbox"/> 9660-490-SSHDE Slotted Stainless Steel <p style="text-align: center; margin-top: 20px;">NOTE: All Grates Are Type 304 Stainless Steel Except for the - SBG Grate that has option FM 316 SS.</p>										

B	7-6-21	9660 was 9870	KK	PJ	WEIGHT POUNDS	VOLUME CUBIC FEET	FIGURE NUMBER
A	1-26-18	Revised Description	TBW	PJ			9660-CB-BS
REV.	DATE	DESCRIPTION	BY	CKD. BY			