



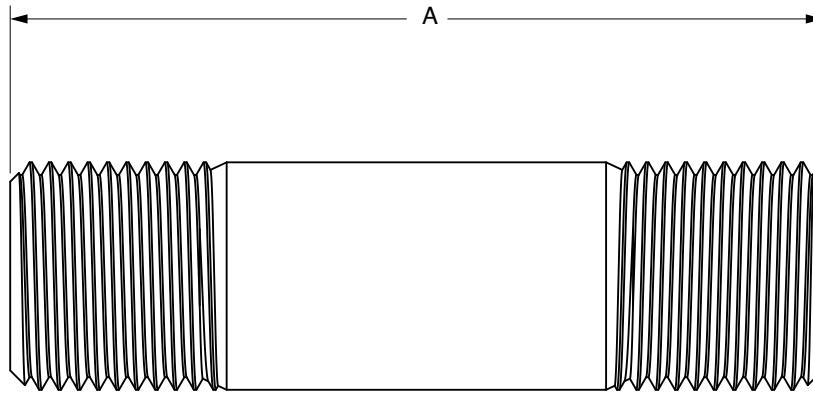
SMITH
FLUID
CONTROLS®

JAY R. SMITH MFG. CO.®
MEMBER OF MORRIS GROUP INTERNATIONAL
POST OFFICE BOX 3237
MONTGOMERY, ALABAMA 36109-0237 (USA)
TEL: 334-277-8520 FAX: 888-377-7818 www.jrsmith.com

LOCATION

DIELECTRIC NIPPLES

Product Description: 950 Dielectric fittings protect your plumbing system through an exclusive steel-to-plastic design that establishes an effective dielectric waterway. The 950 Dielectric fittings separates dissimilar metals in the electrolyte (waterway) eliminating the local galvanic cell. In addition, 950 Dielectric fittings metal-to-metal joint design maintains external electrical continuity, thereby preventing stray current corrosion. This feature becomes critical when stray current is present due to intentional or non-intentional grounding of direct current (DC) sources, e.g. phone systems and appliances. 950 Dielectric fittings are designed to meet the requirements of ASTM standard F-1545 for continuous use at temperatures up to +225°F (- +5°F) and for pressures up to 300 psi, and will achieve a dielectric waterway in all potable water and appropriate HVAC applications.



1/2 NPT Pipe Size, 14 Threads Per Inch
.053" Thread Engagement

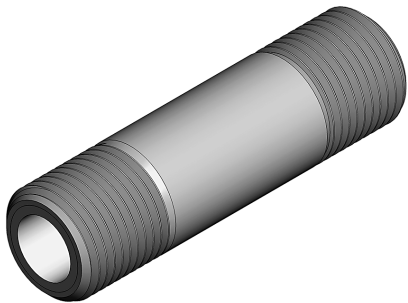


FIG. NO.	OUTLETS	A-LENGTH
950-T050	Thread X Thread 1/2"	3"(75)
950-T075	Thread X Thread 3/4"	3"(75)
950-T1	Thread X Thread 1"	4"(100)
950-T125	Thread X Thread 1 1/4"	4"(100)
950-T150	Thread X Thread 1 1/2"	4"(100)
950-T2	Thread X Thread 2"	4"(100)
950-T250	Thread X Thread 2 1/2"	6"(152)
950-T3	Thread X Thread 3"	6"(152)
950-T4	Thread X Thread 4"	6"(152)

NOTE: The wetted surface of the product contacted by consumable water contributes less than one percent of lead by weight.

NOTE: Dimensions shown in parentheses are in millimeters.

DRAWING NUMBER: A
 SIZE: A
 SCALE: NONE
 DATE: 1-7-19
 APPROVED BY: JM
 CHECKED BY: JM
 DRAWN BY: TBW
950-TxT SERIES
 FIGURE NUMBER

DIMENSIONS ARE SUBJECT TO MANUFACTURERS TOLERANCE AND CHANGE WITHOUT NOTICE
 WE CAN ASSUME NO RESPONSIBILITY FOR USE OF SUPERSEDED OR VOID DATA

REV.	DATE	DESCRIPTION	BY	CKD. BY	WEIGHT POUNDS	VOLUME CUBIC FEET	FIGURE NUMBER
A	8-20-19	Revised Figure Number	MW	JM			950-TxT SERIES



WARNING: Cancer and Reproductive Harm - www.P65Warnings.ca.gov