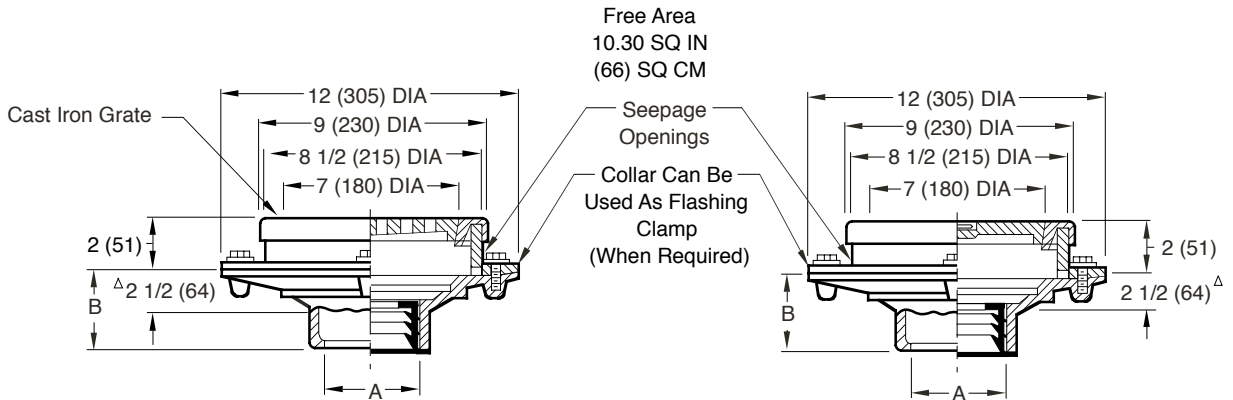


# FLOOR DRAINS

## DECONTAMINATION DRAINS

**FUNCTION:** Used in areas where hazardous or otherwise contaminated waste is present. Consists of two individual drains. Slotted grate drain permits drainage of contaminated waste to a separate storage tank, while the adjacent drain connected to the sewer is covered by a solid ground joint plug, thus preventing contaminated waste from entering the sewer system. Switching the solid cover and grate will allow washed down decontaminated waste to be directed to the sewer without entering the contaminated waste storage tank.

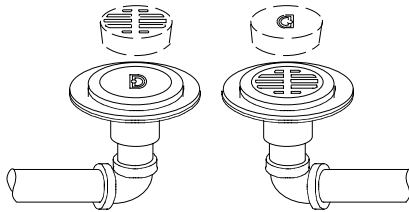


- Fig. 9205C . . . . . CAULK OUTLET
- Fig. 9205Y . . . . . NO-HUB OUTLET

A SIZE	02(50), 03(75) & 04(100)
B	3 3/4 (95) for Caulk, NO-HUB and Speedi-Set. 2 (51) for Threaded

**NOTE:** Dimensions shown in parentheses are in millimeters.

Δ This dimension to Internal Stop of Speedi-Set Gasket



**TYPICAL INSTALLATION**

Drains are located close to each other for ease of switching grate and plug.

**REGULARLY FURNISHED:**  
 Two (2) Duco Cast Iron Bodies with Flashing Collar and Bronze Rim. Cast Iron Grate and Ground Joint Plug.

- VARIATIONS:**
- Engraved in Rims "SANITARY" and "CONTAMINATED"
  - L Speedi-Set Service Weight
  - LXH Speedi-Set Extra Heavy
  - T Threaded Outlet

- OPTIONAL MATERIALS:**
- Acid Resistant Coated -ARC
  - Bronze Grate and Plug -RB
  - Galvanized Cast Iron -G
  - Ductile Iron Grate and Plug -M

DRAWING NUMBER **S9205**  
 SIZE **A**  
 SCALE: **NONE**  
 DATE: **8-12-93**  
 APPROVED BY:  
 CHECKED BY:  
 DRAWN BY: **TWK**  
 FIGURE NUMBER **9205**  
 DIMENSIONS ARE SUBJECT TO MANUFACTURERS TOLERANCE AND CHANGE WITHOUT NOTICE  
 WE CAN ASSUME NO RESPONSIBILITY FOR USE OF SUPERSEDED OR VOID DATA

F E D C	6-19-13 9-16-96 7-10-95 9-13-94	Revised Table, Variations Removed Heavy Duty Tractor Added Millimeters Submittal Update	TBW EMB EMB CMB	CL CL BS BS	WEIGHT POUNDS	VOLUME CUBIC FEET	<b>FIGURE NUMBER</b> <span style="font-size: 2em; font-weight: bold;">9205</span>
REV.	DATE	DESCRIPTION	BY	CKD. BY			