

C

SMITH® JAY R. SMITH MFG. CO.®
 MEMBER OF MORRIS GROUP INTERNATIONAL
 POST OFFICE BOX 3237
 MONTGOMERY, ALABAMA 36109-0237 (USA)
 TEL: 334-277-8520 FAX: 334-272-7396 www.jrsmith.com



LOCATION

HEAVY DUTY PARKING AREA CATCH BASIN

DRAWING NUMBER
8930

SIZE
A

SCALE:
NONE

DATE:
9-25-86

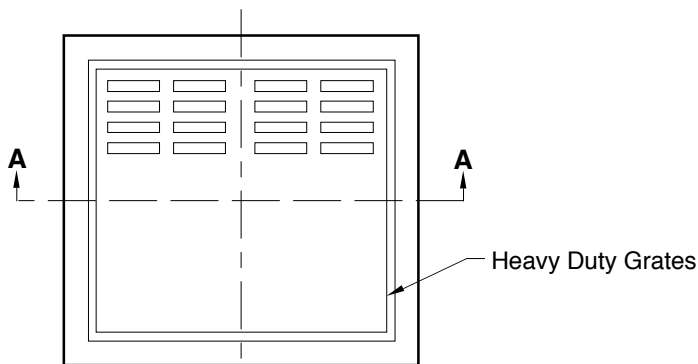
APPROVED BY:
SJM

CHECKED BY:
VGD

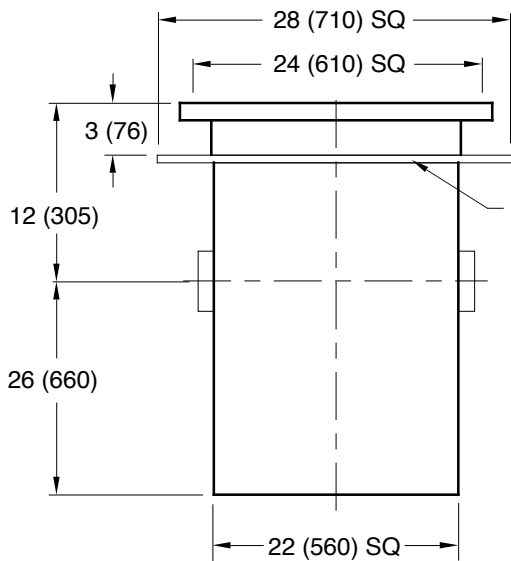
DRAWN BY:
WAS

WE CAN ASSUME NO RESPONSIBILITY FOR USE OF SUPERSEDED OR VOID DATA

DIMENSIONS ARE SUBJECT TO MANUFACTURERS TOLERANCE AND CHANGE WITHOUT NOTICE



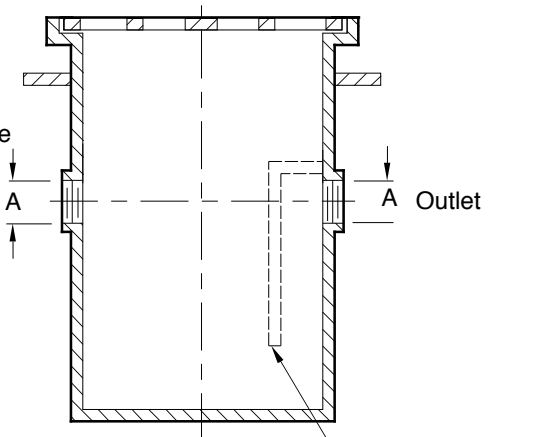
TOP VIEW



FRONT VIEW

Anchor Flange
28 (710) SQ

Inlet



Section "A - A"

Outlet Trap Seal
(When Specified)

A (Pipe Size) = 04" (100)

REGULARLY FURNISHED:
 Fabricated Steel Catch Basin,
 Gray Duco Coated Inside and
 Outside, Threaded Inlet and
 Outlet and Anchor Flange.
 Secured Heavy Duty Cast
 Iron Grates.

- VARIATIONS:**
- Extension -E (Specify Additional Height Required from Centerline of Inlet)
 - NO-HUB Adaptor (2) Required (Specify Fig. 2646Y)
 - Outlet Trap Seal
 - Vandal Proof Screws -U

OPTIONAL MATERIALS:
 Ductile Iron Grates -M

NOTE: Available with larger or smaller inlet and outlet size when specified.

NOTE: Dimensions shown in parentheses are in millimeters.

8930

FIGURE NUMBER

REV.	DATE	DESCRIPTION	BY	CKD. BY
C	8-14-13	Revised Callouts	TBW	CL
B	3-27-02	Regularly Furnished Update	RN	BS
A	3-4-96	Submittal Update	EMB	BS

WEIGHT POUNDS	VOLUME CUBIC FEET

FIGURE NUMBER
8930