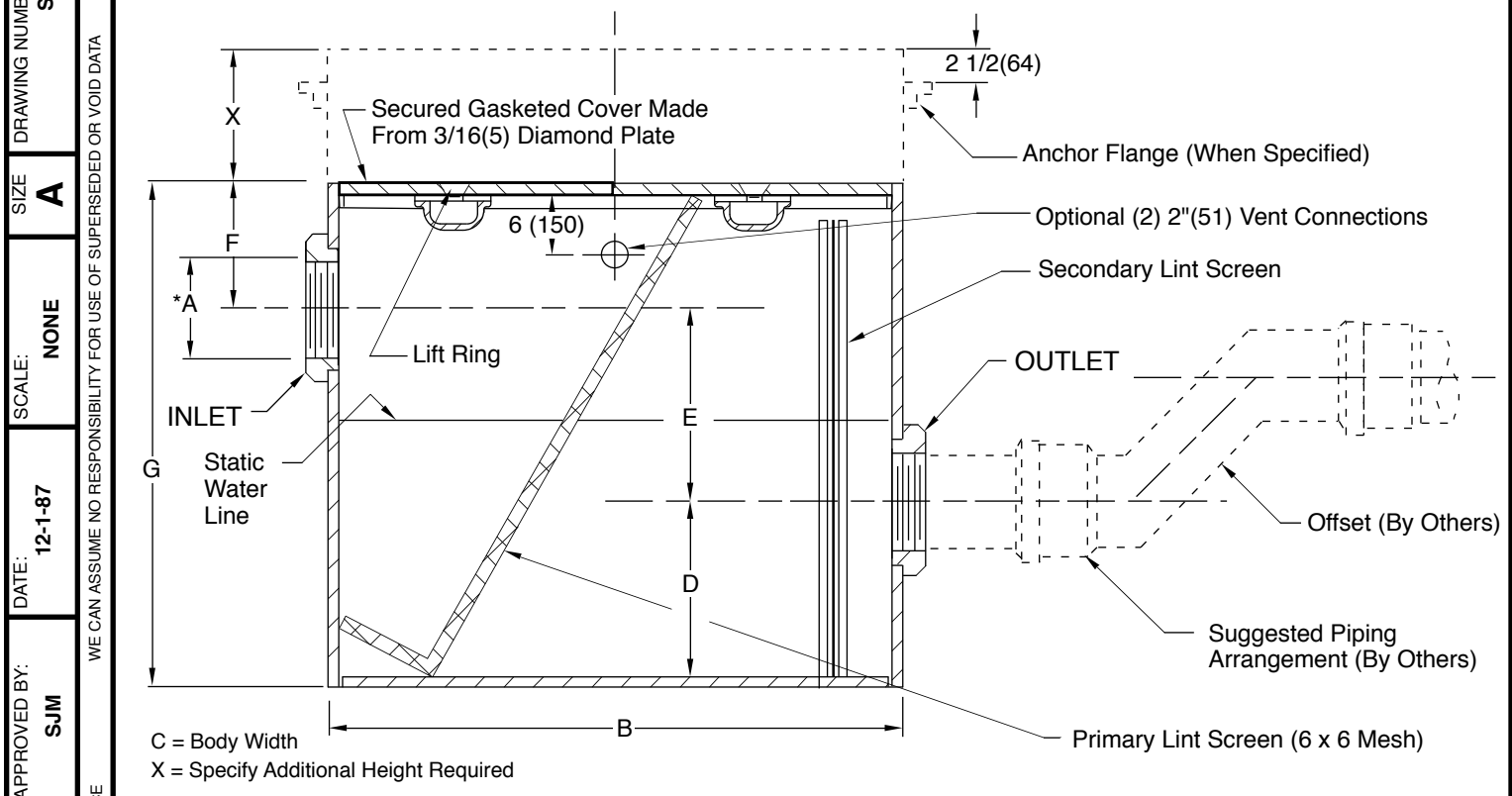


LINT INTERCEPTORS



DRAWING NUMBER: S8910

SIZE: A

SCALE: NONE

DATE: 12-1-87

APPROVED BY: SJM

CHECKED BY: VGD

DRAWN BY: CMB

FIGURE NUMBER: 8910 SERIES

WE CAN ASSUME NO RESPONSIBILITY FOR USE OF SUPERSEDED OR VOID DATA

DIMENSIONS ARE SUBJECT TO MANUFACTURERS TOLERANCE AND CHANGE WITHOUT NOTICE

Fig. No.	GPM Flow Rate	Maximum Number Of Washers	* Inlet & Outlet Size	Dimensions							Securing Screws In Cover
				Body			Roughing Dimensions				
				Length	Width	D	E	F	G		
				A	B	C	D	E	F	G	
8910-20	20	2	04 (100)	30 (760)	24 (610)	12 (305)	12 (305)	8 (205)	32 (813)	8	
8910-25	25	3	04 (100)	36 (915)	24 (610)	12 (305)	12 (305)	8 (205)	32 (813)	8	
8910-50	50	5	04 (100)	40 (1015)	26 (660)	12 (305)	12 (305)	8 (205)	32 (813)	10	
8910-100	100	10	06 (150)	48 (1220)	30 (760)	12 (305)	12 (305)	8 (205)	32 (813)	10	
8910-150	150	15	06 (150)	51 (1295)	32 (815)	24 (610)	12 (305)	8 (205)	44 (1078)	10	
8910-200	200	20	06 (150)	54 (1375)	36 (915)	24 (610)	12 (305)	12 (305)	48 (1220)	10	
8910-350	350	35	06 (150)	68 (1730)	42 (1065)	24 (610)	12 (305)	12 (305)	48 (1220)	14	
8910-500	500	50	06 (150)	84 (2135)	54 (1375)	36 (915)	12 (305)	12 (305)	60 (1524)	18	

*Specify larger or smaller inlets/outlets as required.

REGULARLY FURNISHED:
 Fabricated Steel with Gray Duco Coating and Stainless Steel Primary and Secondary Lint Screens, 3/16"(5) Diamond Plate Cover (Secured & Gasketed) and Threaded Inlet and Outlet.

NOTE: Any unit exceeding 92"(2337mm) in width, 96"(2438mm) in height or weighing more than 3,500 lbs.(1.588 KG.) is an over sized and/or over weight product requiring special shipping and handling considerations. Contact Smith Customer Service as standard FFA terms do not apply,

VARIATIONS:

- All Stainless Steel Unit -SS
- Anchor Flange -F
- Extension -E Specify height eg: -E06 for 6"(150) Ext
- Flashing Flange with Flashing Clamp -F-C
- NO-HUB Inlet & Outlet Connection
- Option (2) 2"(51) Threaded Vent Connections - VC

NOTE: It is the responsibility of the installer to check all parts (internal and external) to verify they are in their proper operating order and location.

NOTE: Dimensions shown in parentheses are in millimeters.

SRQ	9-10-18 2-17-16 10-31-12 2-8-07	Corrected Drawing Added Note Revised Drawing Revised Table	TBW TBW TBW TBW	CL TWK CL TK	WEIGHT POUNDS	VOLUME CUBIC FEET	FIGURE NUMBER 8910 SERIES
REV.	DATE	DESCRIPTION	BY	CKD. BY			