

P
DRAWING NUMBER: S8390
SIZE: A
SCALE: NONE
DATE: 3-5-93
APPROVED BY: McD
CHECKED BY: JD
DRAWN BY: VGD
FIGURE NUMBER: 8390

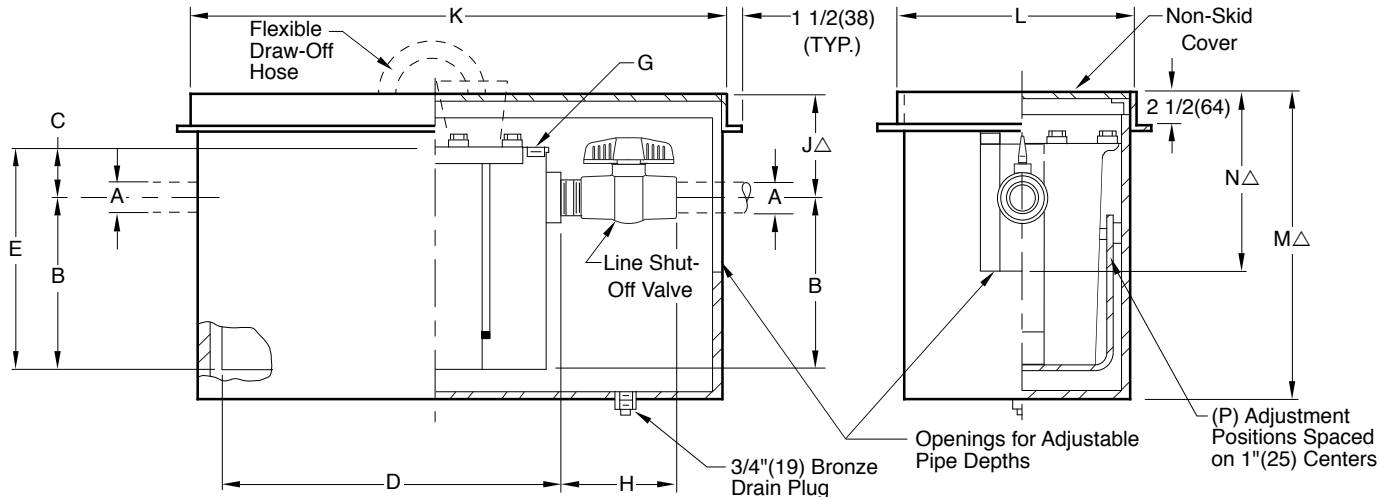
SMITH® JAY R. SMITH MFG. CO.®
MEMBER OF MORRIS GROUP INTERNATIONAL
POST OFFICE BOX 3237
MONTGOMERY, ALABAMA 36109-0237 (USA)
TEL: 334-277-8520 FAX: 334-272-7396 www.jrsmith.com



LOCATION

GREASE INTERCEPTORS WITH RECEIVING CRADLE WITH INTEGRAL DRIP PAN

FUNCTION: The all-steel receiving cradle with integral drip pan provides support for the interceptor and adjustability for the inlet and outlet connections to meet the drainage piping. The receiving cradle can be set in the slab at the time of the pouring or set in a pre-sleeved opening in the rough slab. The receiver is secured and suspended in the rough slab by its anchoring flange. The interceptor body is lowered into the receiving cradle and adjusted to the connecting drainage piping. Interceptor is readily accessible for cleaning and inspection simply by removing the cover which sits flush with the floor. When suspended above a ceiling and a waterproofing membrane is required, specify suffix (-FC) flashing clamp.



NOTE: Whenever an interceptor is to be installed suspended in a floor slab with a cradle or independently, proper support is essential for safety and functional integrity of the installation. Supports/support system shall be of sufficient strength and proper design for the purpose intended and meet the approval of the architect and structural engineer. Jay R. Smith Mfg. Co. is not responsible for the design or recommendation of such supports. Upon request, Jay R. Smith Mfg. Co. will provide the weight of the specific unit. Additional weight must be added to compensate for the weight of the liquid/grease when full and in the flowing mode of operation.

Fig No.	GPM Flow Rate	Grease Cap Lbs.	Inlet and Outlet Size	Dimensions						C.O. PLUG SIZE	Line Shut-off Valve	Cradle Dimensions					
				Roughing Dimensions			Body					J△	K	L	M△	N△	P
				A	B	C	D	E	F								
<input type="checkbox"/> 8390-07	7	14	02 (50)	8 1/2 (215)	3 1/2 (89)	19 (485)	12 (305)	10 3/4 (275)	2 (51)	6 3/4 (175)	8 (205)	19 (485)	34 (865)	17 (430)	28 (710)	19 3/8 (492)	12
<input type="checkbox"/> 8390-10	10	20	02 (50)	9 1/2 (240)	3 3/4 (95)	21 1/4 (540)	13 1/4 (335)	13 (330)	2 (51)	6 3/4 (175)	7 (180)	18 (455)	34 (865)	17 (430)	28 (710)	19 3/8 (492)	12
<input type="checkbox"/> 8390-15	15	30	02 (50)	12 (305)	3 1/2 (89)	25 (635)	15 1/2 (395)	14 (355)	2 (51)	6 3/4 (175)	8 1/2 (215)	20 1/2 (520)	43 1/4 (1100)	24 1/8 (613)	33 1/4 (845)	22 7/8 (581)	13
<input type="checkbox"/> 8390-20	20	40	03 (75)	13 (330)	4 (100)	28 1/2 (725)	17 (430)	15 3/4 (400)	2 (51)	10 (255)	7 1/2 (190)	19 1/2 (495)	43 1/4 (1100)	24 1/8 (613)	33 1/4 (845)	22 7/8 (581)	13
<input type="checkbox"/> 8390-25	25	50	03 (75)	15 1/4 (390)	4 1/2 (115)	30 (760)	19 3/4 (500)	16 3/4 (425)	2 (51)	10 (255)	9 1/2 (240)	21 1/2 (545)	46 1/4 (1175)	26 5/8 (670)	37 1/2 (950)	24 3/8 (619)	13
<input type="checkbox"/> 8390-35	35	70	03 (75)	16 (405)	5 (125)	32 1/2 (825)	21 (535)	18 1/4 (465)	2 (51)	10 (255)	8 3/4 (220)	20 3/4 (525)	46 1/4 (1175)	26 5/8 (676)	37 1/2 (950)	24 3/8 (619)	13
<input type="checkbox"/> 8390-50	50	100	03 (75)	17 1/2 (445)	6 3/4 (170)	35 1/2 (900)	24 1/4 (615)	20 3/4 (525)	2 (51)	10 (255)	10 1/4 (260)	19 1/4 (490)	49 5/8 (1260)	26 (660)	40 1/4 (1022)	24 7/8 (632)	14
<input type="checkbox"/> 8390-75	75	150	04 (100)	21 1/2 (545)	15 1/2 (395)	50 (1270)	37 (940)	30 1/2 (775)	3 (76)	12 3/4 (325)	16 (405)	25 (635)	66 3/4 (1695)	37 (940)	47 1/2 (1205)	30 1/4 (770)	15

△When tile top is specified, add 1"(25). When terrazzo top is specified, add 1 1/4"(32).

REGULARLY FURNISHED:
Fab. Steel Fully-Enclosed Cradle with Integral Drip Pan with Gray Duco Coating Inside and Outside. Interceptor with Steel Cone, Flexible Draw-off Hose and Cap, Line Shut-off Valve and Flow Control Fitting.

- VARIATIONS:**
- NO-HUB Adaptor (2) Required (Specify Fig. 2646Y)
 - △Cradle Cover Recessed for Terrazzo, Ceramic or Quarry Tile -QC
 - △Cradle Cover Recessed for Vinyl or Asphalt Tile -TC
 - Flashing Clamp -FC

- OPTIONAL MATERIALS:**
- Acid Resistant Coating Inside** -ARI
 - Acid Resistant Coating Outside** -ARO▲
 - Acid Resistant Coating Inside and Outside** -ARIO▲
 - Acid Resistant Coated Cradle -ARC
 - Aluminum Cover for Cradle -ACC
 - Aluminum Cover for Interceptor -AC

**Interceptor Only
▲When ARO or ARIO is specified, ARC must also be specified.
NOTE: Dimensions shown in parentheses are in millimeters.

REV.	DATE	DESCRIPTION	BY	CKD. BY	WEIGHT POUNDS	VOLUME CUBIC FEET	FIGURE NUMBER
	5-7-12 01/05/10 9/30/03	Rev. Function, Var., Added Note Added Variations & Note Revised Table	TBW JJ RN	BW CL CL			8390