

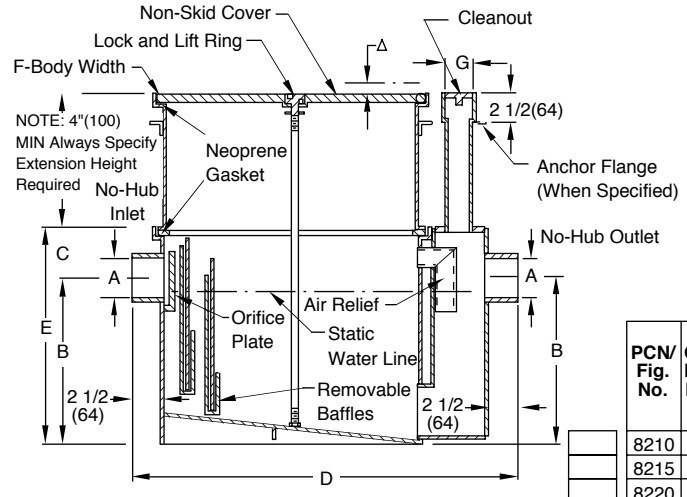
DRAWING NUMBER: **S8200-CAN SERIES**
 SIZE: **A**
 SCALE: **NONE**
 DATE: **4-18-96**
 APPROVED BY:
 CHECKED BY:
 DRAWN BY: **CMD**
8200-CAN SERIES
 FIGURE NUMBER

WE CAN ASSUME NO RESPONSIBILITY FOR USE OF SUPERSEDED OR VOID DATA
 DIMENSIONS ARE SUBJECT TO MANUFACTURERS TOLERANCE AND CHANGE WITHOUT NOTICE

GREASE INTERCEPTORS

GREASE INTERCEPTORS WITH EXTENSION

FUNCTION: Used in kitchens, restaurants, institutions and all types of food processing areas where waste water contains grease, fats and oils which must be intercepted and collected before entering the drainage system. Interceptors with extensions are installed recessed in the floor with cover flush with finished floor. Extension provides additional roughing depth from top of interceptor to center line of inlet and outlet. Extension should not be used as a means for supporting the assembly. The entire interceptor body and extension must rest on solid ground or suitable support hangers.



WHEN ORDERING, SPECIFY HEIGHT REQUIRED FROM TOP OF INTERCEPTOR TO TOP OF EXTENSION USING SUFFIX NUMBER FOR EXTENSION HEIGHT.
 EXAMPLE: FIG. 8225 WITH 6"(150) EXTENSION -SPECIFY FIG. 8225 (-E06)

PCN/ Fig. No.	GPM Flow Rate	Grease Cap Lbs.	Inlet and Outlet Size	Dimensions						C.O. Plug Size
				Roughing Dimensions				Body		
				A*	B	C	D	E	F	
8210	10	20	02(50)	9 1/2(240)	3 3/4(95)	21 1/4(540)	13 1/4(335)	13(330)	2(51)	
8215	15	30	02(50)	12(305)	3 1/2(89)	25(635)	15 1/2(395)	14(355)	2(51)	
8220	20	40	03(80)	13(330)	4(100)	28 1/2(725)	17(430)	15 3/4(400)	2(51)	
8225	25	50	03(80)	15 1/4(390)	4 1/2(115)	30(760)	19 3/4(500)	16 3/4(425)	2(51)	
8235	35	70	04(100)	16(405)	5(125)	32 1/2(825)	21(535)	18 1/4(465)	2(51)	
8250	50	100	04(100)	17 1/2(445)	6 3/4(170)	35 1/2(900)	24 1/4(615)	20 3/4(525)	2(51)	

*Available with larger inlet and outlet when specified.

REGULARLY FURNISHED:

Steel Interceptor and Extension with Gray Duco Coating Inside and Outside and Internal Flow Control Orifice Plate.

VARIATIONS:

- Anchor Flange -F
- Δ Cover Recessed for Terrazzo Ceramic or Quarry Tile -QC
- Δ Cover Recessed for Vinyl or Asphalt Tile -TC
- Flange and Flashing Clamp -F-C
- Lift Out Sediment Bucket -B
- NO-HUB Adaptor (2) Req'd (Specify Fig. 2646Y)

OPTIONAL MATERIALS:

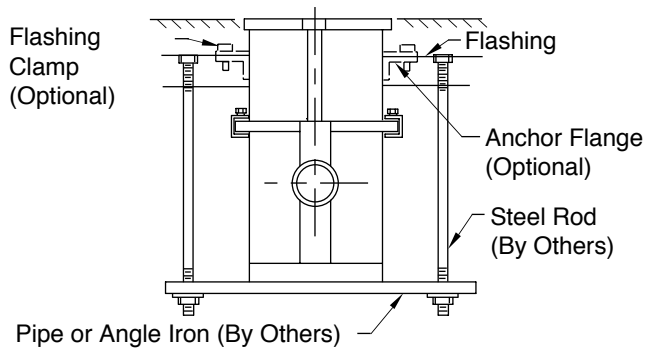
- Acid Resistant Coating Inside -ARI and/or Outside -ARIO
- Aluminum Cover -AC

ΔNOTE: When tile top is specified, add 1"(25). When Terrazzo top is specified, add 1 1/4"(32).

NOTE: 2"(51) must be added to dimension D and F for clearance of extension clamps.

NOTE: Dimensions shown in parentheses are in millimeters.

NOTE: It is the responsibility of the installer to check all parts (internal and external) to verify they are in their proper operating order and location.



INSTALLATION NOTE

The Steel Extension supplied with the 8200 Series Interceptor is designed to increase the roughing dimension from the Inlet-Outlet centerline to the finished floor. The Extension and Anchoring Flange should not be used to support the unit. When installed in ground floor locations, the Interceptor must rest on solid ground or on some suitable concrete pad. If the 8200 Series Interceptor is installed in an upper floor (suspended in the ceiling below), a suitable method of supporting the entire unit must be provided. The installation sketch shows a typical Interceptor with Extension and a recommended method of supporting the entire weight. Also shown are the "When Specified" options of a Anchor Flange and Flashing Clamp.

REV.	DATE	DESCRIPTION	BY	CKD. BY	WEIGHT POUNDS	VOLUME CUBIC FEET	FIGURE NUMBER 8200-CAN SERIES
A	5-30-96	Chg'd Table	EMB				