

INTERCEPTORS

802 Series

TAG _____

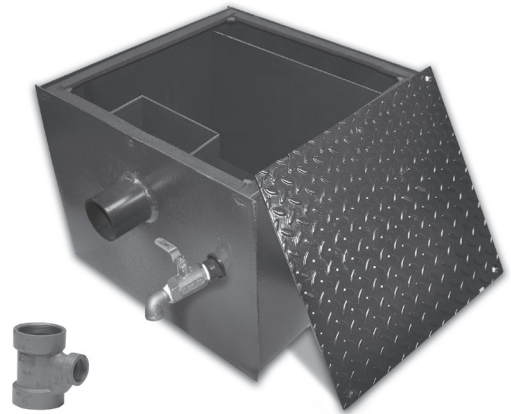
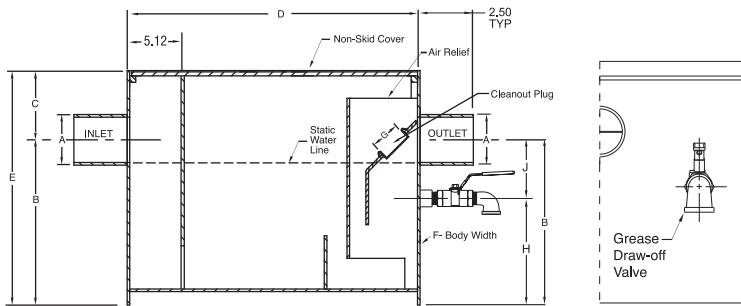
Grease Interceptors with Semi-Automatic Draw-Off, Series 802 - 803

Product Description: Recommended for retaining, then removing fat, oil, and grease from wastewater in kitchen and restaurant areas where food is prepared. The semi-automatic draw-off grease interceptor is constructed of coated fabricated steel with no-hub connections and separate flow control; a non-removable baffle; diamond plate, non-skid cover; draw-off pipe and valve.

The semi-automatic draw-off feature permits grease removal without removing the cover.

Features and Benefits:

- Slip-resistant diamond plate cover
- Designed to be installed in above-the-floor installations or recessed where space is limited
- Constructed of fabricated steel.
- Regularly furnished with no-hub inlet and outlet, threaded available
- Low type grease interceptor is designed to be installed under the sink or in an area where space is limited
- Draw-off eliminates the messy cleaning job associated with ordinary grease interceptors
- Conforms to PDI Grease Interceptor Standard PDI-G101
- IAPMO Listed, File No. 2697 and C-3878
- Figure Numbers 802-Y & 802-T series, **CSA Certified (7- 50 GPM).**



Flow Control for Series 802-803

Series 802-803

FIG. NO.	GPM FLOW RATE	GREASE CAP LBS	A	B	C	D (LENGTH)	E (HEIGHT)	F (WIDTH)	G (Plug Size)	H	J
802-Y02-04	4	8	02"	6 7/8"	2 3/4"	12 1/4"	9 5/8"	13"	1 1/2"	4 7/8"	2"
802-Y02-07	7	14	02"	7 3/4"	3 1/4"	13 5/8"	11"	14 1/2"	1 1/2"	5 3/4"	2"
802-Y02-10	10	20	02"	8 3/4"	3 5/8"	15"	12 3/8"	15 3/4"	1 1/2"	6 1/4"	2-1/2"
802-Y02-15	15	30	02"	11 1/4"	3 1/2"	17 3/8"	14 3/4"	18 1/4"	1 1/2"	8 3/4"	2-1/2"
802-Y03-20	20	40	03"	12 3/4"	4"	19 3/8"	16 3/4"	20 1/4"	1 1/2"	9 3/4"	3"
802-Y03-25	25	50	03"	14 1/4"	4 1/8"	21"	18 3/8"	21 3/4"	1 1/2"	11 1/4"	3"
802-Y03-35	35	70	03"	14 1/2"	4 1/2"	22 3/8"	19"	23 1/4"	1 1/2"	11 1/2"	3"
802-Y03-50	50	100	03"	14 1/2"	5 1/4"	31 5/8"	19 3/4"	23 1/4"	1 1/2"	11 1/2"	3"
LOW TYPE											
803-Y03-20	20	40	03"	7"	3 3/4"	39 1/2"	10 1/2"	20 3/4"	1 1/2"	4 1/2"	2-1/2"
803-Y03-35	35	70	03"	7"	4 3/4"	52 1/4"	11 3/4"	26 3/4"	1 1/2"	4"	3"
803-Y03-50	50	100	03"	10"	5 15/16"	50 1/4"	15 15/16"	26 3/4"	1 1/2"	7"	3"
LOW TYPE											
802-T02-04	4	8	02"	6 7/8"	2 3/4"	12 1/4"	9 5/8"	13"	1 1/2"	4 7/8"	2"
802-T02-07	7	14	02"	7 3/4"	3 1/4"	13 5/8"	11"	14 1/2"	1 1/2"	5 3/4"	2"
802-T02-10	10	20	02"	8 3/4"	3 5/8"	15"	12 3/8"	15 3/4"	1 1/2"	6 1/4"	2-1/2"
802-T02-15	15	30	02"	11 1/4"	3 1/2"	17 3/8"	14 3/4"	18 1/4"	1 1/2"	8 3/4"	2-1/2"
802-T03-20	20	40	03"	12 3/4"	4"	19 3/8"	16 3/4"	20 1/4"	1 1/2"	9 3/4"	3"
802-T03-25	25	50	03"	14 1/4"	4 1/8"	21"	18 3/8"	21 3/4"	1 1/2"	11 1/4"	3"
802-T03-35	35	70	03"	14 1/2"	4 1/2"	22 3/8"	19"	23 1/4"	1 1/2"	11 1/2"	3"
802-T03-50	50	100	03"	14 1/2"	5 1/4"	31 5/8"	19 3/4"	23 1/4"	1 1/2"	11 1/2v	3"
LOW TYPE											
803-T03-20	20	40	03"	7"	3 3/4"	39 1/2"	10 1/2"	20 3/4"	1 1/2"	4 1/2"	2-1/2"
803-T03-35	35	70	03"	7"	4 3/4"	52 1/4"	11 3/4"	26 3/4"	1 1/2"	4"	3"
803-T03-50	50	100	03"	10"	5 15/16"	50 1/4"	15 15/16"	26 3/4"	1 1/2"	7"	3"

NOTE: Dimensional data is subject to manufacturing tolerances and change without notice.



A Product of:
JAY R. SMITH MFG. CO.
 DIVISION OF SMITH INDUSTRIES, INC.
www.jrsmith.com



SERIES 802-803
 SPM 1013
 11/14