

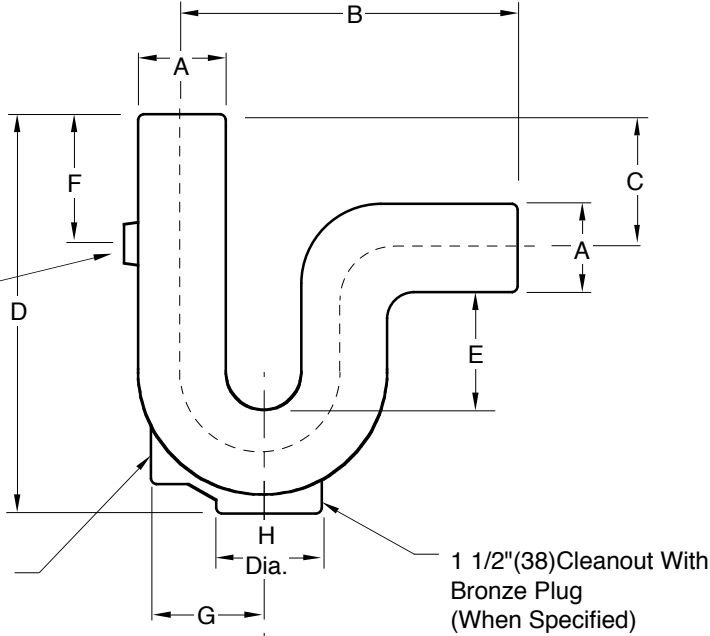


**JAY R. SMITH MFG. CO.**  
 MEMBER OF MORRIS GROUP INTERNATIONAL  
 POST OFFICE BOX 3237  
 MONTGOMERY, ALABAMA 36109-0237 (USA)  
 TEL: 334-277-8520 FAX: 334-272-7396 www.jrsmith.com



LOCATION

# DEEP SEAL TRAP



A	B	C	D	E	F	G	H Dia.
02(50)	10(255)	2 3/4(70)	10(255)	4(100)	3 1/2(89)	2 7/8(73)	2 23/64(60)
03(75)	11 1/2(290)	3(76)	13(330)	5(125)	5 1/2(140)	3 3/4(95)	2 3/4(70)
04(100)	14 1/2(370)	6(150)	17 1/4(440)	5(125)	5 1/2(140)	4 1/4(110)	2 3/4(70)

**REGULARLY FURNISHED:**  
 Duco Cast Iron Deep Seal "P" Trap  
 with Spigot Inlet and Outlet

**VARIATIONS:**  
 1/2(13) or 3/4(19) NPT Flushing Connection  
 1 1/2(38) NPT Cleanout with Bronze Plug  
 Trap Primer Connection -P  
 Specify Size 1/2(13) or 3/4(19) NPT

NOTE: Inlet & Outlet Sized for  
 SW and/or NO-HUB

Note: Dimensions in parentheses are in millimeters

B  
 DRAWING NUMBER 57219S  
 SIZE A  
 SCALE: NONE  
 DATE: 9-23-91  
 APPROVED BY:  
 CHECKED BY:  
 DRAWN BY: TWK  
 7219S  
 DIMENSIONS ARE SUBJECT TO MANUFACTURERS TOLERANCE AND CHANGE WITHOUT NOTICE  
 WE CAN ASSUME NO RESPONSIBILITY FOR USE OF SUPERSEDED OR VOID DATA

REV.	DATE	DESCRIPTION	BY	CKD. BY	WEIGHT POUNDS	VOLUME CUBIC FEET	FIGURE NUMBER
B	4-10-03	Added "S" to 7219	RN	CL			<b>7219S</b>
A	1-15-99	Revised Callouts, Added MM's	TBW	BS			



**WARNING:** Cancer and Reproductive Harm - www.P65Warnings.ca.gov