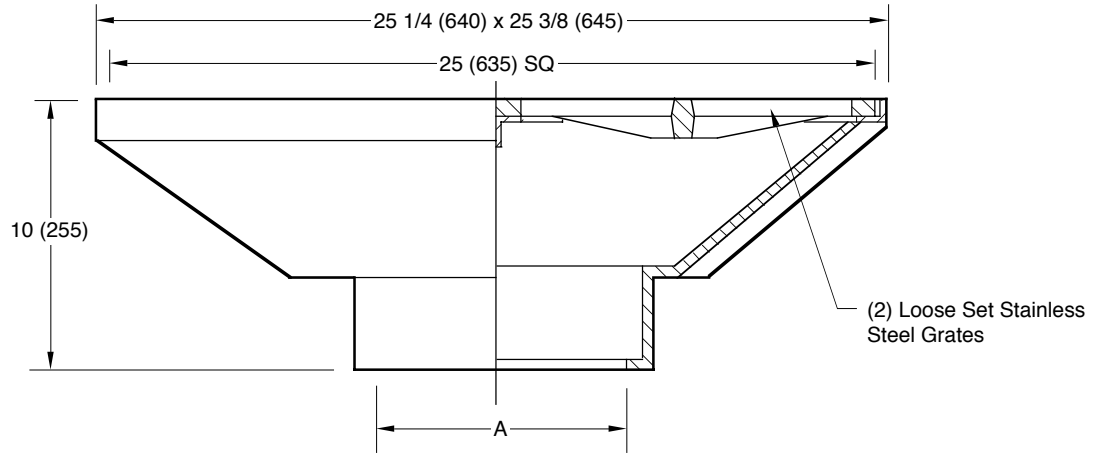


SPECIAL PURPOSE DRAIN

LARGE CAPACITY - BOTTOM OUTLET

FUNCTION: When large grate free area is required for accelerated drainage.

Free Area
 296 SQ IN
 (1910) SQ CM



A (Pipe Size) = 04(100), 05(125), 06(150) or 08(200)

- Fig. 6050C . . . CAULK OUTLET
- Fig. 6050T . . . THREADED OUTLET
- Fig. 6050Y . . . NO-HUB OUTLET

REGULARLY FURNISHED:

Fabricated Stainless Steel Body and Frame with Loose Set Fabricated Stainless Steel Grates.

VARIATIONS:

- Perforated Bucket -B
- Secured Grate -SG
- Secured Grate with Vandal Proof Screws -U

NOTE: This product does not conform to or meet the requirements of ASME Standard No. A112.19.8-2007, titled "Suction Fittings for Use in Swimming Pools, Wading Pools, Spas, and Hot Tubs." This product shall not be used in any installation in swimming pools, wading pools, spas, hot tubs as well as other aquatic facilities. Due to the potential endangerment from arduous and forceful suction, entrapment or entanglement regardless of whether it is hair, head, limbs or other body parts, this product is prohibited from installation in these applications.

NOTE: Dimensions shown in parentheses are in millimeters.

FIGURE NUMBER **6050**
 DRAWN BY: **CMB**
 CHECKED BY: **BS**
 APPROVED BY: **TD**
 DATE: **1-12-88**
 SCALE: **NONE**
 SIZE: **A**
 DRAWING NUMBER **S6050**

WE CAN ASSUME NO RESPONSIBILITY FOR USE OF SUPERSEDED OR VOID DATA
 DIMENSIONS ARE SUBJECT TO MANUFACTURERS TOLERANCE AND CHANGE WITHOUT NOTICE

| | | | | | | | |
|------|----------|--------------------------------------|-----|---------|---------------|-------------------|---|
| REV. | DATE | DESCRIPTION | BY | CKD. BY | WEIGHT POUNDS | VOLUME CUBIC FEET | FIGURE NUMBER 6050 |
| M | 5-10-19 | Added Outlets, Revised Variations | MW | CL | | | |
| L | 4-1-14 | Rev. Callouts, Reg. Furn., Opt. Mat. | TBW | AM | | | |
| K | 12/16/08 | Revised Function | RN | CL | | | |
| J | 12/05/08 | Revised Function & Variations | RN | RN | | | |