

A

**SMITH® JAY R. SMITH MFG. CO.®**  
 MEMBER OF MORRIS GROUP INTERNATIONAL  
 POST OFFICE BOX 3237  
 MONTGOMERY, ALABAMA 36109-0237 (USA)  
 TEL: 334-277-8520 FAX: 334-272-7396 www.jrsmith.com



LOCATION

DRAWING NUMBER  
S4781

SIZE  
A

SCALE:  
NONE

DATE:  
3-18-15

APPROVED BY:  
SJM

CHECKED BY:  
JM

DRAWN BY:  
TBW

4781

FIGURE NUMBER

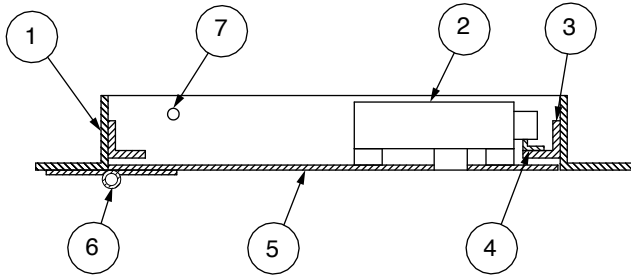
WE CAN ASSUME NO RESPONSIBILITY FOR USE OF SUPERSEDED OR VOID DATA

DIMENSIONS ARE SUBJECT TO MANUFACTURERS TOLERANCE AND CHANGE WITHOUT NOTICE

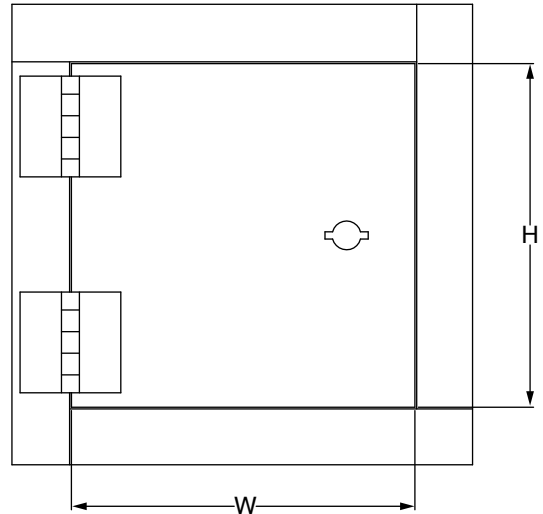
# SLAMMER ACCESS DOORS



- ① Frame
- ② Heavy duty lock
- ③ Door stop
- ④ Lock keeper
- ⑤ Door
- ⑥ Heavy duty hinge
- ⑦ Mounting holes



SIDE VIEW



FRONT VIEW

**REGULARLY FURNISHED:**

Doors are designed to provide security access with the strength and durability to withstand abusive and vandal-prone conditions prevalent in many institutions. Without sacrificing security, these doors allow maintenance personnel access to plumbing chases, shut-off valves and electrical apparatus located behind finished walls. Door is fabricated from 10 gage steel. Frame is 3/16" x 2" x 2" angle steel, welded and with pre-punched mounting holes. Latch is a Folger Adams #10 lock. Hinges are heavy duty and are welded to the door and frame. Door can be provided with a high security, vandal resistant, detention type lock. Doors are manufactured with locks provided by others. Finish is a prime coat suitable for painting.

**GUIDE SPECIFICATION:**

Provide 4781 Series, Slammer Access Doors (specify options). Access Door shall be fabricated from 10 gage steel, and frame from 3/16" x 2" x 2" angle steel, welded and with pre-punched mounting holes. Door shall have heavy duty hinges welded to the door and frame. Finish shall be a prime coat suitable for painting.

**STANDARD AVAILABLE SIZES**

Special sizes available upon request

	NOMINAL DOOR SIZE (W X H)	WALL OPENING	WEIGHT
4781	12" x 12"	12-1/2" x 12-1/2"	29 lbs.
4781	16" x 16"	16-1/2" x 16-1/2"	37 lbs.
4781	18" x 18"	18-1/2" x 18-1/2"	42 lbs.
4781	24" x 24"	24-1/2" x 24-1/2"	59 lbs.
4781	24" x 36"	24-1/2" x 36-1/2"	78.5 lbs.
4781	24" x 48"	24-1/2" x 48-1/2"	96 lbs.
4781	36" x 36"	36-1/2" x 36-1/2"	102 lbs.
4781	36" x 48"	36-1/2" x 48-1/2"	126 lbs.

**VARIATIONS:**

Folger Adams Key for #10 Lock -FA12KEY

A	5-21-19	Rev. Reg. Furn., Rev. Variations	MW	JM
REV.	DATE	DESCRIPTION	BY	CKD. BY

WEIGHT POUNDS	VOLUME CUBIC FEET

FIGURE NUMBER
<b>4781</b>