

N
 DRAWING NUMBER S4025
 SIZE A
 SCALE: NONE
 DATE: 2-16-70
 APPROVED BY: JM
 CHECKED BY: BH
 DRAWN BY: RK
4025 SERIES
 FIGURE NUMBER

WE CAN ASSUME NO RESPONSIBILITY FOR USE OF SUPERSEDED OR VOID DATA
 DIMENSIONS ARE SUBJECT TO MANUFACTURERS TOLERANCE AND CHANGE WITHOUT NOTICE

SMITH® JAY R. SMITH MFG. CO.®
 MEMBER OF MORRIS GROUP INTERNATIONAL
 POST OFFICE BOX 3237
 MONTGOMERY, ALABAMA 36109-0237 (USA)
 TEL: 334-277-8520 FAX: 888-377-7818 www.jrsmith.com

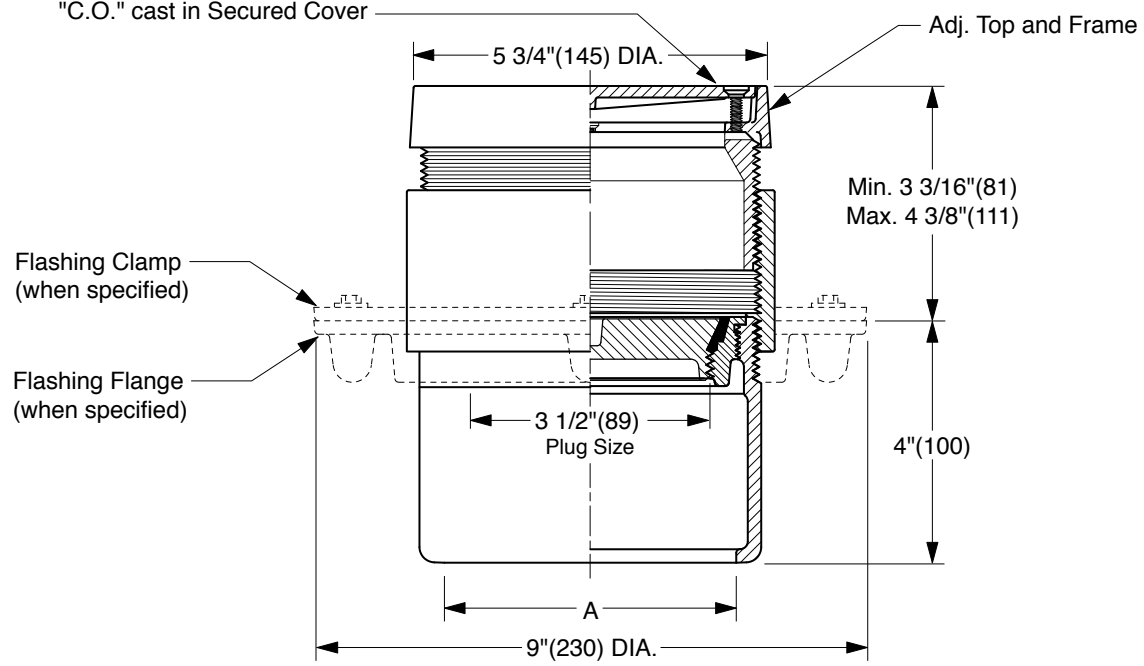


LOCATION

FINISHED FLOOR CLEANOUTS WITH "TWIS-TO-FLOOR®" ADJUSTABLE TOPS

ROUND NICKEL BRONZE TOP

FUNCTION: For use in finished floors bearing foot and medium load wheeled traffic. Allows for easy floor level adjustment.



TWIS-TO-FLOOR® ADJUSTMENT
INSIDE CAULK OUTLET
 "A" (Pipe Size) = 02(50), 03(75) or 04(100)

NOTE: For applications using core drilling, the largest diameter of the cleanout assembly is 6 5/16"(160).

- Fig. 4025C.....Gasket Seal - ABS Plug
- Fig. 4026C.....Gasket Seal - Bronze Plug
- Fig. 4028C.....Taper Thread - Bronze Plug
- Fig. 4029C.....Taper Thread - ABS Plug

(Twis-to-Floor® design shown with gasketed plug.)
NOTE: Dimensions shown in parentheses are in millimeters.

REGULARLY FURNISHED:
 Duco Cast Iron Cleanout with Round Adjustable Scoriated Secured Nickel Bronze Top. Closure Plug Type as Indicated By Figure Number Selected.

- VARIATIONS:**
- Flashing Flange -F
 - Flange with Flashing Clamp -F-C
 - Carpet Clamping Type -X
 - Carpet Marker Type -Y
 - Vandal Proof Top -U
 - Wide Flange (DX)

- OPTIONAL MATERIALS:**
- Galvanized Cast Iron -G
 - Polished Bronze Top -PB
 - Stainless Steel Top -NBSS

REV.	DATE	DESCRIPTION	BY	CKD. BY	WEIGHT POUNDS	VOLUME CUBIC FEET	FIGURE NUMBER
	7-21-21	Added SS Top Option	KK	CL			4025 SERIES
	10-18-17	Revised Variations	TBW	CL			
	12-18-08	Revised Variations	RN	BW			