

F

SMITH® JAY R. SMITH MFG. CO.®
 MEMBER OF MORRIS GROUP INTERNATIONAL
 POST OFFICE BOX 3237
 MONTGOMERY, ALABAMA 36109-0237 (USA)
 TEL: 334-277-8520 FAX: 888-377-7818 www.jrsmith.com

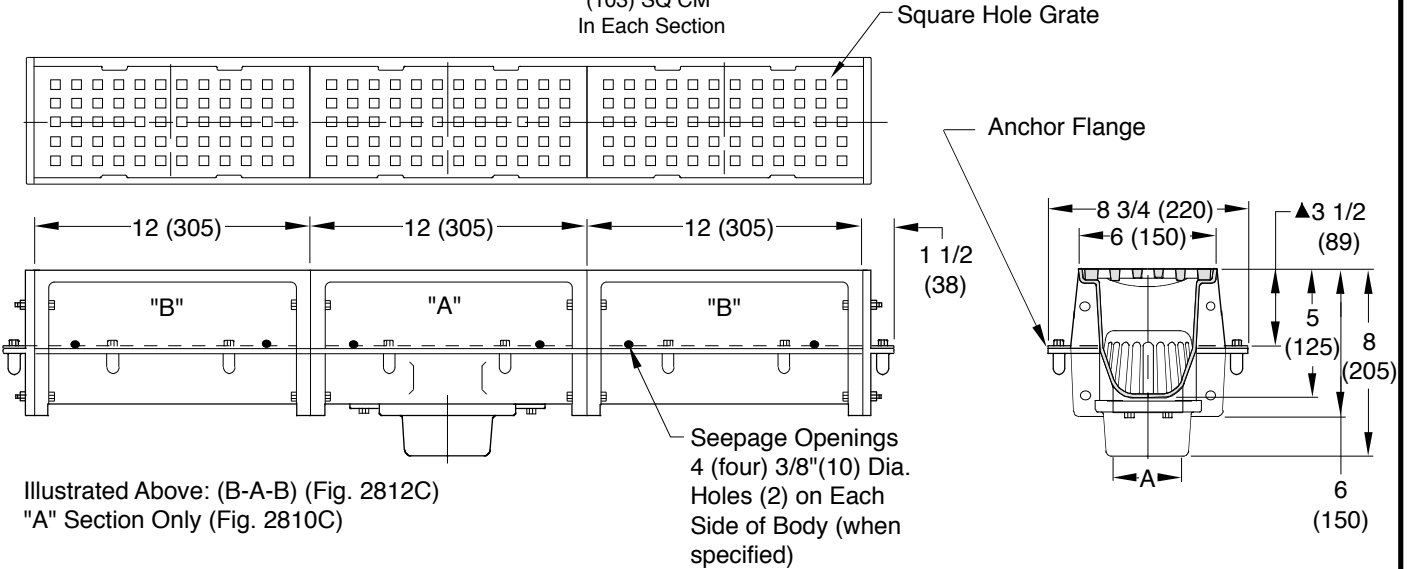


LOCATION

NARROW MEDIUM DUTY TRENCH DRAINS

HEAVY MEDIUM MODULAR TRENCH DRAINS

FREE AREA
 16 SQ IN
 (103) SQ CM
 In Each Section



Illustrated Above: (B-A-B) (Fig. 2812C)
 "A" Section Only (Fig. 2810C)

▲ Add 3/4" (19) when bronze or nickel bronze top is specified.

A(Pipe Size) = 02(50), 03(75) or 04"(100)

- FIG. 2810C..... CAULK OUTLET
- FIG. 2810Y..... NO-HUB OUTLET

- FIG. 2810 "A" Section
- FIG. 2811 "A" Section with (1) "B" Section
- FIG. 2812 "A" Section with (2) "B" Section
- FIG. 2813 "A" Section with (3) "B" Section
- FIG. 2814 "A" Section with (4) "B" Section
- FIG. 2815 "A" Section with (5) "B" Section
- FIG. 2816 "A" Section with (6) "B" Section
- FIG. 2817 "A" Section with (7) "B" Section
- FIG. 2818 "A" Section with (8) "B" Section
- FIG. 2819 "A" Section with (9) "B" Section
- FIG. 2820 "A" Section with (10) "B" Section

NOTE: Last digit of figure number designates number of "B" sections.

NOTE: Any figure number other than the 2810 and 2811 must be furnished with sectional layout when placing order, to insure proper assembly at job site.

NOTE: Cast Iron Grate - Medium Duty
 Ductile Iron Grate - Heavy Duty

REGULARLY FURNISHED:
 Duco Cast Iron Flanged Body and End Plates with Cast Iron Anti-Shift Loose Set Square Hole ADA Grate, Dome Bottom Strainer.

- VARIATIONS:**
- Flashing Clamp -C
 - Slotted Cast Iron Grate -SG
 Free Area = 21.5 SQ IN (139) SQ CM
 - Vandal Proof -U
 - Quad Close Trap Seal (Specify Fig. 2692)

- OPTIONAL MATERIALS:**
- Ductile Iron Grates -M
 - Galvanized Cast Iron -G
 - Nickel Bronze Top -NB
 - Polished Bronze Top -PB
 - Nickel Bronze Heel Proof Top -NBHP
 - Polished Bronze Heel Proof Top -PBHP

NOTE: Dimensions shown in parentheses are in millimeters.

DRAWING NUMBER
S2810 Series

SIZE
A

SCALE:
NONE

DATE:
12-19-96

APPROVED BY:
BS

CHECKED BY:
WMS

DRAWN BY:
EMB

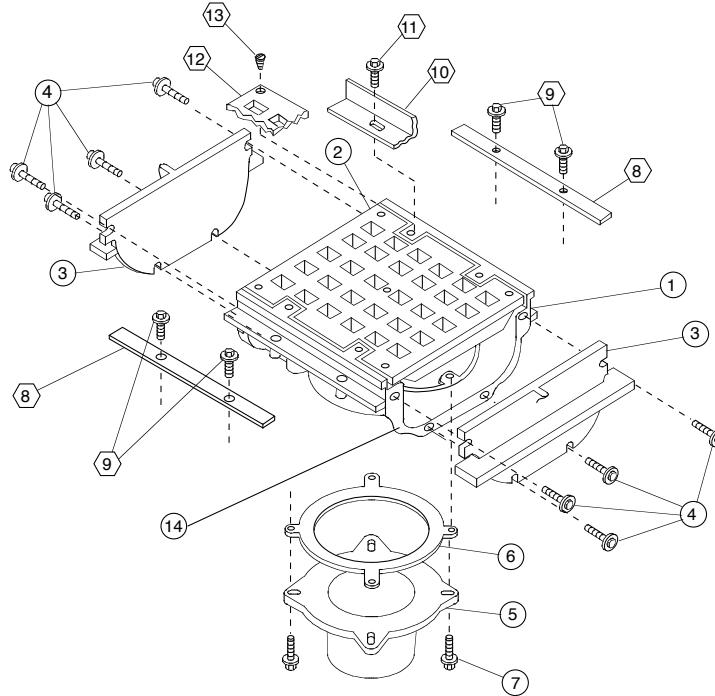
2810 Series

WE CAN ASSUME NO RESPONSIBILITY FOR USE OF SUPERSEDED OR VOID DATA

DIMENSIONS ARE SUBJECT TO MANUFACTURERS TOLERANCE AND CHANGE WITHOUT NOTICE

FIGURE NUMBER	F E D C	4-7-22 5-19-2020 9-24-15 7-16-15	Added -NBHP and -PBHP to opt. Removed Function, Added Note Removed Note Revised Variations	KK MW TBW TBW	CL JM CL CL	WEIGHT POUNDS	VOLUME CUBIC FEET	FIGURE NUMBER 2810 Series
REV.	DATE	DESCRIPTION	BY	CKD. BY				

ASSEMBLY DRAWING



- NOTES:**
- Numbers designated thus are regularly furnished parts.
 - ⬡ Numbers designated thus are variations/options and must be specified.

* Quantities are per section.

NO.	DESCRIPTION	QU.*	NO.	DESCRIPTION	QU.*
①	Flanged Body (Specify)	1	⑧	Flashing Flange	4
②	Grate	1	⑨	5/16(8)-18 x 3/4(19) Bolt with Washer	8
③	Flanged End Plates	2	⑩	Body Veneer	1
④	5/16(8)-18 x 1 3/4(44) Bolts/Nuts & Washer	8	⑪	5/16(8)-18 x 3/4(19) Bolt with Washer	4
⑤	Hub (Specify Size)	1	⑫	Grate Veneer	1
⑥	Gasket	1	⑬	10-24 x 7/16(11) Flat Head Screws	5
⑦	5/16(8)-18 x 1 1/4(32) Bolt & Washer	4	⑭	Apply Permatex #2 Seal to each end of each body section	2

DRAWING NUMBER
S2810BS

SIZE
A

SCALE:
NONE

DATE:
4-8-08

APPROVED BY:
AM

CHECKED BY:
AM

DRAWN BY:
TBW

FIGURE NUMBER
2810

Assembly Drawing

WE CAN ASSUME NO RESPONSIBILITY FOR USE OF SUPERSEDED OR VOID DATA

DIMENSIONS ARE SUBJECT TO MANUFACTURERS TOLERANCE AND CHANGE WITHOUT NOTICE

REV.	DATE	DESCRIPTION	BY	CKD. BY	WEIGHT POUNDS	VOLUME CUBIC FEET	FIGURE NUMBER 2810 Assembly Drawing
------	------	-------------	----	---------	---------------	-------------------	--