

# FLOOR DRAINS AND ACCESSORIES

## 200 Series

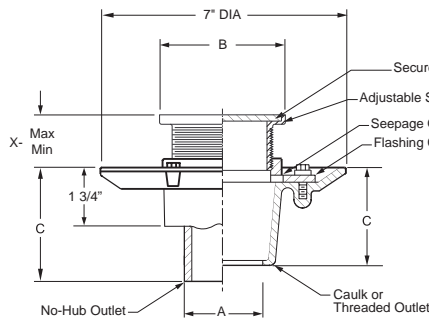
TAG \_\_\_\_\_  
 \_\_\_\_\_

### Shower Drain, Series 220 - 221

**Product Description:** Cast iron shower drain with adjustable strainer head.

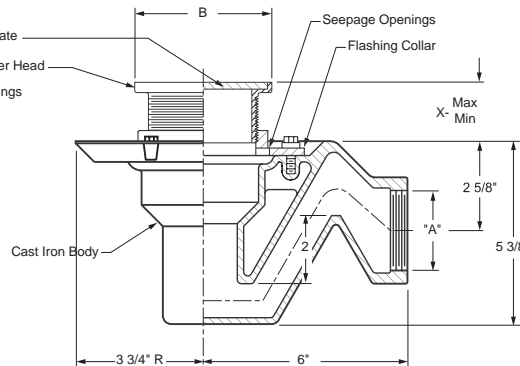
**Features and Benefits:**

- Available with 4" round polished bronze or chrome plated top with 3" threaded shank
- Available with 5" square nickel bronze or chrome plated top with 3" threaded shank
- Cast iron body coated to protect against corrosion
- Available with bottom or side outlet bodies
- Side outlet body provided with integral trap
- 2" Threaded outlet available for both bottom or side outlet bodies
- 2" Caulk and No-Hub outlet available for bottom outlet body only
- Flashing collar standard



C (Body Height)		
Caulk	Threaded	No-Hub
2 1/2"	2 1/2"	3"

**Series 220**



**Series 221**

Series Number	Description	Outlet Size "A"		Outlet Type
220-C02	Shower Drain, Body Only	2"		Caulk
220-Y02	Shower Drain, Body Only	2"		No-Hub
220-T02	Shower Drain, Body Only	2"		Threaded
221-T02	Shower Drain w/Trap, Body Only	2"		Threaded
Series Number	Description	Top Size "B"	X- Min. Max.	Pipe Size
220-10	Adjustable Round Chrome Plated Strainer	3 3/4"	1" - 1 7/8"	3" Threaded Shank
220-11	Adjustable Round Polished Bronze Strainer	3 3/4"	1" - 1 7/8"	3" Threaded Shank
220-16	Adjustable Square Chrome Plated Strainer	5"	1 3/8" - 2 1/4"	3" Threaded Shank
220-17	Adjustable Square Nickel Bronze Strainer	5"	1 3/8" - 2 1/4"	3" Threaded Shank

NOTE: Dimensional data is subject to manufacturing tolerances and change without notice.



A Product of:  
**JAY R. SMITH MFG. CO.**  
 DIVISION OF SMITH INDUSTRIES, INC.  
 www.jrsmith.com

**WARNING:** Cancer and Reproductive Harm - [www.P65Warnings.ca.gov](http://www.P65Warnings.ca.gov)

**Series 220 - 221**

SPM 1013  
 09/20