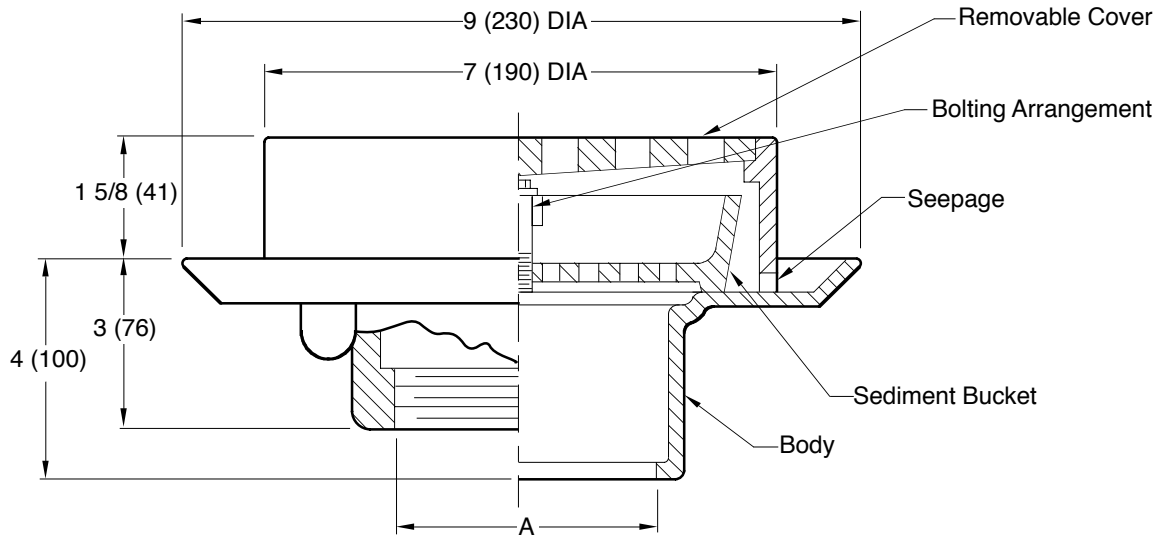


FLOOR DRAIN

Load Rating: Light Duty having a Safe Live (Static) Load less than 2,000 lbs. (900 kg) per ASME A112.6.3 Floor Drain Standard. For the specific Safe Live Load rating of any grate, contact the Smith representative or factory direct.

FREE AREA
 9.25 SQ IN
 (59.67 SQ CM)



A(pipe Size) = 02(50), 03(75) or 04(100)

- Fig. 2109C . . . CAULK OUTLET
- Fig. 2109T . . . THREADED OUTLET
- Fig. 2109Y . . . NO-HUB OUTLET

REGULARLY FURNISHED:
 Duco Cast Iron Body, Sediment Bucket and Grate.

VARIATIONS:

- Flat Bottom Strainer -FBS
- Non-Tilting Grate L/ Bucket (Specify Fig. 2108)
- Side Outlet
- L Speedi-Set Service Weight Outlet
- LXH Speedi-Set Extra Heavy Outlet
- Quad Close Trap Seal (Specify Fig. 2692)
- Trap Primer Connection -P050 1/2(13), -P075 3/4(19)

OPTIONAL MATERIALS:

- All Galvanized -G
- Nickel Bronze Top -NB
- Polished Bronze Top -PB

NOTE: Dimensions shown in parentheses are in millimeters.

DRAWING NUMBER **S2109**
 SIZE **A**
 SCALE: **NONE**
 DATE: **12-9-71**
 APPROVED BY: **BH**
 CHECKED BY: **BH**
 DRAWN BY: **TO**
2109
 DIMENSIONS ARE SUBJECT TO MANUFACTURERS TOLERANCE AND CHANGE WITHOUT NOTICE
 WE CAN ASSUME NO RESPONSIBILITY FOR USE OF SUPERSEDED OR VOID DATA

M	5-3-22	Added Free Area, Rev. Vari. & Op.M	KK	CL	WEIGHT POUNDS	VOLUME CUBIC FEET	FIGURE NUMBER
L	7-25-19	Added Load Rating	MW	JM			2109
K	6-17-19	Removed Function	MW	JM			
J	7-3-18	Revised Variations, Pipe Size mm	TBW	CL			
REV.	DATE	DESCRIPTION	BY	CKD. BY			