

G

SMITH® JAY R. SMITH MFG. CO.®
 MEMBER OF MORRIS GROUP INTERNATIONAL
 POST OFFICE BOX 3237
 MONTGOMERY, ALABAMA 36109-0237 (USA)
 TEL: 334-277-8520 FAX: 888-377-7818 www.jrsmith.com



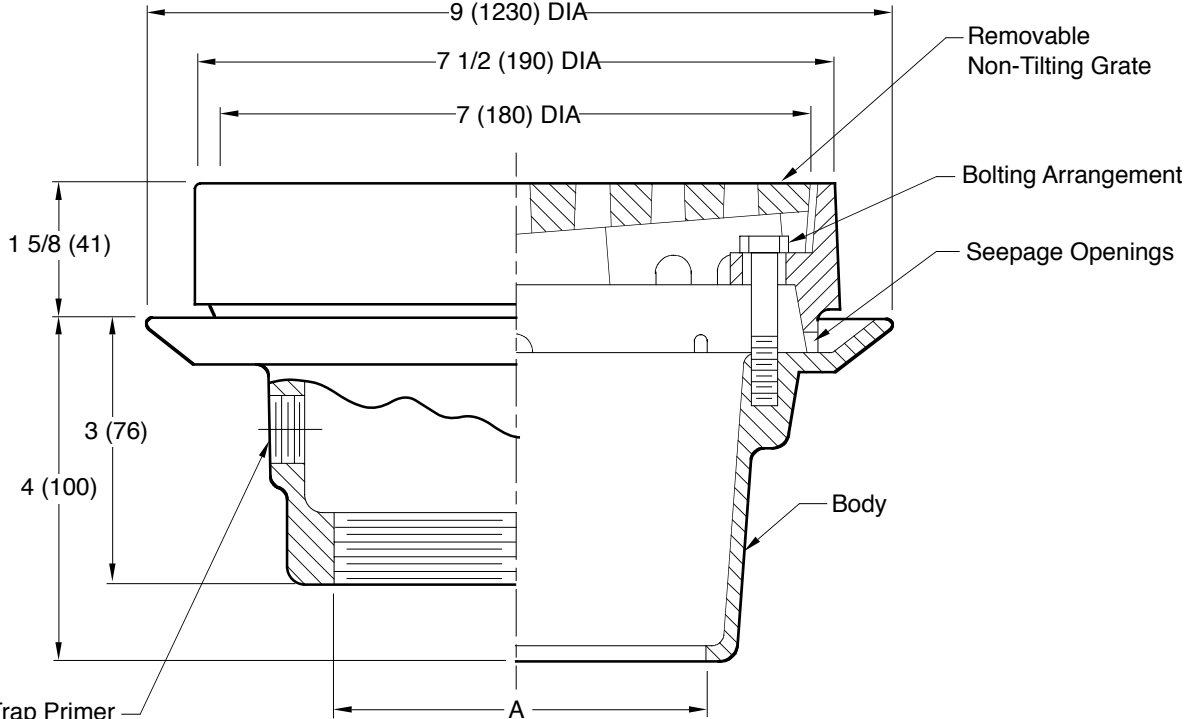
MEMBER OF:

LOCATION

FLOOR DRAIN

Load Rating: Heavy Duty having a Safe Live (Static) Load between 5,000 lbs. (2,250 kg) and 7,499 lbs (3,375 kg) per ASME A112.6.3 Floor Drain Standard. For the specific Safe Live Load rating of any grate, contact the Smith representative or factory direct.

FREE AREA
9.25 SQ IN
(59.67 SQ CM)



A(Pipe Size) = 02(50), 03(75), or 04(100)

Fig. 2108C . . . CAULK OUTLET
 Fig. 2108Y . . . NO-HUB OUTLET

REGULARLY FURNISHED:
Duco Cast Iron Body, Collar and Non-Tilting Slotted Grate.

- VARIATIONS:**
- Flat Bottom Strainer -FBS
 - Trap Primer Connection -P050 1/2(13), -P075 3/4(19)
 - T Threaded Outlet
 - Quad Close Trap Seal (Specify Fig. 2692)
 - L Speedi-Set Service Weight Outlet
 - LXH Speedi-Set Extra Heavy Outlet

- OPTIONAL MATERIALS:**
- All Galvanized -G
 - Nickel Bronze Top -NB
 - Polished Bronze Top -PB

NOTE: Dimensions shown in parentheses are in millimeters.

DRAWING NUMBER
S2108

SIZE
A

SCALE:
NONE

DATE:
12-16-88

APPROVED BY:
TDavis

CHECKED BY:
CR

DRAWN BY:
WAS

2108

WE CAN ASSUME NO RESPONSIBILITY FOR USE OF SUPERSEDED OR VOID DATA

DIMENSIONS ARE SUBJECT TO MANUFACTURERS TOLERANCE AND CHANGE WITHOUT NOTICE

G	5-10-22	Added Load Rating	KK	CL	WEIGHT POUNDS	VOLUME CUBIC FEET	FIGURE NUMBER 2108
F	5-3-22	Revised Variations & Opt. Mat.	KK	CL			
E	6-17-19	Removed Function	MW	JM			
D	7-3-18	Revised Variations, Pipe Size mm	TBW	CL			
REV.	DATE	DESCRIPTION	BY	CKD. BY			