

C



JAY R. SMITH MFG. CO.
 MEMBER OF MORRIS GROUP INTERNATIONAL
 POST OFFICE BOX 3237
 MONTGOMERY, ALABAMA 36109-0237 (USA)
 TEL: 334-277-8520 FAX: 334-272-7396 www.jrsmith.com



MEMBER OF:

LOCATION

DRAWING NUMBER
S2090SIZE
ASCALE:
NONEDATE:
4-10-70

APPROVED BY:

CHECKED BY:
BHDRAWN BY:
JLS

WE CAN ASSUME NO RESPONSIBILITY FOR USE OF SUPERSEDED OR VOID DATA

DIMENSIONS ARE SUBJECT TO MANUFACTURERS TOLERANCE AND CHANGE WITHOUT NOTICE

SPECIAL PURPOSE DRAINS

PIT OR DEPRESSED AREA DRAIN

FUNCTION: Used in the side wall of pits such as the base of elevator shafts where a vertical grate and side outlet shallow rough-in is required. Optional backwater valve insures positive protection against backflow which could flood pit and damage equipment.

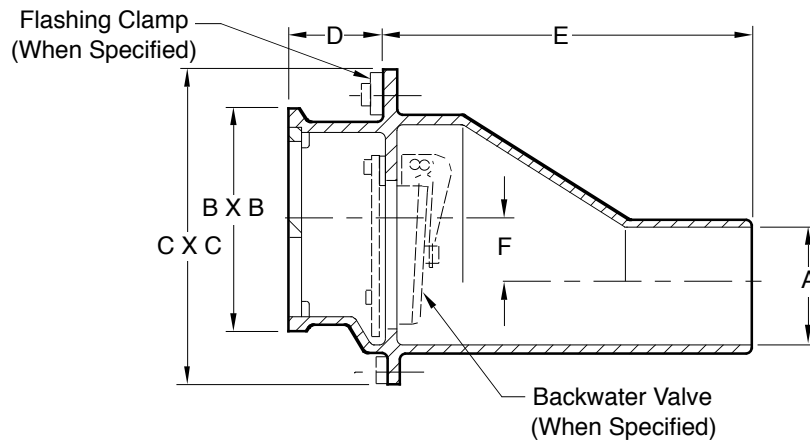


Fig. 2090S. . . . SPIGOT OUTLET

A PIPE SIZE	B x B	C x C	D	E	F	Free Area SQ. IN. (SQ CM)
*03 (75)	6 3/4(170) x 9 1/2(240)	10 1/4(260) x 12(305)	3 (76)	11 1/4 (285)	2 3/4 (70)	16 1/2 (106)
*04 (100)	6 3/4(170) x 9 1/2(240)	10 1/4(260) x 12(305)	3 (76)	11 1/4 (285)	2 1/4 (57)	16 1/2 (106)
05 (125) & 06 (150)	7 3/4(195) x 11(280)	9 3/4(250) x 13(330)	4 (100)	13 1/4 (335)	1 1/4 (32)	24 1/2 (158)
08 (200)	12 1/2(330) x 14 1/2(370)	17 1/4(440) x 19(485)	4 (100)	22 (560)	4 3/4 (120)	56 (361)

*Sized for NO-HUB and/or Service Weight.

REGULARLY FURNISHED:

Duco Cast Iron Body and Secured Grate.

VARIATIONS:

Flashing Clamp -C
 Backwater Valve -V

OPTIONAL MATERIALS:

Galvanized -G
 Polished Bronze Face -PB
 Nickel Bronze Face -NB

NOTE: These valves, when supplied with optional backwater valve offer protection against backwater surges. Backflow is prevented when not obstructed by debris or sludge. Use for gravity flow only, not pressurized application.

NOTE: Dimensions shown in Parentheses are in millimeters.

2090

FIGURE
NUMBER

REV.	DATE	DESCRIPTION	BY	CKD. BY
C B A	09/03/10 2-11-93 12-31-80	Changed Table, Changed Note Chg'd BWV Add Flashing Clamp	JJ EMB CR	CL JCS

WEIGHT
POUNDSVOLUME
CUBIC FEET

FIGURE NUMBER

2090



WARNING: Cancer and Reproductive Harm - www.P65Warnings.ca.gov