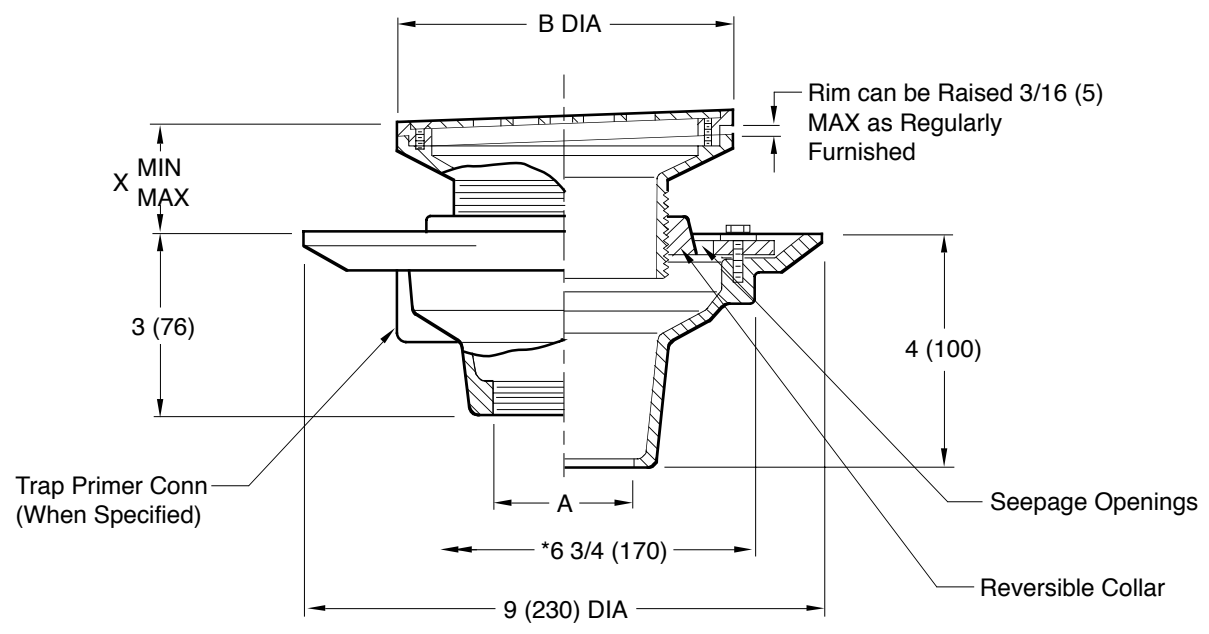


FLOOR OR SHOWER DRAIN

DRAWING NUMBER: S2010 (-TT)
 SIZE: A
 SCALE: NONE
 DATE: 12-11-68
 APPROVED BY: WZ
 CHECKED BY: WZ
 DRAWN BY: BH
 FIGURE NUMBER: 2010 (-TT)

WE CAN ASSUME NO RESPONSIBILITY FOR USE OF SUPERSEDED OR VOID DATA



- Fig. 2010C (-TT) CAULK OUTLET
- Fig. 2010T (-TT) THREADED OUTLET

NOTE: Dimensions shown in parentheses are in millimeters.
NOTE: * MIN 6 3/4 (170) hole required for core drilled applications.

A SIZE	B	MIN	X	MAX
02(50)	05(125)	1 1/2(38)	2 1/2(64)	
03(75)	06(150)	1 1/2(38)	2 1/2(64)	
04(100)	08(205)	1 3/4(44)	2 3/4(70)	

REGULARLY FURNISHED:
 Duco Cast Iron Body and Flashing Collar, Adjustable Strainer Head as Indicated by Suffix Letter Selected and Secured Grate.

- VARIATIONS:**
- Backwater Valve -V
 - Round Strainer Heads 07(180), 09(230) & 10(255)
 - Sediment Bucket -B
 - Trap Primer Connection -P050 1/2" (13) & -P075 3/4" (19)
 - Vandal Proof Screws -U
 - No Hub Outlet (Specify 2005 -TT)

- OPTIONAL MATERIALS:**
- Cast Bronze Body -BB
 - Chrome Plated Top -CP
 - Galvanized Cast Iron Body -G
 - Nickel Bronze -NB
 - Polished Bronze Top -PB

L	7-16-19	Added Variation	MW	TK	WEIGHT POUNDS	VOLUME CUBIC FEET	FIGURE NUMBER 2010 (-TT)
K	11-10-17	Revised Dimension	TBW	CL			
J	7-18-95	Submittal Update	EMB	BS			
I	10-17-91	Rev. Reg. Furn.	CMB	BW			
REV.	DATE	DESCRIPTION	BY	CKD. BY			