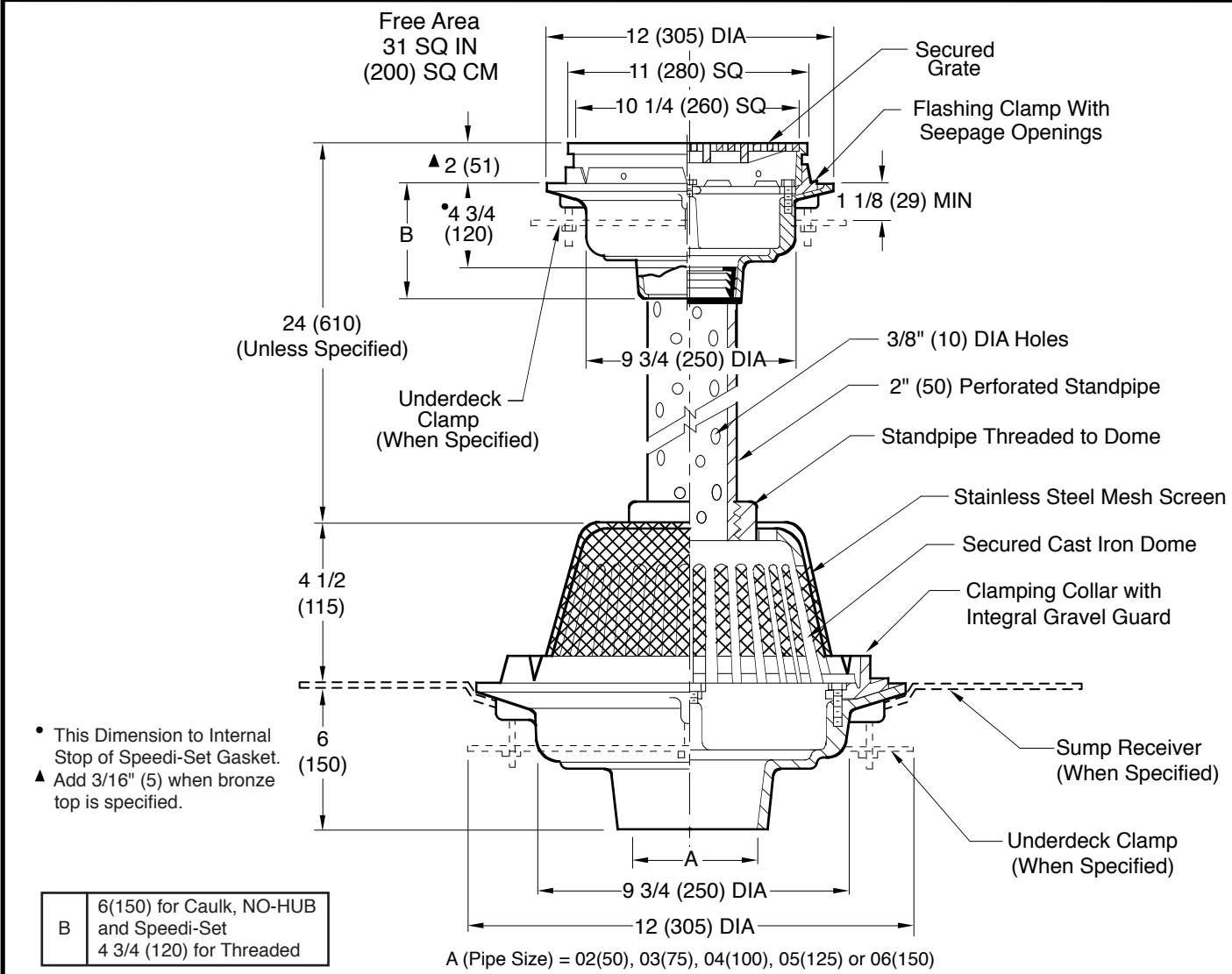


PLAZA AND PLANTER DRAIN

DRAWING NUMBER: S1920
 SIZE: A
 SCALE: NONE
 DATE: 1-24-07
 APPROVED BY: AM
 CHECKED BY: AM
 DRAWN BY: RN
 DIMENSIONS ARE SUBJECT TO MANUFACTURERS TOLERANCE AND CHANGE WITHOUT NOTICE



REGULARLY FURNISHED:

Upper Body Duco Cast Iron Promenade Deck Drain with Flashing Clamp, Seepage Openings and Secured Square Hole Light Duty Grate. Duco Cast Iron Lower Body with Combined Flashing Clamp and Gravel Stop with Dome Covered with Stainless Steel Mesh Screen. Upper and Lower Body assemblies Secured to Perforated Bronze Standpipe.

VARIATIONS:

- Sump Receiver -R
- Underdeck Clamp -C
- Vandal Proof Grate -U
- L Speedi-Set Service Weight 02"(50), 03"(75) & 04"(100) sizes only (Fig. 1450 only)
- LXH Speedi-Set Extra Heavy 02"(50), 03"(75) & 04"(100) sizes only (Fig. 1450 only)
- Secondary Flashing Clamp -C2
- T Threaded Outlet

OPTIONS:

- Upper Drain as Specified.
- Stainless Steel Mesh Screen over Perforated Standpipe.
- PVC Standpipe
- Ductile Iron Grate -M
- Galvanized Cast Iron -G
- Nickel Bronze Top -NB
- Polished Bronze Top -PB
- Stainless Steel Standpipe -SSP
- 4" Dia. Stainless Steel Standpipe -SSP4

NOTE: Dimensions shown in parentheses are in millimeters.

E	02/16/21	Removed "A" width line	KK	CL	WEIGHT POUNDS	VOLUME CUBIC FEET	FIGURE NUMBER 1920
D	06/06/19	Revised Options, Added -SSP	MW	TK			
C	04/19/10	Added 24 unless specified	JJ	TK			
B	03/25/10	Removed SQ note	JJ	TK			
REV.	DATE	DESCRIPTION	BY	CKD. BY			