

SPECIAL PURPOSE COMBO ROOF DRAIN

DRAWING NUMBER
s1851

SIZE
A

SCALE:
NONE

DATE:
7-30-2020

APPROVED BY:
CL

CHECKED BY:
CL

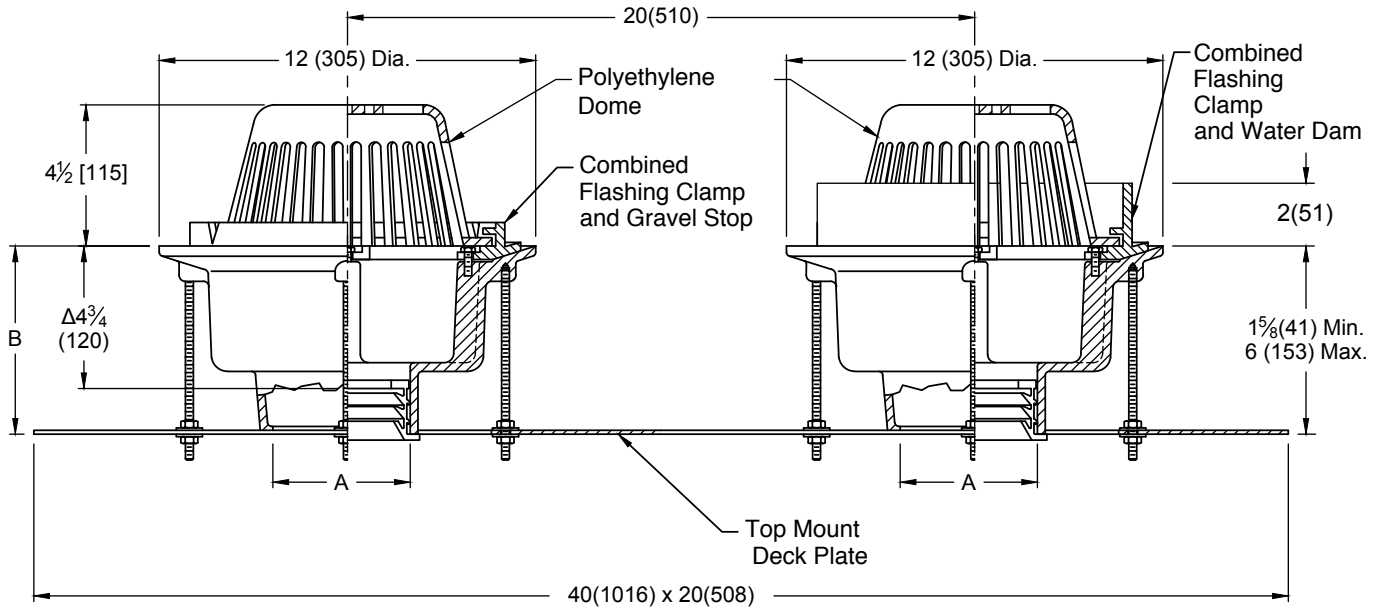
DRAWN BY:
MW

FIGURE NUMBER
1851

WE CAN ASSUME NO RESPONSIBILITY FOR USE OF SUPERSEDED OR VOID DATA

DIMENSIONS ARE SUBJECT TO MANUFACTURERS TOLERANCE AND CHANGE WITHOUT NOTICE

Free Area
71.50 SQ IN
(461) SQ CM



ΔThis Dimension to Internal Stop of Speedi-Set Gasket.

recommended deck opening per drain
12 (305) DIA

A SIZE	02 (50)	03 (75)	04 (100)	05 (125)	06 (150)
B (Body Height)	6 (150) for Caulk, NO-HUB and Speedi-Set 4 3/4 (120) for Threaded				

- Fig. 1851C . . . CAULK OUTLET
- Fig. 1851Y . . . NO-HUB OUTLET
- Fig. 1851T . . . THREADED OUTLET

REGULARLY FURNISHED:

Duco Cast Iron Bodies with Combined Flashing Clamp and Gravel Stop for Roof Drain and Combined Flashing Clamp and 2(51) High External Water Dam for Overflow Drain, Polyethylene Domes and Top Mount Double Deck Plate with Securing Holes and Hardware for Elevating Drains.

VARIATIONS:

- L Speedi-Set Service Weight 02(50), 03(75), 04(100) sizes only
- LXH Speedi-Set Extra Heavy 02(50), 03(75), 04(100) sizes only
- Vandal Proof Dome -U
- 2 1/2(64), 3(76) or 4(102) Water Dams Available -WD025, -WD03 or -WD04

OPTIONAL MATERIALS:

- Aluminum Dome -AD
- Cast Iron Dome -CID
- Galvanized Cast Iron -G
- Rough Bronze Dome -RBD

NOTE: Dimensions shown in parentheses are in millimeters

REV.	DATE	DESCRIPTION	BY	CKD. BY	WEIGHT POUNDS	VOLUME CUBIC FEET	FIGURE NUMBER 1851
------	------	-------------	----	---------	---------------	-------------------	------------------------------