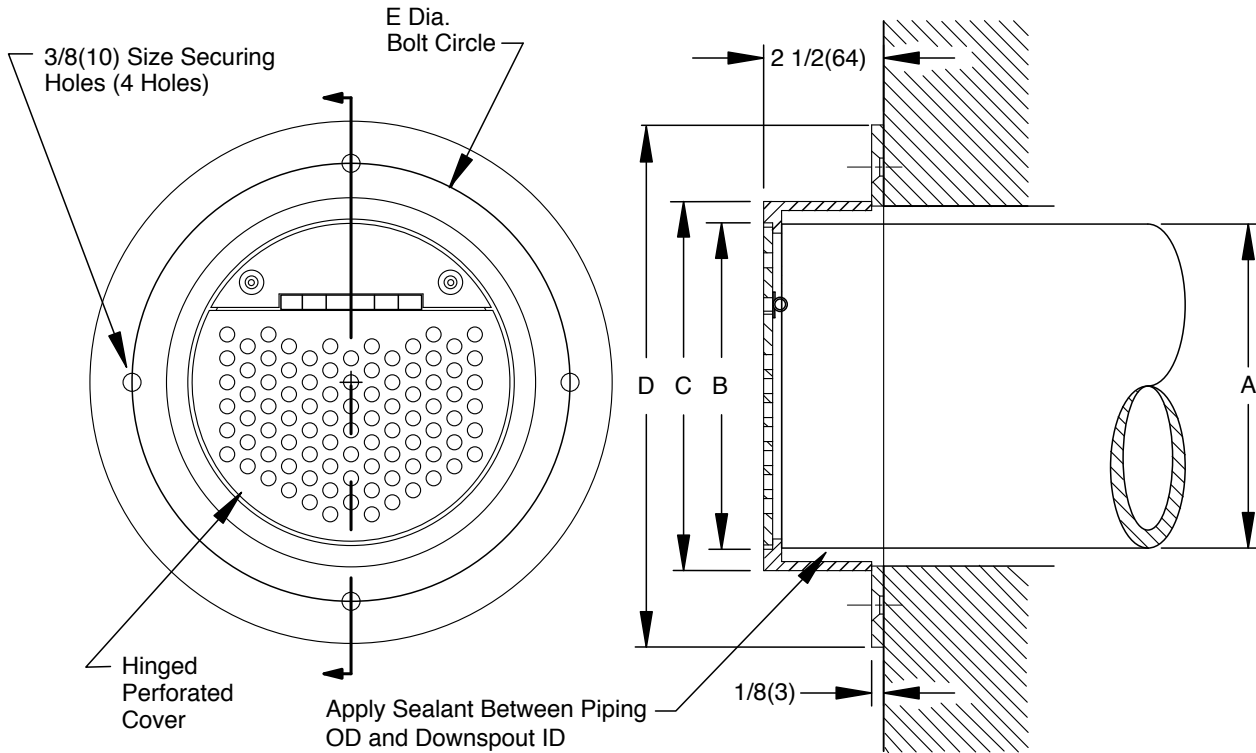


SPECIAL PURPOSE DOWNSPOUT COVER



FRONT VIEW

RIGHT SIDE SECTION VIEW

	A (Pipe Size)	B DIA.	C DIA.	D DIA.	E DIA.
	0150(38)	3 1/2(89)	4 1/2(115)	7 11/16(194)	6(150)
	02(50)	3 1/2(89)	4 1/2(115)	7 11/16(194)	6(150)
	03(75)	3 1/2(89)	4 1/2(115)	7 11/16(194)	6(150)
	04(100)	4 9/16(116)	5 9/16(142)	8 3/4(220)	7 1/8(181)
	05(125)	5 5/8(143)	6 5/8(168)	9 13/16(251)	8 1/4(210)
	06(150)	6 11/16(169)	7 11/16(194)	10 7/8(278)	9(230)
	08(200)	8 11/16(219)	9 11/16(249)	12 7/8(328)	11 1/4(285)
	10(250)	10 13/16(276)	11 13/16(301)	15(380)	13 1/2(345)
	12(305)	12 13/16(326)	13 13/16(351)	17(430)	15 1/2(395)
	15(380)	16(405)	16 15/16(429)	20 1/8(513)	18 1/2(470)
	16(405)	16(405)	16 15/16(429)	20 1/8(513)	18 1/2(470)
	18(457)	18 9/16(471)	18 15/16(481)	22 1/4(565)	20 3/8(517)

Fig. 1775DOWNSPOUT COVER

REGULARLY FURNISHED:
 Fabricated Type 304 Stainless Steel
 Downspout Cover with Hinged Perforated Cover.

VARIATIONS:
 Vandal Proof -U

OPTIONAL MATERIALS:
 Fabricated Polished Brass -PB
 Fabricated Chrome Plated Brass -CP

NOTE: Dimensions shown in parentheses are in millimeters.

DRAWING NUMBER **s1775**
 SIZE **A**
 SCALE: **NONE**
 DATE: **03-07-05**
 APPROVED BY: **JM**
 CHECKED BY: **JM**
 DRAWN BY: **JJ**
 FIGURE NUMBER **1775**
 DIMENSIONS ARE SUBJECT TO MANUFACTURERS TOLERANCE AND CHANGE WITHOUT NOTICE
 WE CAN ASSUME NO RESPONSIBILITY FOR USE OF SUPERSEDED OR VOID DATA

H G F E	2-11-21 1-5-18 9-18-17 12/11/14	Removed Function Revised Drawing, Dimension Added Note Added 16" & 18" Outlets	KK TBW TBW TBW	AM CL AM TWK	WEIGHT POUNDS	VOLUME CUBIC FEET	FIGURE NUMBER 1775
REV.	DATE	DESCRIPTION	BY	CKD. BY			