



**JAY R. SMITH MFG. CO.**  
 MEMBER OF MORRIS GROUP INTERNATIONAL  
 POST OFFICE BOX 3237  
 MONTGOMERY, ALABAMA 36109-0237 (USA)  
 TEL: 334-277-8520 FAX: 334-272-7396 www.jrsmith.com



MEMBER OF:

LOCATION

# GENERAL PURPOSE ROOF DRAINS

## 8 1/2" (215) DIAMETER - LOW PROFILE DOME

**FUNCTION:** Used in flat roofs, gutters or valleys of any construction. Small diameter pan is particularly adaptable to gutters and valleys where limited space is available. Flashing clamp holds flashing and roofing materials without puncturing. Low profile dome provides sufficient free area for quick drainage of rain water and protects the drain sump and connected piping from the intrusion of debris.

Free Area  
 41.5 SQ IN  
 (268) SQ CM

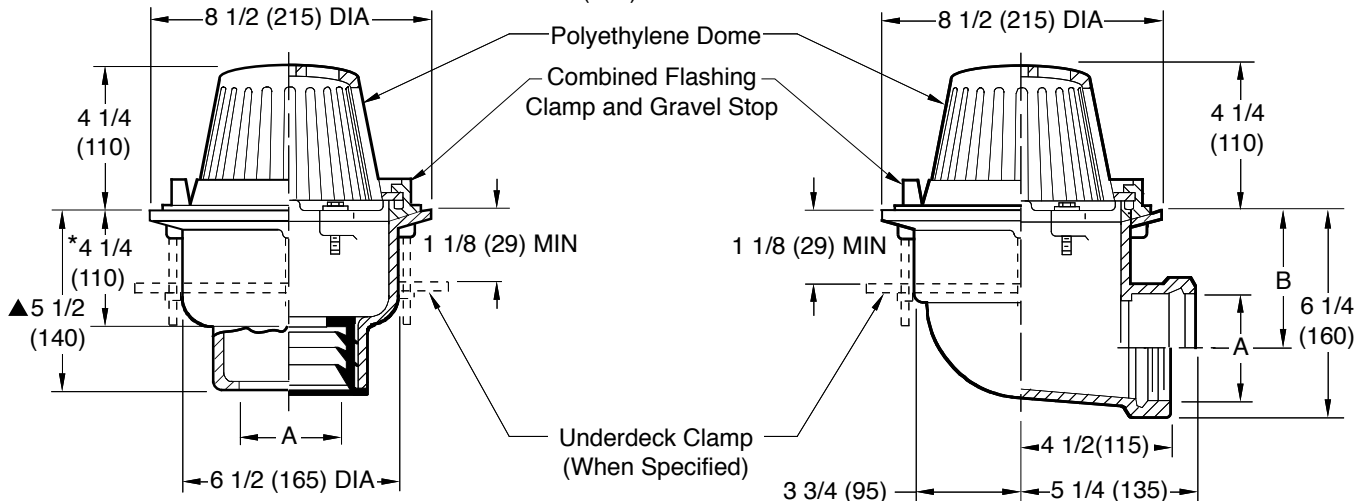


Fig. 1330C . . . . CAULK OUTLET  
 Fig. 1330Y . . . . NO-HUB OUTLET

\*This Dimension to Internal

Fig. 1340C . . . . CAULK OUTLET  
 Fig. 1340T . . . . THREADED OUTLET

A (Pipe Size) = 02(50), 03(75) or 04(100)

recommended deck opening

with suffix -R	9(230) DIA
less suffix -R	7 3/4(195) DIA

Stop of Speedi-Set Gasket.

▲ Same for Caulk, NO-HUB and Speedi-Set, 4 1/4(110) for Threaded.

A SIZE	02 (50)	03 (75)	04 (100)
B	4 1/2 (115)	4 (100)	3 1/2 (89)

**REGULARLY FURNISHED:**

Duco Cast Iron Body with Combined Flashing Clamp and Gravel Stop with Polyethylene Dome.

**VARIATIONS:**

- Expansion Joint (Specify Fig. 1710) (Fig. 1330 only)
- Extension -E (Specify Height)
- 2"(51) High Water Dam -WD
- "L" Shaped Underdeck Clamp -CL
- L Speedi-Set Service Weight (Fig. 1330 only)
- LXH Speedi-Set Extra Heavy (Fig. 1330 only)
- NO-HUB Adaptor (Specify Fig. 2646Y) (Fig. 1340 only)
- Secondary Flashing Clamp -C2
- Sump Receiver -R
- Underdeck Clamp -C
- Vandal Proof Dome -U
- T Threaded Outlet

**OPTIONAL MATERIALS:**

- Aluminum Dome -AD
- Cast Iron Dome -CID
- Galvanized Cast Iron Body & Collar -G
- Galvanized Cast Iron Dome -CIDG
- Rough Bronze Dome -RBD

**NOTE:** Dimensions shown in parentheses are in millimeters.

DRAWING NUMBER  
S1330

SIZE  
A

SCALE:  
NONE

DATE:  
5-24-85

APPROVED BY:  
TD

CHECKED BY:  
TD

DRAWN BY:  
TD

1330, 1340

FIGURE NUMBER

WE CAN ASSUME NO RESPONSIBILITY FOR USE OF SUPERSEDED OR VOID DATA

DIMENSIONS ARE SUBJECT TO MANUFACTURERS TOLERANCE AND CHANGE WITHOUT NOTICE

J	7-30-19	Removed NOTE	MW	CL	WEIGHT POUNDS	VOLUME CUBIC FEET	FIGURE NUMBER
H	11-13-15	Added Flow Rate Note	TBW	BW			
G	11-1-02	Rev. "V" Notch	RN	BS			
F	5-26-99	Rev. Opt. Mat.	CMD				
REV.	DATE	DESCRIPTION	BY	CKD. BY			

**1330, 1340**