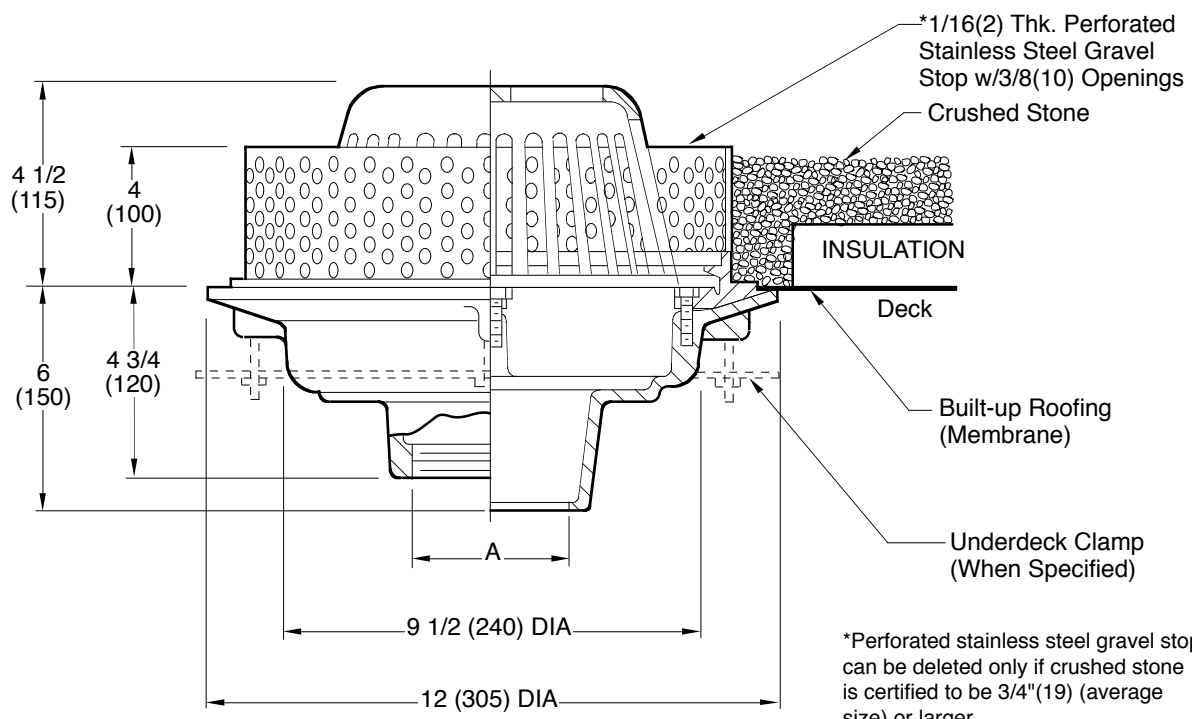


ROOF DRAINS

FOR INSULATED "BUILT-UP" MEMBRANE ROOFS



A (Pipe Size) = 02(50), 03(75), 04(100), 05(125) or 06(150)

- Fig. 1311C CAULK OUTLET
- Fig. 1311T THREADED OUTLET

recommended deck opening

with suffix -R	13(330) DIA
less suffix -R	11(280) DIA

REGULARLY FURNISHED:
 Duco Cast Iron Body with Flashing Clamp, 1/16"(2) Thick, 4"(100) High Stainless Steel Perforated Gravel Stop with 3/8"(10) Dia. Openings and Polyethylene Dome.

- VARIATIONS:**
- Expansion Joint (Specify Fig. 1710)
 - Extension (Specify Height) -E
 - Higher Gravel Stop -HGS (Specify Height)
 - Y NO-HUB
 - L Speedi-Set Service Weight 02(50), 03(80) & 04"(100) sizes only
 - LXH Speedi-Set Extra Heavy 02(50), 03(80) & 04"(100) sizes only
 - Sump Receiver -R
 - Underdeck Clamp -C

- OPTIONAL MATERIALS:**
- Aluminum Dome -AD
 - Cast Iron Dome -CID
 - Galvanized Cast Iron -G
 - Rough Bronze Dome -RBD

NOTE: Dimensions shown in parentheses are in millimeters.

DRAWING NUMBER: S1311
 SIZE: A
 SCALE: NONE
 DATE: 2-1-82
 APPROVED BY: KG
 CHECKED BY: JM
 DRAWN BY: KG
 FIGURE NUMBER: 1311

WE CAN ASSUME NO RESPONSIBILITY FOR USE OF SUPERSEDED OR VOID DATA

F	7-30-19	Removed NOTE	MW	CL		
E	11-13-15	Added Flow Rate Note	TBW	BW	WEIGHT	VOLUME
D	5-9-96	Submittal Update	EMB	BS	POUNDS	CUBIC FEET
C	1-6-88	Added -94 to Var	CMB	TD		FIGURE NUMBER
REV.	DATE	DESCRIPTION	BY	CKD. BY		1311