

J

SMITH® JAY R. SMITH MFG. CO.®
 MEMBER OF MORRIS GROUP INTERNATIONAL
 POST OFFICE BOX 3237
 MONTGOMERY, ALABAMA 36109-0237 (USA)
 TEL: 334-277-8520 FAX: 334-272-7396 www.jrsmith.com

ASPE **PD** **ICC**
 MEMBER OF:

LOCATION

DRAWING NUMBER
S1110, 1120

SIZE
A

SCALE:
NONE

DATE:
5-27-70

APPROVED BY:

CHECKED BY:
BH

DRAWN BY:
JLS

1110, 1120

FIGURE NUMBER

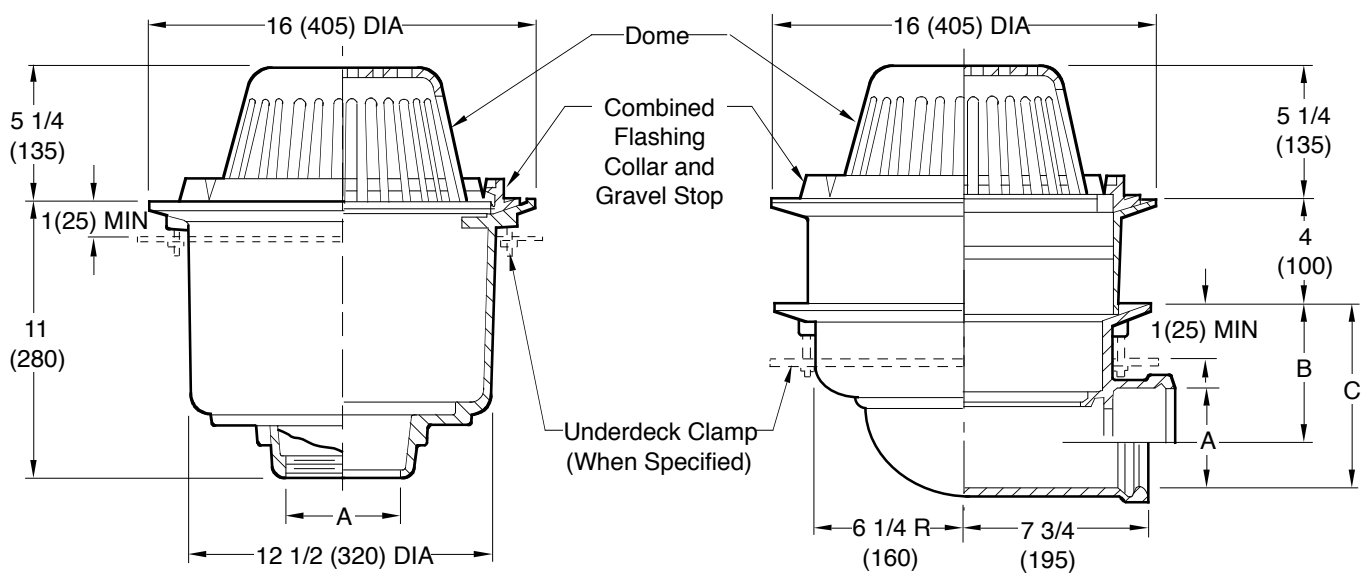
WE CAN ASSUME NO RESPONSIBILITY FOR USE OF SUPERSEDED OR VOID DATA
DIMENSIONS ARE SUBJECT TO MANUFACTURERS TOLERANCE AND CHANGE WITHOUT NOTICE

DEEP SUMP HEAVY DOWNPOUR ROOF DRAINS

16" (405) DIAMETER - LOW PROFILE DOME

FUNCTION: Used on flat roofs of any construction in areas where unusually heavy rains occur. Deep sump drains excess water and allows entrapped air to escape before entering leaders.

Free Area
102.5 SQ IN
(661) SQ CM



A (Pipe Size) 02(50), 03(75), 04(100), 05(125), or 06(150)

- Fig. 1110C . . . CAULK OUTLET
- Fig. 1110T . . . THREADED OUTLET
- Fig. 1120T . . . THREADED OUTLET
- Fig. 1120C . . . CAULK OUTLET

NOTE: 02(50), 03(75), 04(100) sizes requires a transition collar (not shown in above illustration) which fits between the body & collar. Above Illustration is typical for the 05"(125) & 06"(150) sizes.

recommended deck opening	
with suffix -R	17 (430) DIA
less suffix -R	14 (355) DIA

A	02(50)	03(75)	04(100)	05(125)	06(150)
B	6 7/8(175)	6 3/8(162)	5 7/8(149)	5(125)	4 1/2(115)
C	9(230)		8 1/2(215)		

REGULARLY FURNISHED:
Duco Cast Iron Body with Combined Flashing Collar and Gravel Stop with Polyethylene Dome.

- VARIATIONS:**
- Expansion Joint (Specify Fig. 1710)
 - Extension (Specify Height) -E
 - Sump Receiver -R
 - Underdeck Clamp -C

- OPTIONAL MATERIALS:**
- ▲ Aluminum Dome -AD
 - ▲ Cast Iron Dome -CID
 - Galvanized -G
 - ▲ Rough Bronze Dome -RBD

▲ **Optional domes' free area are as follows:**
Aluminum 98 (632)
Cast Iron 80 (516)
Bronze 95 (613)

NOTE: Dimensions shown in parentheses are in millimeters.

J	7-30-19	Removed NOTE	MW	CL
H	11-12-15	Added Flow Rate Note	TBW	BW
G	06/04/09	Added Optional Dome Notes	JJ	C
F	5-3-96	Submittal Update	EMB	BS
REV.	DATE	DESCRIPTION	BY	CKD. BY

WEIGHT POUNDS	VOLUME CUBIC FEET
---------------	-------------------

FIGURE NUMBER
1110, 1120