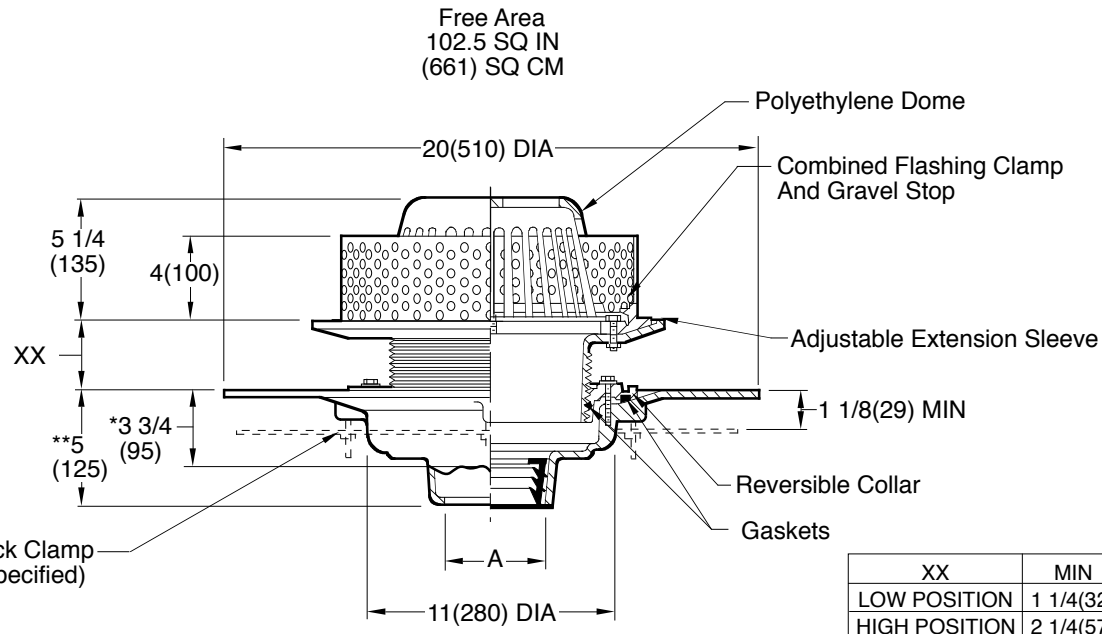


# ROOF DRAINS

## SPECIAL ROOF APPLICATIONS

**FUNCTION:** Used on roof systems where the insulated membrane assembly method of waterproofing is provided, using built-up felt and asphalt. The adjustable extension sleeve permits adjustment from a min. of 1 1/4"(32) to max. of 4 "(100), easily accommodating 2 3/4"(70) of varying insulation thicknesses. The positive threading allows smooth perimeter movement and circumferential support of the top of any adjusted elevation. A 4"(100) high perforated stainless steel gravel guard is supplied to retain the crushed gravel used in flat roof construction.



	XX	MIN	MAX
LOW POSITION	1 1/4(32)	2 1/2(64)	
HIGH POSITION	2 1/4(57)	4(100)	

A (Pipe Size) = 02(50), 03(75), 04(100), 05(125) or 06(150)

\*This dimension to internal stop of Speedi-Set Gasket  
 \*\*Same for Caulk, NO-HUB and Speedi-Set, 3 3/4(95) for Threaded

**NOTE:** Recommended deck opening 14 3/4"(375).

**REGULARLY FURNISHED:**  
 Duco Cast Iron Body with Adjustable Extension Sleeve, 1/16"(2) Thick 4"(100) High Stainless Steel Perforated Gravel Guard with 3/8"(10) DIA Openings, Flashing Clamp and Polyethylene Dome.

**NOTE:** Dimensions shown in parentheses are in millimeters.

- VARIATIONS:**
- Expansion Joint (Specify Fig. 1710)
  - Higher Gravel Stop (Specify) -HGS
  - "L" Shaped Underdeck Clamp -CL
  - L Speedi-Set Service Weight 02(50), 03(80) & 04"(100) sizes only
  - LXH Speedi-Set Extra Heavy 02(50), 03(80) & 04"(100) sizes only
  - Underdeck Clamp -C
  - Vandal Proof Dome -U
  - T Threaded Outlet

- OPTIONAL MATERIALS:**
- ▲  Aluminum Dome -AD
  - ▲  Cast Iron Dome -CID
  - ▲  Galvanized Cast Iron -G
  - ▲  Rough Bronze Dome -RBD

▲ **Optional domes' free area are as follows:**  
 Aluminum 98 (632)  
 Cast Iron 80 (516)  
 Bronze 95 (613)

DRAWING NUMBER **S1039**  
 SIZE **A**  
 SCALE: **NONE**  
 DATE: **10-8-87**  
 APPROVED BY: **CR**  
 CHECKED BY: **BS**  
 DRAWN BY: **EMB**  
**1039**  
 FIGURE NUMBER

WE CAN ASSUME NO RESPONSIBILITY FOR USE OF SUPERSEDED OR VOID DATA  
 DIMENSIONS ARE SUBJECT TO MANUFACTURERS TOLERANCE AND CHANGE WITHOUT NOTICE

REV.	DATE	DESCRIPTION	BY	CKD. BY	WEIGHT POUNDS	VOLUME CUBIC FEET	FIGURE NUMBER
	7-30-19	Removed NOTE	MW	CL			<b>1039</b>
	9-17-15	Added Flow Rate Note	TBW	BW			
	06/04/09	Added Optional Dome Notes	JJ	CL			
	6-506	Revised Dim	TBW	AM			