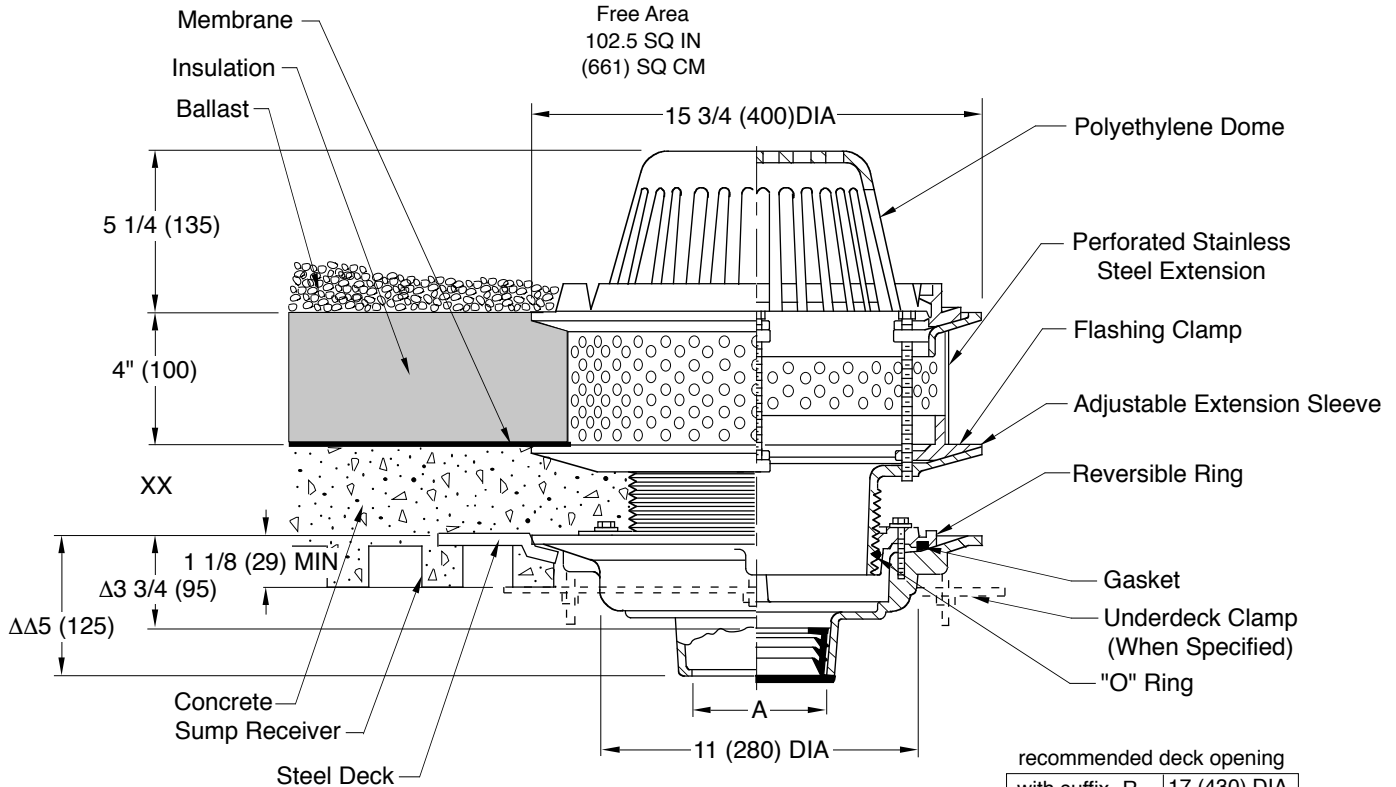


ROOF DRAINS

SPECIAL ROOF APPLICATIONS

FUNCTION: Used on roof systems where the insulated membrane assembly method of waterproofing is installed using a liquid membrane. The adjustable extension sleeve permits adjustment from a min. of 1 1/4(32) to a max of 4(100) easily accommodating 2 3/4"(70) of varying insulation thicknesses. The positive threading allows smooth perimeter movement and circumferential support of the top at any adjusted elevation. A perforated stainless steel extension is supplied to retain the crushed gravel used in flat roof construction.



Δ This Dimension to Internal Stop of Speedi-Set Gasket.
 ΔΔ Same for caulk, NO-HUB and Speedi-Set, 3 3/4 (95) for Threaded.
NOTE: Dimensions shown in parentheses are in millimeters.

A (Pipe Size) = 02(50), 03(75), 04(100), 05(125) or 06(150)

Fig. 1037C ... CAULK OUTLET
 Fig. 1037Y ... NO-HUB OUTLET

	XX	MIN	MAX
Low Position	1 1/4 (32)	2 1/2 (64)	
High Position	2 1/4 (57)	4 (100)	

REGULARLY FURNISHED:
 Duco Cast Iron Body with Adjustable Extension Sleeve, Perforated Stainless Steel Extension, Combined Flashing Clamp and Gravel Stop, and Polyethylene Dome

- VARIATIONS:**
- Expansion Joint (Specify Fig. 1710) (Fig. 1010 only)
 - Higher Gravel Stop (Specify Height) -HGS
 - "L" Shaped Underdeck Clamp -CL
 - L Speedi-Set Service Weight
02(50), 03(80), and 04"(100) sizes only (Fig. 1010 only)
 - LXH Speedi-Set Extra Heavy
02(50), 03(80), and 04"(100) sizes only (Fig. 1010 only)
 - Sump Receiver -R
 - Underdeck Clamp -C
 - Vandal Proof Dome -U
 - T Threaded Outlet

- OPTIONAL MATERIALS:**
- ▲ Aluminum Dome -AD
 - ▲ Cast Iron Dome -CID
 - Galvanized Cast Iron -G
 - ▲ Rough Bronze Dome -RBD

▲ **Optional domes' free area are as follows:**

Aluminum	98 (632)
Cast Iron	80 (516)
Bronze	95 (613)

DRAWING NUMBER
S 1037 (-R-C)

SIZE
A

SCALE:
NONE

DATE:
9-20-88

APPROVED BY:
CR

CHECKED BY:
TD

DRAWN BY:
EMB

1037 (-R-C)

WE CAN ASSUME NO RESPONSIBILITY FOR USE OF SUPERSEDED OR VOID DATA

DIMENSIONS ARE SUBJECT TO MANUFACTURERS TOLERANCE AND CHANGE WITHOUT NOTICE

E	7-30-19	Removed NOTE Added Flow Rate Note Added Optional Dome Notes Revised Dim	MW	CL	WEIGHT POUNDS	VOLUME CUBIC FEET	FIGURE NUMBER 1037 (-R-C)
D	9-17-15		TBW	BW			
C	06/04/09		JJ	CL			
B	6-5-06		TBW	AM			
REV.	DATE	DESCRIPTION	BY	CKD. BY			