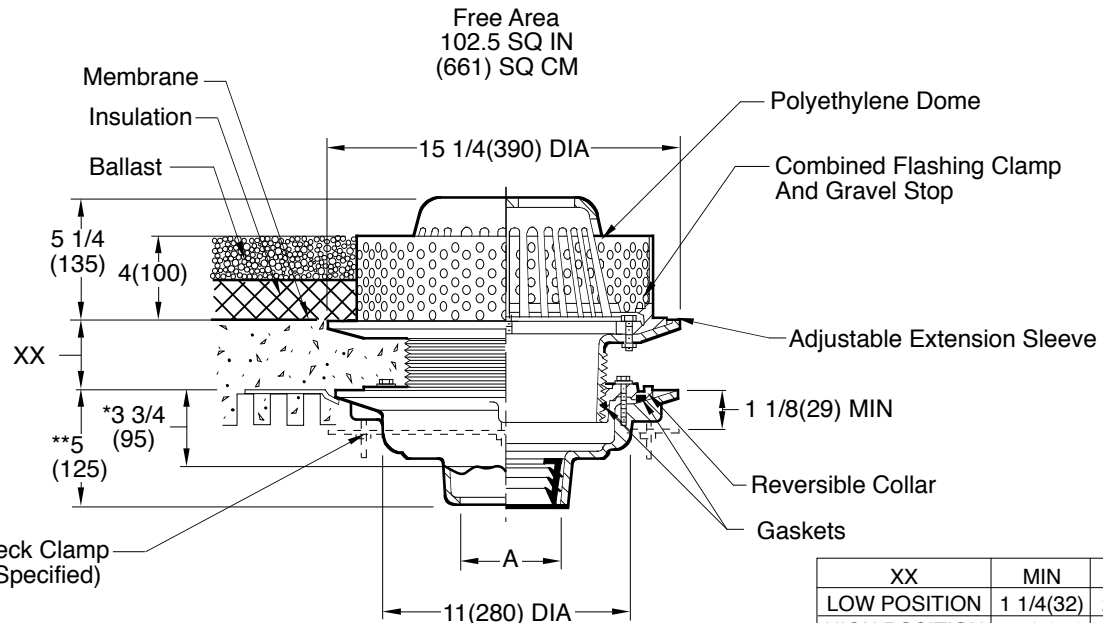


ROOF DRAINS

SPECIAL ROOF APPLICATIONS

FUNCTION: Used on roof systems where the insulated membrane assembly method of waterproofing is provided, using built-up felt and asphalt. The adjustable extension sleeve permits adjustment from a min. of 1 1/4"(32) to max. of 4"(100), easily accommodating 2 3/4"(70) of varying insulation thicknesses. The positive threading allows smooth perimeter movement and circumferential support of the top of any adjusted elevation. A 4"(100) high perforated stainless steel gravel guard is supplied to retain the crushed gravel used in flat roof construction.



	XX	MIN	MAX
LOW POSITION	1 1/4(32)	2 1/2(64)	
HIGH POSITION	2 1/4(57)	4 (100)	

* This dimension to internal stop of Speedi-Set Gasket
 **Same for Caulk, NO-HUB and Speedi-Set, 3 3/4(95) for Threaded

A (Pipe Size) = 02(50), 03(75), 04(100), 05(125) or 06(150)

- Fig. 1031C (-R-C) CAULK OUTLET
- Fig. 1031Y (-R-C) NO-HUB OUTLET

Recommended Deck Opening

With Suffix -R	17(430) DIA
Less Suffix -R	14(355) DIA

REGULARLY FURNISHED:
 Duco Cast Iron Body with Adjustable Extension Sleeve, 1/16"(2) thick 4" (100) high Stainless Steel Perforated Gravel Guard with 3/8"(10) DIA Openings, Flashing Clamp and Polyethylene Dome.

- VARIATIONS:**
- Expansion Joint (Specify Fig. 1710)
 - Higher Gravel Stop (Specify) -HGS
 - "L" Shaped Underdeck Clamp -CL
 - L Speedi-Set Service Weight 02(50), 03(80) & 04"(100) sizes only
 - LXH Speedi-Set Extra Heavy 02(50), 03(80) & 04"(100) sizes only
 - Sump Receiver -R
 - Underdeck Clamp -C
 - Vandal Proof Dome -U
 - T Threaded Outlet

- OPTIONAL MATERIALS:**
- ▲ Aluminum Dome -AD
 - ▲ Cast Iron Dome -CID
 - ▲ Galvanized Cast Iron -G
 - ▲ Rough Bronze Dome -RBD

▲Optional domes' free area are as follows:
 Aluminum 98 (632)
 Cast Iron 80 (516)
 Bronze 95 (613)

NOTE: Dimensions shown in parentheses are in millimeters.

DRAWING NUMBER: S1031 (-R-C)
 SIZE: A
 SCALE: NONE
 DATE: 9-20-88
 APPROVED BY: CR
 CHECKED BY: BS
 DRAWN BY: EMB
 FIGURE NUMBER: 1031 (-R-C)

WE CAN ASSUME NO RESPONSIBILITY FOR USE OF SUPERSEDED OR VOID DATA

REV.	DATE	DESCRIPTION	BY	CKD. BY	WEIGHT POUNDS	VOLUME CUBIC FEET	FIGURE NUMBER
	7-30-19	Removed NOTE	MW	CL			1031(-R-C)
	9-17-15	Added Flow Rate Note	TBW	BW			
	06/04/09	Added Optional Dome Notes	JJ	CL			
	6-5-06	Revised Dim	TBW	AM			