

F

SMITH® JAY R. SMITH MFG. CO.®
 MEMBER OF MORRIS GROUP INTERNATIONAL
 POST OFFICE BOX 3237
 MONTGOMERY, ALABAMA 36109-0237 (USA)
 TEL: 334-277-8520 FAX: 888-377-7818 www.jrsmith.com

ASPE MEMBER OF: **PDPI** **IBS**

LOCATION

DRAWING NUMBER
S1016/1026

SIZE
A

SCALE:
NONE

DATE:
2-21-85

APPROVED BY:
CR

CHECKED BY:
TD

DRAWN BY:
EMB

FIGURE NUMBER
1016/1026

WE CAN ASSUME NO RESPONSIBILITY FOR USE OF SUPERSEDED OR VOID DATA

DIMENSIONS ARE SUBJECT TO MANUFACTURERS TOLERANCE AND CHANGE WITHOUT NOTICE

RAINTROL® ROOF DRAIN

ADJUSTABLE "FLOW RATE CONTROL" DESIGN FOR SLOPED ROOF CONSTRUCTION

WITH ADJUSTABLE TOP

FUNCTION: Used to control the flow of rain water off a roof. Trapezoidal weirs limit the flow to the leaders. The adjustable top permits adjustment to roof insulation thickness without disturbing the drain body or any existing or temporary roofing. Large clamping surface holds flashing and roof materials without puncturing.

Free Area
102.5 SQ IN
(661) SQ CM

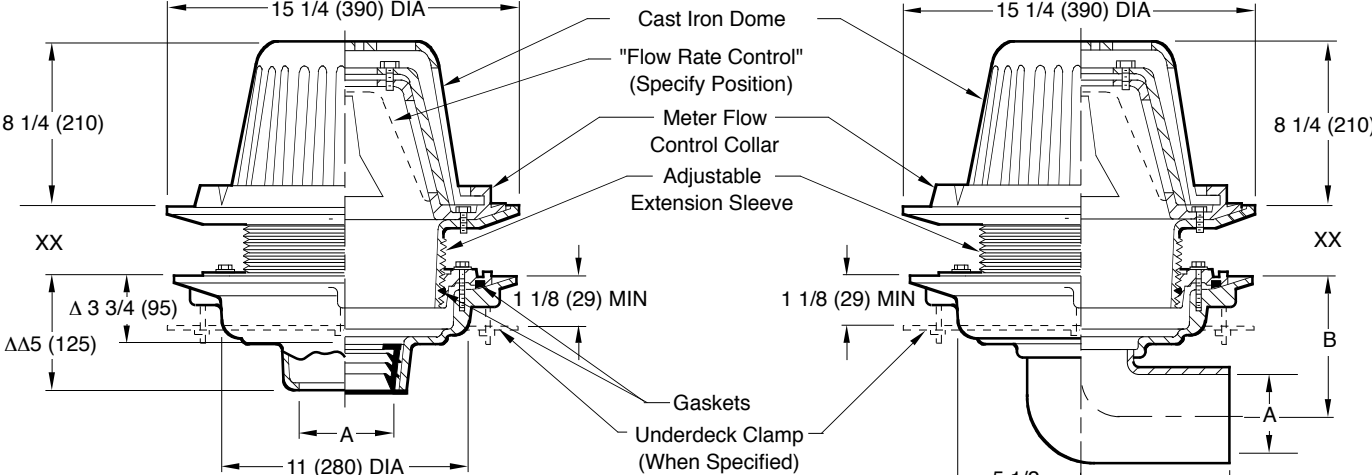


Fig. 1016C CAULK OUTLET
 Fig. 1016Y..... NO-HUB OUTLET

Fig. 1026S..... SPIGOT OUTLET
 Fig. 1026T..... THREADED OUTLET

recommended deck opening	
with suffix -R	17 (430) DIA
less suffix -R	14 (355) DIA

XX	MIN	MAX
Low Position	1 1/4 (32)	2 1/2 (64)
High Position	2 1/4 (57)	4 (100)

ALWAYS SPECIFY NUMBER OF WEIR OPENINGS

(-WR1)	(-WR2)	(-WR3)	(-WR4)
--------	--------	--------	--------

A SIZE	02(50)	03(75)	04(100)
B	6(150)	6 1/2(165)	7 (180)

***NOTE:**
 (-WR1) 1 WEIR OPENING
 (-WR2) 2 WEIR OPENING
 (-WR3) 3 WEIR OPENING
 (-WR4) 4 WEIR OPENING

*This dimension to internal stop of Speedi-Set Gasket
 **Same for Caulk, NO-HUB and Speedi-Set, 3 3/4 (95) for Threaded

REGULARLY FURNISHED:
 Duco Cast Iron Body with Adjustable Extension Sleeve, Combined Flashing Clamp and Gravel Stop with Adjustable "Flow Rate Control" Assembly and Dome

- VARIATIONS:**
- Expansion Joint (Specify Fig. 1710)
 - "L" Shaped Underdeck Clamp -CL
 - L Speedi-Set Service Weight
02(50), 03(75) & 04"(100) sizes only
 - LXH Speedi-Set Extra Heavy
02(50), 03(75) & 04"(100) sizes only
 - NO-HUB Adaptor (Fig. 1026 only)
 - Sump Receiver -R
 - Underdeck Clamp -C
 - T Threaded Outlet

- OPTIONAL MATERIALS:**
- Aluminum Dome -AD
 - Galvanized Cast Iron -G

NOTE: Please contact the factory or your local Representative if more information on selection, sizing and placement of our Raintrol® roof drains is required.

NOTE: Dimensions shown in parentheses are in millimeters.

F	2-9-22	Revised Optional Materials	KK	CL	WEIGHT POUNDS	VOLUME CUBIC FEET	FIGURE NUMBER 1016/1026
E	4-25-16	Revised Table	TBW	CL			
D	9-10-12	Revised Table	TBW	BW			
C	6-5-06	Revised Dim	TBW	AM			
REV.	DATE	DESCRIPTION	BY	CKD. BY			