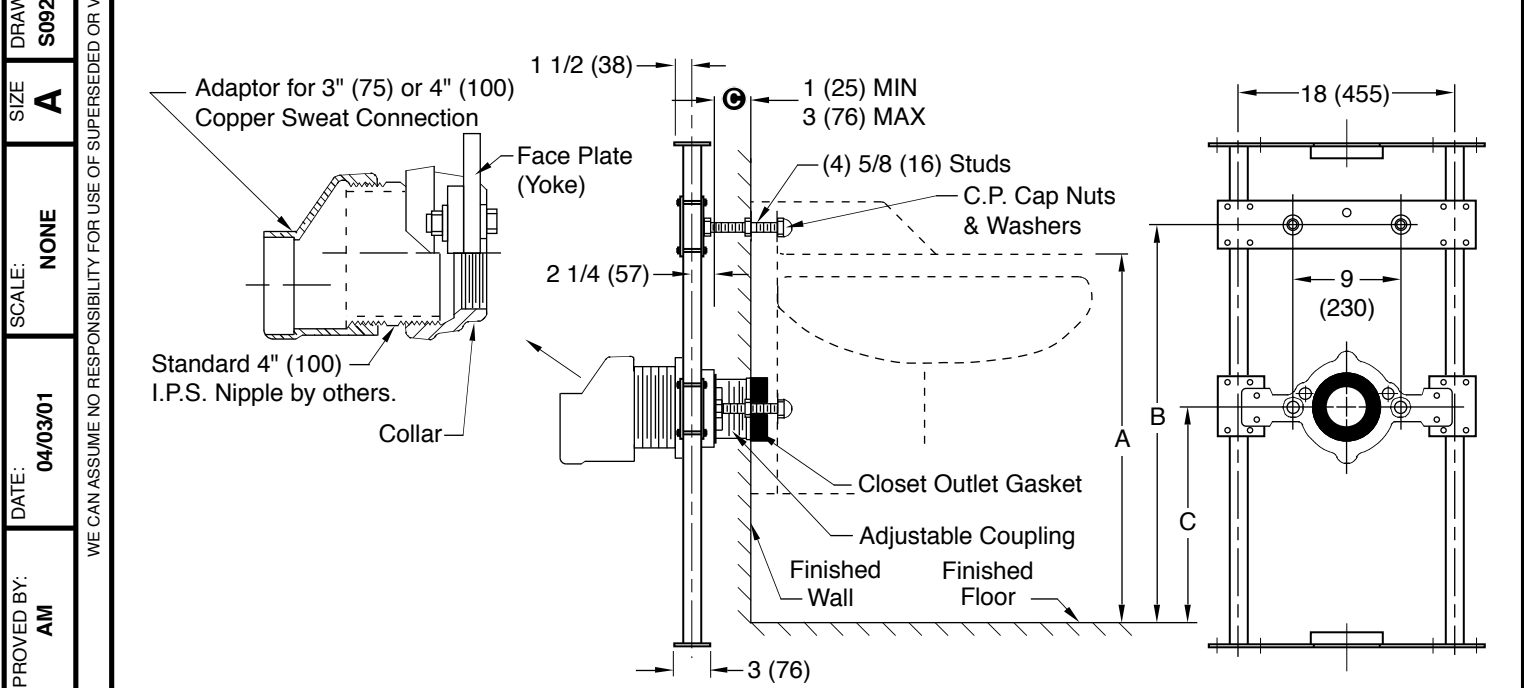


LABOR SAVER® HEAVY DUTY FIXTURE SUPPORT FLOOR MOUNTED

WITH SUPPORTING STUDS, ADJUSTABLE COUPLING AND ADAPTOR FOR USE WITH 3"(75) OR 4"(100) D.W.V. COPPER WASTE SYSTEM



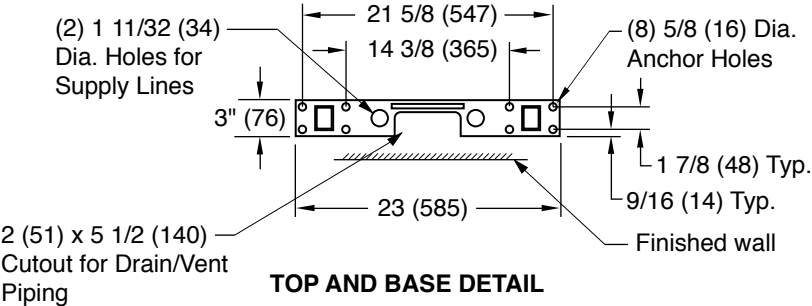
NOTE: The rough-in dimensions listed on this drawing are based on current information available to Jay R. Smith by the fixture manufacturers. We recommend that you verify these dimensions with the fixture manufacturer. We will not accept responsibility for rough-in dimension changes by the fixture manufacturer.

NOTE: *This dimension includes a wall thickness of 1/2". For greater wall thickness, specify centerline of upright to finished wall dimension.

NOTE: Dimensions shown in parentheses are in millimeters.

Ⓢ This Dimension Can be Increased When Fixture Support is to be Installed Behind the Wall (Specify When Required and Wall Thickness.)

Fig. 0924 (-C) . . . FOR BACK OUTLET FLUSHING RIM SERVICE SINKS



ROUGHING-IN TABLE

FIXTURE MFG.	NAME	NUMBER	SIZE	A	B	C

DRAWING NUMBER: S0924 (-C) -3"(80) or -4"(100)

SIZE: A

SCALE: NONE

DATE: 04/03/01

APPROVED BY: AM

CHECKED BY: CR

DRAWN BY: JJ

FIGURE NUMBER: 0924 (-C) -3"(80) or -4"(100)

DIMENSIONS ARE SUBJECT TO MANUFACTURERS TOLERANCE AND CHANGE WITHOUT NOTICE

WE CAN ASSUME NO RESPONSIBILITY FOR USE OF SUPERSEDED OR VOID DATA

D

C

B

A

REV.

DATE

DESCRIPTION

BY

CKD. BY

WEIGHT POUNDS

VOLUME CUBIC FEET

FIGURE NUMBER

0924 (-C)

-3"(80) or -4"(100)