

D

SMITH® JAY R. SMITH MFG. CO.®
 MEMBER OF MORRIS GROUP INTERNATIONAL
 POST OFFICE BOX 3237
 MONTGOMERY, ALABAMA 36109-0237 (USA)
 TEL: 334-277-8520 FAX: 334-272-7396 www.jrsmith.com



LOCATION

DRINKING FOUNTAIN SUPPORT

DRAWING NUMBER
S0823 (B)

SIZE
A

SCALE:
NONE

DATE:
7-1-63

APPROVED BY:

CHECKED BY:
JL

DRAWN BY:
SL

WE CAN ASSUME NO RESPONSIBILITY FOR USE OF SUPERSEDED OR VOID DATA

DIMENSIONS ARE SUBJECT TO MANUFACTURERS TOLERANCE AND CHANGE WITHOUT NOTICE

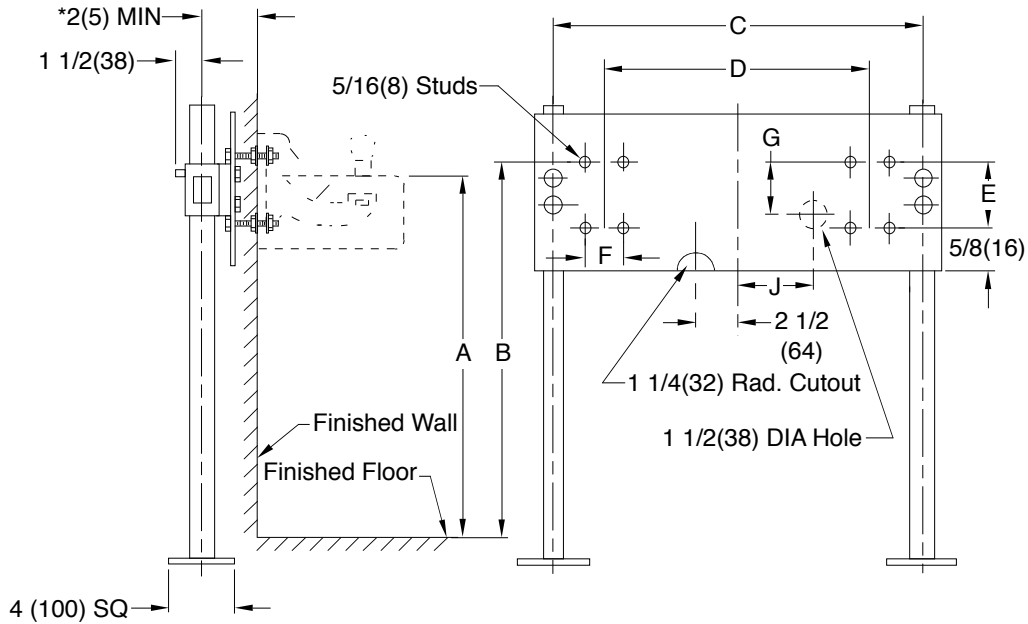
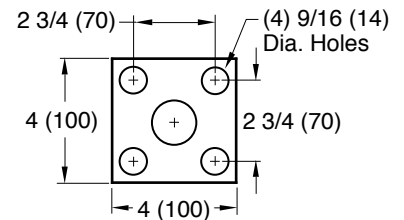


Fig. 0823 . . . FOR MULTIPLE DRINKING FOUNTAINS WITH CONCEALED WALL BRACKETS

*This dimension can be increased when fixture support is to be installed behind the wall (specify when required and wall thickness).

NOTE: For metal stud wall construction, specify Suffix -M31 rectangular steel upright with welded bases for greater strength.



BASE DETAIL

ROUGHING-IN TABLE

| FIXTURE NAME | | NUMBER | | SIZE | | | |
|--------------|---|--------|---|------|---|---|---|
| A | B | C | D | E | F | G | J |
| | | | | | | | |

NOTE: The rough-in dimensions listed on this drawing are based on current information available to Jay R. Smith by the fixture manufacturers. We recommend that you verify these dimensions with the fixture manufacturer. We will not accept responsibility for rough-in dimension changes by the fixture manufacturer.

0823

FIGURE NUMBER

| | | | | |
|------|----------|---|-----|---------|
| D | 9-23-10 | Replace Base Detail / added ® Revised Base Plate Submittal Update | RN | CL |
| B | 01/20/00 | | JJ | |
| A | 8-17-93 | | EMB | BS |
| REV. | DATE | DESCRIPTION | BY | CKD. BY |

| | |
|---------------|-------------------|
| WEIGHT POUNDS | VOLUME CUBIC FEET |
| | |

FIGURE NUMBER

0823