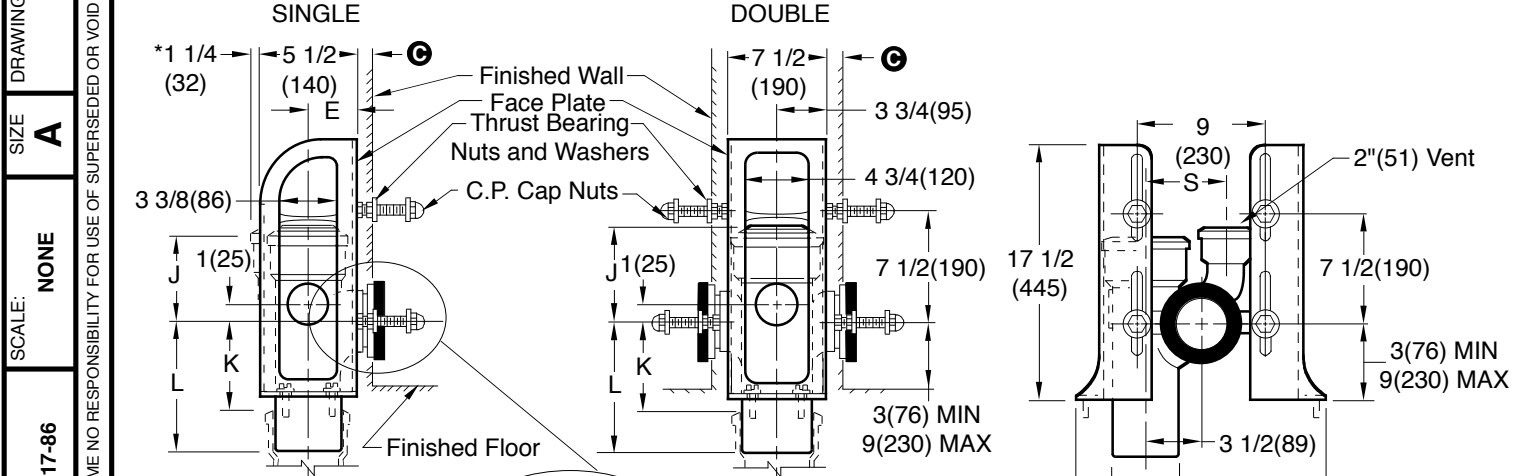


# COMPACT FIXTURE SUPPORTS

## FOR SIPHON JET WATER CLOSETS WITH VERTICAL OFFSET FITTINGS

### FLOOR-MOUNT FRAME FOR HUB & SPIGOT SYSTEMS



- Fig. 0550FR Side View**
- Fig. 0550FD Side View**
- Fig. 0550FL3 Front View**
- Fig. 0550FL3 ..... 3"(75) CAULK Left Hand
  - Fig. 0550FL4 ..... 4"(100) CAULK Left Hand
  - Fig. 0550FR3 ..... 3"(75) CAULK Right Hand
  - Fig. 0550FR4 ..... 4"(100) CAULK Right Hand
  - Fig. 0550FD3 ..... 3"(75) CAULK Double
  - Fig. 0550FD4 ..... 4"(100) CAULK Double
- \*Hub extends beyond frame  
 1 1/4"(32) for 4"(100) cast iron hub.

A	E	J	K	L	S
3(75)	3(76)	6(150)	5 1/4(135)	8(205)	5 1/4(135)
4(100)	3 3/4(95)	6(150)	5(125)	8(205)	5 1/4(135)

#### INSTALLATION INSTRUCTIONS

- A. The center of the stack should be located by the "E" dimension shown on the table. "E" dimension for 0550FD is 3 3/4(95).
- B. To determine the height of the stack in relation to the finished floor, subtract the closet outlet c/L dimension from the "K" dimension.
- C. The fitting should now be caulked into the stack.
- D. Assemble the faceplates temporarily to the fitting, mark the location of the bolt holes in the slab, and then secure faceplates to the floor.
- E. Faceplates are fastened to the arms of the adaptor by means of the fixture studs, nuts and washers provided.
- F. Thread locknut on male thread of adjustable coupling approximately 1"(25) and push "O"-Ring against locknut.
- G. Apply No. 90 Smith Seal to male threads on coupling. Install coupling and adjust it to extend 5/16"(8) beyond finished wall. Thread locknut snugly.
- H. Assemble the bearing nuts and washers to the fixture supporting studs. The fixture studs should extend 2 1/4"(57) beyond finished wall.
- I. Adjust bearing nuts so that washers extend 1/16"(2) beyond finished wall.
- J. After wall is erected, remove any plaster grout touching the fixture studs, bearing nuts washers and coupling.
- K. Place gasket in closet recess and set closet on studs protruding from wall making sure that closet outlet is centered on coupling.
- L. Place fiber washers on studs. Apply the two bottom and top left cap nuts, tighten securely. Apply the top right cap nut hand tight and snug up 1/4 turn with wrench.

**NOTE:** Dimensions shown in parentheses are in millimeters.

<b>0550F</b>	<b>E</b>	11-19-13	<b>Revised Dimensions, Notes</b> Revised Note Deleted 2" x 4" Added Millimeters	<b>TBW</b>	<b>CL</b>	<b>WEIGHT</b> POUNDS	<b>VOLUME</b> CUBIC FEET	<b>FIGURE NUMBER</b>  <b>0550F</b>
	<b>D</b>	8-26-05		<b>TBW</b>	<b>CL</b>			
	<b>C</b>	05/21/01		<b>JJ</b>	<b>CL</b>			
	<b>B</b>	8-7-96		<b>EMB</b>	<b>BS</b>			
<b>REV.</b>	<b>DATE</b>	<b>DESCRIPTION</b>		<b>BY</b>	<b>CKD. BY</b>			