

J  
DRAWING NUMBER S0548FP  
SIZE A  
SCALE: NONE  
DATE: 9-10-86  
APPROVED BY: CR  
CHECKED BY: JD  
DRAWN BY: CB  
FIGURE NUMBER 0548FP

WE CAN ASSUME NO RESPONSIBILITY FOR USE OF SUPERSEDED OR VOID DATA  
DIMENSIONS ARE SUBJECT TO MANUFACTURERS TOLERANCE AND CHANGE WITHOUT NOTICE

**SMITH® JAY R. SMITH MFG. CO.®**  
MEMBER OF MORRIS GROUP INTERNATIONAL  
POST OFFICE BOX 3237  
MONTGOMERY, ALABAMA 36109-0237 (USA)  
TEL: 334-277-8520 FAX: 334-272-7396 www.jrsmith.com



LOCATION

# COMPACT FIXTURE SUPPORTS WITHOUT WASTE FITTINGS FOR SIPHON JET WATER CLOSETS

## FLOOR-MOUNT FRAME

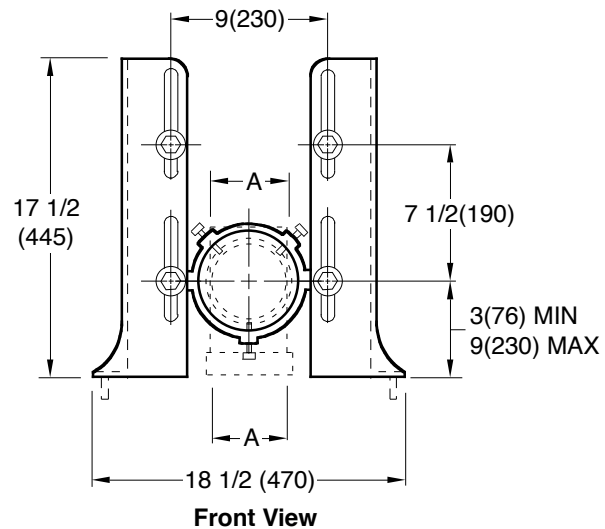
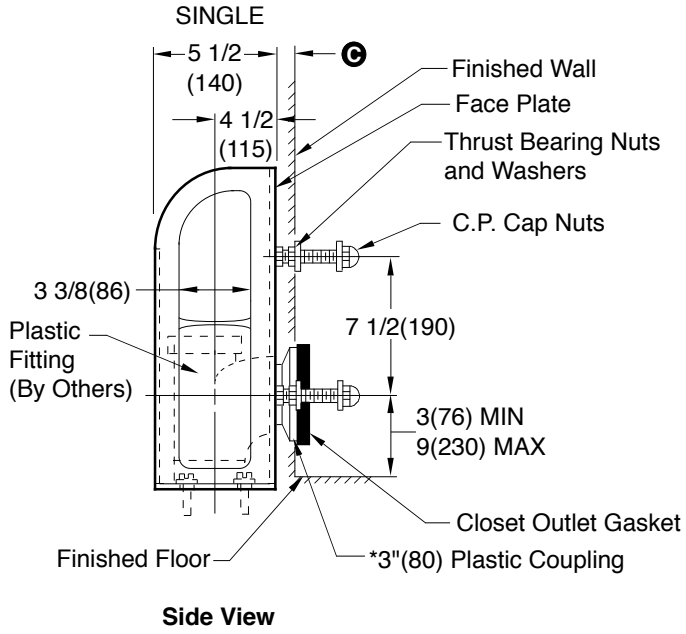


Fig. 0548FP . . . 3" (75) PLASTIC CONNECTION

- NOTES:**
1. Coupling should extend 5/16" (8) beyond finished wall.
  2. Base support must be firmly anchored to floor with four 1/2" (13) bolts provided by contractor.
  3. ⓐ 1/2" (13) MIN to 1 1/4" (32) MAX as furnished.
  4. ABS Regularly Furnished

## INSTALLATION INSTRUCTIONS

- A. The center of the stack should be located by the 4 1/2" (115) dimension shown above.
- B. Attach fitting adaptor to back of face plates with the fixture studs. Set center of adaptor at closet outlet c/L dimension to be used, then lock in place.
- C. Assemble fitting to the adaptor and lock in place with set screws.
- D. Place face plate assembly in proper position, mark location of the bolt holes in the slab, then secure face plates to the floor.
- E. Make up stack connection.
- F. Insert the coupling into the fitting and adjust it to extend 5/16" (8) beyond finished wall, then secure it to the fitting.
- G. Assemble the bearing nuts and washers to the fixture supporting studs. The fixture studs should extend 2 1/4" (57) beyond finished wall.
- H. Adjust bearing nuts so that washers extend 1/16" (2) beyond finished wall.
- I. After wall is erected, remove any plaster grout from fixture studs, bearing nuts, washers and coupling.
- J. Place gasket in closet recess and set closet on studs protruding from the wall, making sure that closet outlet is centered on coupling.
- K. Place fiber washers on studs. Apply the two bottom and top left cap nuts, tighten securely. Apply the top right cap nut hand tight and snug up 1/4 turn with wrench.

**NOTE:** Dimensions shown in parentheses are in millimeters.

REV.	DATE	DESCRIPTION	BY	CKD. BY	WEIGHT POUNDS	VOLUME CUBIC FEET	FIGURE NUMBER
J	11-19-13	Revised Dimensions, Notes	TBW	CL			<b>0548FP</b>
H	4-10-13	Remove Notes	TBW	CL			
G	8-26-05	Revised Note	TBW	CL			
F	05/21/01	Deleted 2" x 4"	JJ	CL			