

ADJUSTABLE FIXTURE SUPPORTS FOR SIPHON JET WATER CLOSETS - SHALLOW ROUGH-IN TYPE

NO-HUB VERTICAL FITTINGS WITH TWO SIDE INLETS

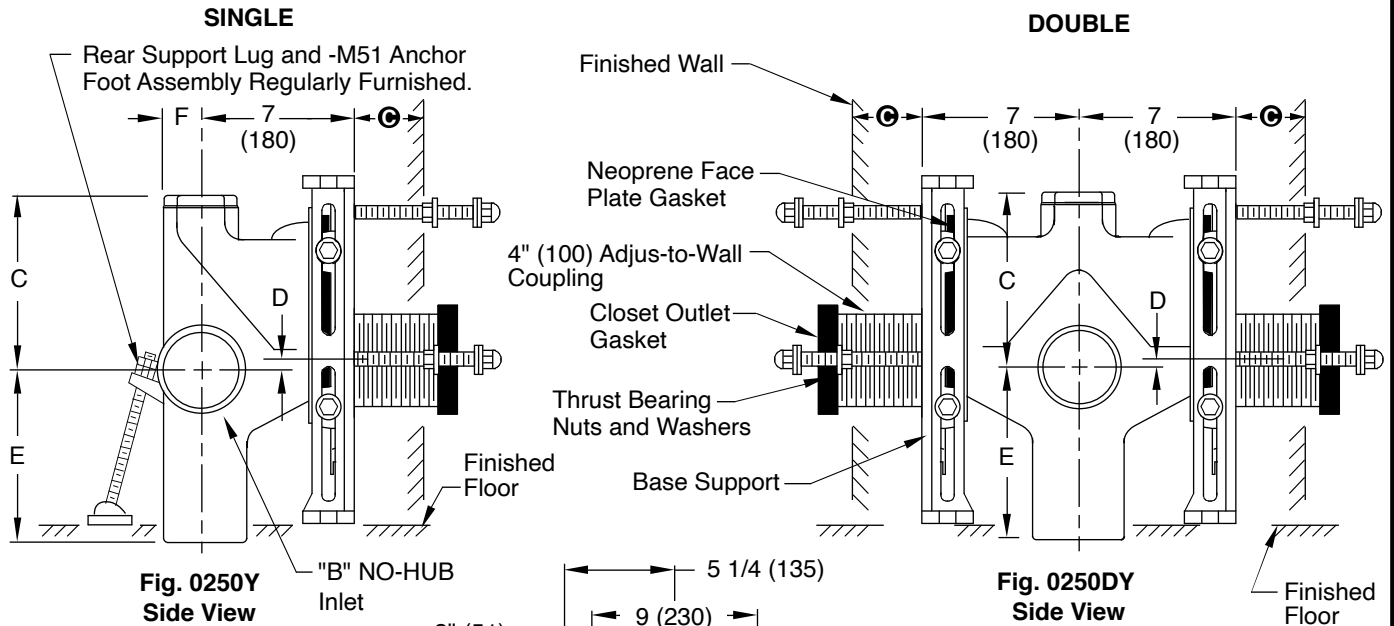
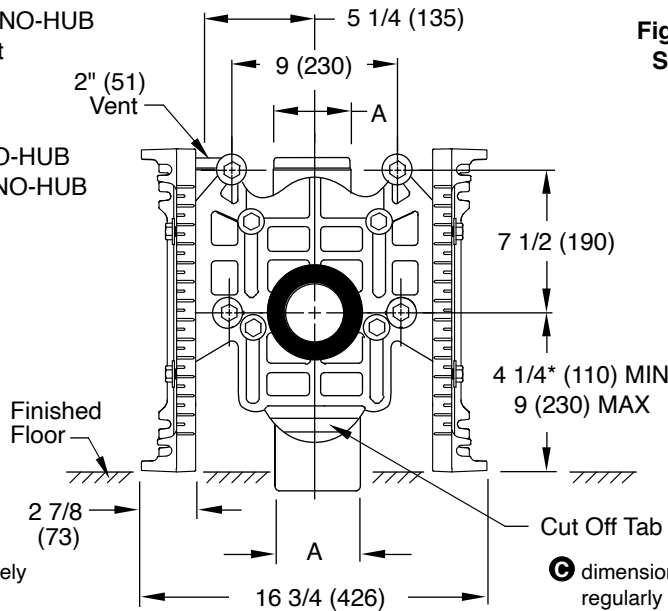


Fig. 0250Y-M58-M54. . .NO-HUB
 Fig. 0250DY-M58-M54. . .NO-HUB Double



Front View

⊙ dimension = 3 1/4" (83) - 9 3/4" (247) with regularly furnished 10" (255) nipple. The threaded end of nipple must be cut to specified length required by others.

- NOTE:** Base support must be securely anchored to floor with two 1/2" (13) bolts provided by contractor.
- NOTE:** Shallower minimum rough-in dimension to accommodate lower rough bowls available. Specify dimension required.
- NOTE:** ⌀ of stack to end of NO-HUB side inlet in 5" (125).
- NOTE:** Dimensions shown in parentheses are in millimeters.
- *NOTE:** 9" (230) core drilled hole is required for rough-in 4 1/4 (110) thru 6 1/2 (165).

A x B Size	C	D		E	F
		MIN	MAX		
4 (100) x 4 (100)	9 (230)	1 1/2 (38)	4 1/4 (110)	14 (355)	2 1/4 (57)
5 (125) x 4 (100)	11 1/2 (290)	1 1/2 (38)	4 1/4 (110)	11 1/2 (290)	2 3/4 (70)
5 (125) x 5 (125)	11 1/2 (290)	1 1/2 (38)	4 1/4 (110)	11 1/2 (290)	2 3/4 (70)
6 (150) x 4 (100)	11 1/2 (290)	1 1/2 (38)	4 1/4 (110)	11 1/2 (290)	3 1/4 (83)
6 (150) x 5 (125)	11 1/2 (290)	1 1/2 (38)	4 1/4 (110)	11 1/2 (290)	3 1/4 (83)

B
 DRAWING NUMBER
 S0250Y-M58-M54
 SIZE
 A
 SCALE:
 NONE
 DATE:
 9-11-08
 APPROVED BY:
 CL
 CHECKED BY:
 CL
 DRAWN BY:
 RN
 0250Y-M58-M54
 FIGURE NUMBER

WE CAN ASSUME NO RESPONSIBILITY FOR USE OF SUPERSEDED OR VOID DATA
 DIMENSIONS ARE SUBJECT TO MANUFACTURERS TOLERANCE AND CHANGE WITHOUT NOTICE

REV.	DATE	DESCRIPTION	BY	CKD. BY	WEIGHT POUNDS	VOLUME CUBIC FEET	FIGURE NUMBER
B	8-19-20	Rev. Draw./Dim: 16 7/16 - 16 3/4	MW	CL			0250Y-M58-M54
A	11/20/09	3/4 (19) was 1/2 (13)	JJ	CL			