

E
DRAWING NUMBER S0250Y (-M54)
SIZE A
SCALE: NONE
DATE: 1-30-96
APPROVED BY: CS
CHECKED BY: JCS
DRAWN BY: EMB
FIGURE NUMBER 0250Y (-M54)

SMITH® JAY R. SMITH MFG. CO.®
 MEMBER OF MORRIS GROUP INTERNATIONAL
 POST OFFICE BOX 3237
 MONTGOMERY, ALABAMA 36109-0237 (USA)
 TEL: 334-277-8520 FAX: 888-377-7818 www.jrsmith.com

ASPE
 PDI
 MEMBER OF:
 ASSHRAE

LOCATION

ADJUSTABLE FIXTURE SUPPORTS FOR SIPHON JET WATER CLOSETS - SHALLOW ROUGH-IN TYPE

NO-HUB VERTICAL FITTINGS WITH TWO SIDE INLETS

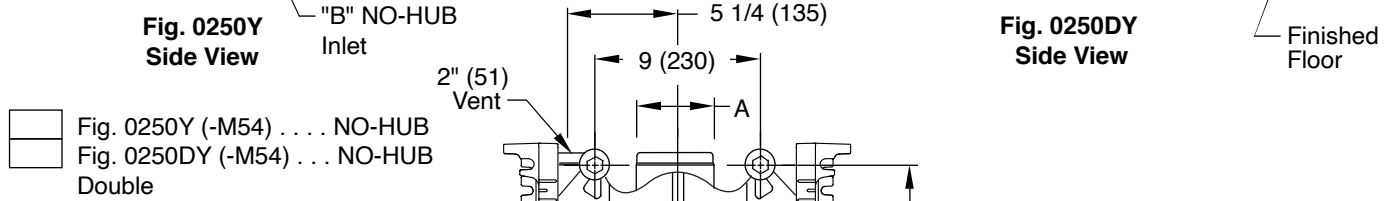
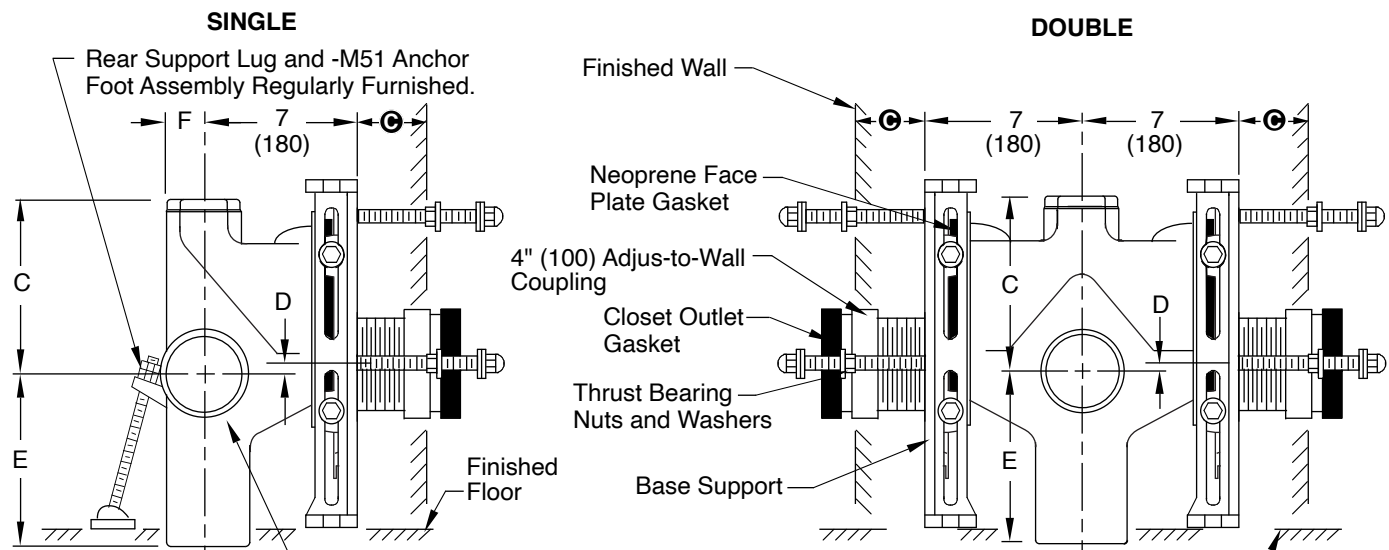


Fig. 0250Y (-M54) NO-HUB
 Fig. 0250DY (-M54) . . . NO-HUB Double

The water closet gasket regularly furnished is made of molded neoprene and designed to fit water closet outlet dimensions and configurations shown in ANSI Standard A112.19.2M-1982, Figure 13B. If gasket is not found to be compatible to fixture due to nonconformance of said fixture to ANSI A112.19.2M, then fixture manufacturer shall be consulted for a suitable gasket recommendation. Jay R. Smith assumes no liability for connections to fixtures which do not conform to these standards.

- NOTE:** Base support must be securely anchored to floor with four 1/2" (13) bolts provided by contractor.
- NOTE:** Shallower minimum rough-in dimension to accommodate lower rough bowls available. Specify dimension required.
- NOTE:** \varnothing of stack to end of NO-HUB side inlet in 5" (125).
- NOTE:** Dimensions shown in parentheses are in millimeters.
- *NOTE:** 9" (230) core drilled hole is required for rough-in 4 1/4 (110) thru 6 1/2 (165).

\odot dimension = 4" (100) (regularly furnished) consisting of nipple and Adjus-to-Wall coupling permitting adjustment from 3" (76) min. to 4" (100) max. A

A x B Size	C	D		E	F
		MIN	MAX		
4 (100) x 4 (100)	9 (230)	1 1/2 (38)	4 1/4 (110)	14 (355)	2 1/4 (57)
5 (125) x 4 (100)	11 1/2 (290)	1 1/2 (38)	4 1/4 (110)	11 1/2 (290)	2 3/4 (70)
5 (125) x 5 (125)	11 1/2 (290)	1 1/2 (38)	4 1/4 (110)	11 1/2 (290)	2 3/4 (70)
6 (150) x 4 (100)	11 1/2 (290)	1 1/2 (38)	4 1/4 (110)	11 1/2 (290)	3 1/4 (83)
6 (150) x 5 (125)	11 1/2 (290)	1 1/2 (38)	4 1/4 (110)	11 1/2 (290)	3 1/4 (83)

REV.	DATE	DESCRIPTION	BY	CKD. BY	WEIGHT POUNDS	VOLUME CUBIC FEET	FIGURE NUMBER
	8-19-20 11/20/09 8-25-04	Rev. Draw./Dim: 16 7/16 - 16 3/4 3/4 (19) was 1/2 (13) Revised Front View	MW JJ RN	CL CL AM			0250Y (-M54)