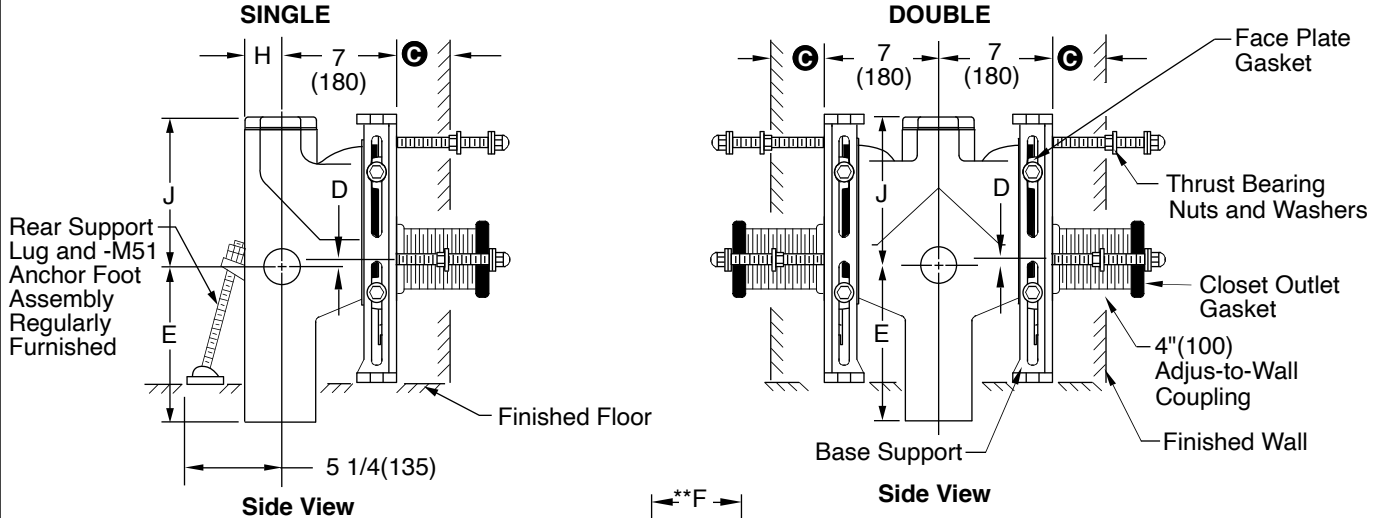




LOCATION

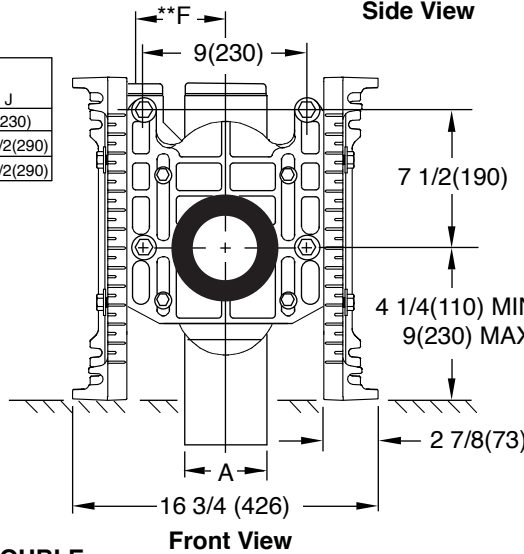
# ADJUSTABLE FIXTURE SUPPORTS FOR SIPHON JET WATER CLOSETS



A SIZE	D		E	**F	H	J
	MIN	MAX				
4(100)	1 1/2(38)	4 1/4(110)	14(355)	5 1/4(135)	2 1/4(57)	9(230)
5(125)	1 1/2(38)	4 1/4(110)	11 1/2(290)	6 1/4(160)	2 3/4(70)	11 1/2(290)
6(150)	1 1/2(38)	4 1/4(110)	11 1/2(290)	6 1/4(160)	3 1/4(83)	11 1/2(290)

NOTE: Base support must be firmly anchored to floor with one 1/2\"(13) bolt per base support provided by contractor.

NOTE: All single supports shall have the rear support lug anchored by the contractor to assure a rigid installation. The rear support completes the 3-point anchoring system for ultimate stability of the installation.



NOTE: When used with concealed flush valve locate face plate behind supply pipe.

NOTE: Shallower minimum rough-in dimension available to accommodate lower rough bowls. Specify dimension required.

NOTE: 1 1/2(38) or 2(51) NPT inlet available. Add suffix -N  
 \*NOTE: 9\"(230) core drilled hole is required for rough-in 4 1/4(110) thru 6 1/2(165)

\*\*NOTE: \"F\" dimension is from centerline of vent to centerline of stack.

Fig. 0230Y (-M54-M58) . . . NO-HUB  
 Fig. 0230DY (-M54-M58) . . . NO-HUB DOUBLE

DRAWING NUMBER  
0230Y (-M54-M58)

SIZE  
A

SCALE:  
NONE

DATE:  
12/09/04

APPROVED BY:  
AM

CHECKED BY:  
AM

DRAWN BY:  
JJ

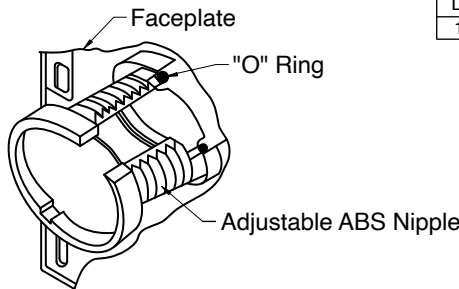
FIGURE NUMBER  
0230Y (-M54-M58)

WE CAN ASSUME NO RESPONSIBILITY FOR USE OF SUPERSEDED OR VOID DATA

DIMENSIONS ARE SUBJECT TO MANUFACTURERS TOLERANCE AND CHANGE WITHOUT NOTICE

NOTE: Dimensions shown in parentheses are in millimeters.

NOTE: When nipple lengths between 3 1/4\"(83) and 10 3/4\"(275) are specified, the 10\"(255) nipple will be supplied. The threaded end of nipple must be cut to specified length by others.



LENGTH	MIN.	Ⓢ	MAX.
10(255)	9 3/4(250)		10 3/4(275)

\*ABS (Regularly Furnished).

REV.	DATE	DESCRIPTION	BY	CKD. BY	WEIGHT POUNDS	VOLUME CUBIC FEET	FIGURE NUMBER
D	8-19-20	Rev. Draw./Dim: 16 7/16 - 16 3/4	MW	CL			0230Y (-M54-M58)
C	2-18-13	Rev. Dim., Table	TBW	CL			
B	11/20/09	3/4 (19) was 1/2 (13)	JJ	CL			
A	11/19/07	Moved J & E Dimensions	JJ	CL			