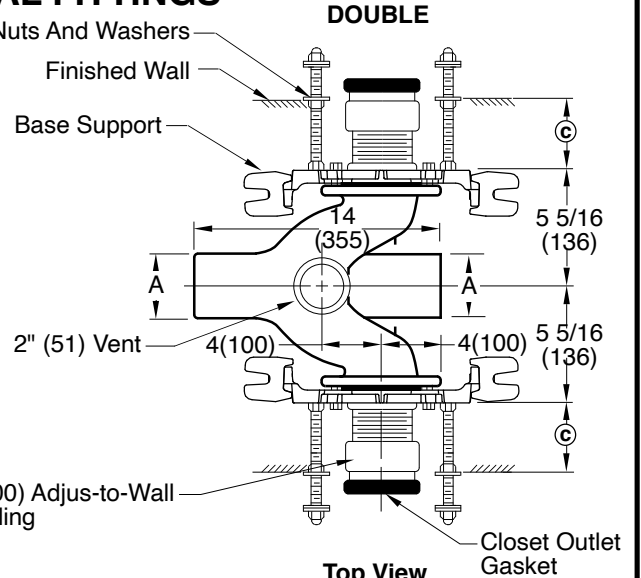
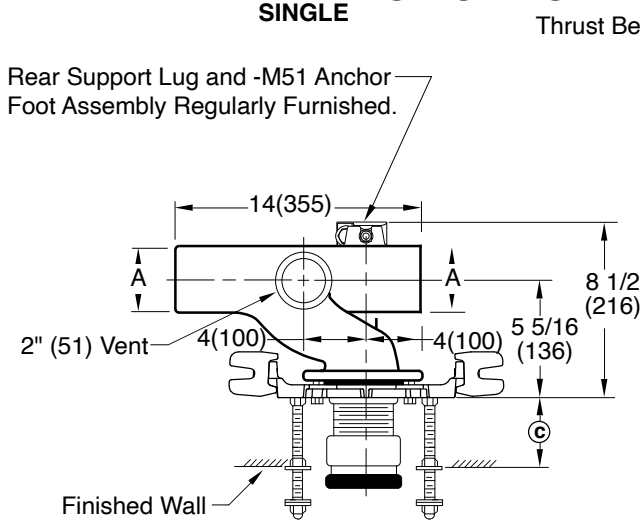


# ADJUSTABLE FIXTURE SUPPORTS

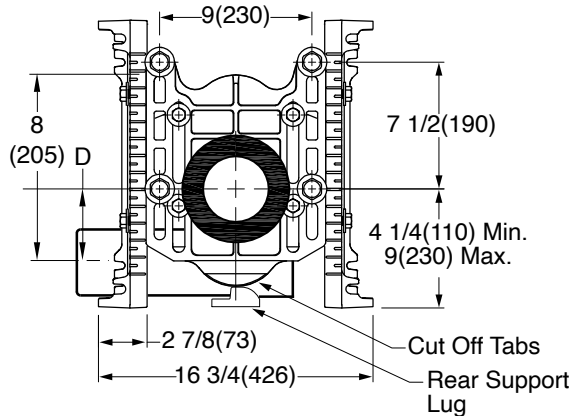
## FOR SIPHON JET WATER CLOSETS SHALLOW ROUGH-IN TYPE

### NO-HUB HORIZONTAL FITTINGS



**Top View Single**

**Top View Double**



**Front View**

**NOTE:** Base support must be securely anchored to floor (with four 1/2" (13) bolts provided by contractor).

**NOTE:** Dimensions shown in parentheses are in millimeters.

The water closet gasket regularly furnished is made of molde neoprene and designed to fit water closet outlet dimensions and configurations shown in ANSI Standard A112.19.2M-1995, Figure 13B. If gasket is not found to be compatible to fixture due to nonconformance of said fixture to ANSI A112.19.2M, then fixture manufacturer shall be consulted for a suitable gasket recommendation. Jay R. Smith assumes no liability for connections to fixtures which do not conform to these standards.

A SIZE	D	
	MIN	MAX
3(75)	5/8(16)	3 3/8(87)

- Fig. 0208LY-M54 ..... NO-HUB Left Hand
- Fig. 0208RY-M54..... NO-HUB Right Hand
- Fig. 0208DY-M54..... NO-HUB Double

© dimension = 4" (100) (regularly furnished) consisting of nipple and Adjus-to-Wall coupling permitting adjustment from 3" (76) min. to 4" (100) max.

DRAWING NUMBER  
s0208Y-M54

SIZE  
A

SCALE:  
NONE

DATE:  
3-18-11

APPROVED BY:  
AM

CHECKED BY:  
AM

DRAWN BY:  
TBW

**0208Y-M54**

WE CAN ASSUME NO RESPONSIBILITY FOR USE OF SUPERSEDED OR VOID DATA

DIMENSIONS ARE SUBJECT TO MANUFACTURERS TOLERANCE AND CHANGE WITHOUT NOTICE

REV.	DATE	DESCRIPTION	BY	CKD. BY
A	11-18-13	Revised Drawing	TBW	CL

WEIGHT POUNDS	VOLUME CUBIC FEET

**FIGURE NUMBER**  
**0208Y-M54**