

# ZIP TRENCH™. Going to great lengths to make installations fly.



## ZIP TRENCH™

12" WIDE 9960 SERIES TRENCH DRAIN SYSTEM

- Fast Install with 9' 10" sections
- Reduces labor costs by up to 75%
- Load Class C and E Grates
- Lighter weight and faster to install than cast-in-place.
- 4", 6", and 8" no-hub vertical outlets
- Presloped channels for better hydraulics
- 16 channels—12 sloping and 4 neutral from a depth of 7-9/16" - 22-9/16"
- Extra heavy-duty painted steel frame is standard; also available in galvanized or stainless steel.

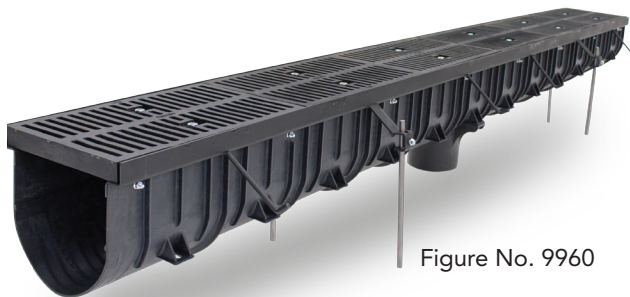


Figure No. 9960



**JAY R. SMITH MFG. CO.**  
MEMBER OF MORRIS GROUP INTERNATIONAL

P.O. Box 3237 • Montgomery, AL 36109  
TEL: 334.277.8520

[www.jrsmith.com](http://www.jrsmith.com)

MEMBER OF  
  
**MORRIS GROUP**  
INTERNATIONAL  
[www.morrisgroup.co](http://www.morrisgroup.co)

