



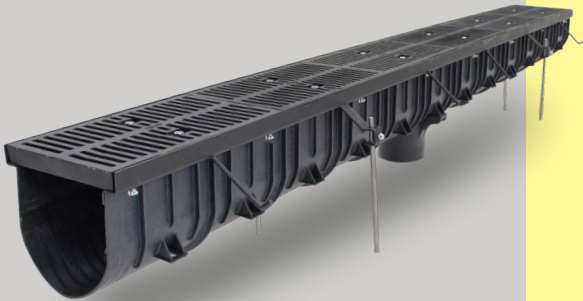
Your COMPLETE TRENCH source!



6" Wide Zip Trench™ 9940 Series

Polypropylene 6" Zip Trench™ Drain System

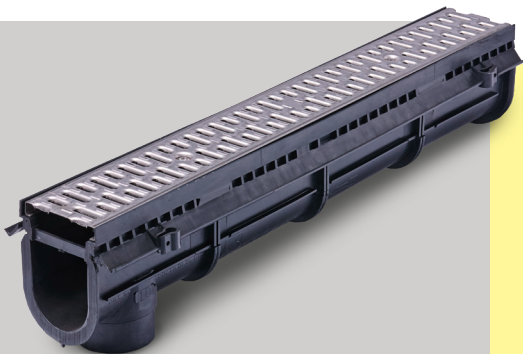
- Fast, long, pre-assembled runs shipped from factory: 9'-10" (3 meter) long channels
- 16 Channels - 12 sloping channels and 4 neutral channels from a depth of 4.81" to 13.81"
- Lighter weight and faster to install than polymer concrete
- Excellent Chemical Resistance
- Temperature rating of 180 degrees vs 140 degrees F with polyethylene
- Load Class A-E
- Built-in slope .6%



12" Wide Zip Trench™ 9960 Series

Polypropylene 12" Zip Trench™ Drain System

- Fast, long, pre-assembled runs: 9'-10" (3 meter) long channels
- 16 channels-12 sloping and 4 neutral from a depth of 7-9/16 "- 22-9/16"
- Excellent Chemical Resistance
- Temperature rating of 180 degrees vs 140 degrees F with polyethylene
- Built-in slope 1.07%
- 4 grate types:
 - Class C-Stainless steel perforated and mesh
 - Galvanized steel perforated and mesh
 - Class E-Ductile Iron ADA
 - Ductile Iron Slotted

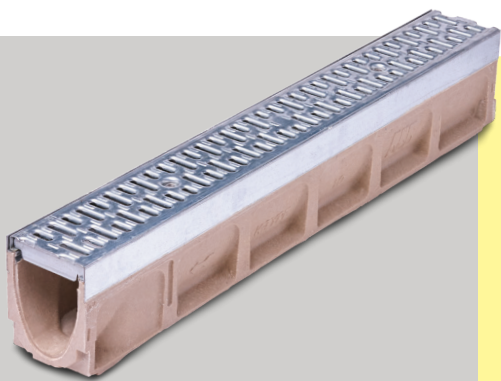


Enviro-Flo® II 9930 Series

Polypropylene 6" Enviro-Flo® II Trench Drain System

- Lightweight, interlocking polypropylene channels are ideal for heavy duty applications
- Excellent Chemical Resistance
- Superior UV resistance
- Bottom outlet on every section
- Temperature rating up to 180° F
- Load Class A - C
- For Extra Heavy Duty applications use the 9940 or 9931





9895 Series

Polymer Concrete Trench Drain System

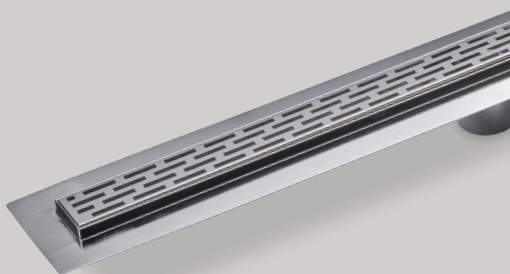
- Varying widths and depths to meet application needs—1m in length.
- Anchor ribs offer security against upward movement or shifting after installation.
- Widths vary from 3.2" to 14" -Lengths from 1/2 meter (19.68") to 1 meter (39.36")
- Integral rails Galvanized, Stainless Steel, Ductile Iron
- Anchor ribs for mechanical lock into the surrounding concrete
- Load Class A - E



9660 Series

Stainless Steel 6" Modular Trench Drain System

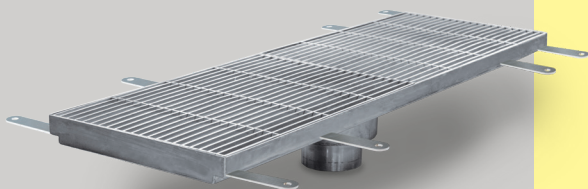
- All drains constructed from 16 gage, type 304 Stainless Steel, type 316 Stainless Steel is optional.
- Sanitary Food Service, Chemical Resistance, Aesthetics
- Pre-engineered with a .6% built in slope
- 1 meter lengths (39.36") Flanged bolt together ends with gaskets
- Load Class A - E



9667 Series

Linear Shower Drain System

- 2" wide barrier free threshold drain for shower stall.
- Vandal-proof ADA compliant perforated or slotted grates.
- Optional flange or clamping collar w/weep holes
- Optional 2" NPT or 2"x 3" bottom outlet connection with model 215/216 floor drain
- Standard lengths 24", 32" 36", 42" 48" 60"
- Custom lengths available



9679 Series

Stainless Steel 6" - 24" Threshold Drain™

- Varying widths and depths to meet various GPM requirements
- Heel-proof grate prevents injury
- Customizable to work with all building structure conditions
- Easily removable grating for fast cleaning and maintenance
- Complies with nationwide Building/Fire Codes
- ADA compliant
- 1.75" deep for post tension slabs
- Load Class A



JAY R. SMITH MFG. CO.
MEMBER OF MORRIS GROUP INTERNATIONAL

P.O. Box 3237 • Montgomery, AL 36109
TEL: 334.277.8520

www.jrsmith.com



WARNING: Cancer and Reproductive Harm - www.P65Warnings.ca.gov



MORRIS GROUP
INTERNATIONAL
www.morrisgroup.co

SPM3008-0519