



**JAY R. SMITH MFG. CO.**

Member of Morris Group International



**STAINLESS STEEL GREASE INTERCEPTORS**

**8000SS-8100SS**



**TOUGH ON GREASE. EASY ON YOU!**

THE RIGHT GREASE INTERCEPTOR FOR YOUR RESTAURANT OR BUSINESS



# 800SS-810SS

## STAINLESS STEEL GREASE INTERCEPTORS

### THE BENEFITS OF A STAINLESS STEEL GREASE INTERCEPTOR

- Corrosion resistance
- Fire and heat resistance
- Hygiene
- Aesthetic appearance
- Strength-to-weight advantage
- Impact resistance
- Long term value



### WHY CHOOSE PLASTIC WHEN YOU CAN HAVE STAINLESS STEEL?

Below is a comparison of Smith's Stainless Steel Grease Interceptors versus Plastic Grease Interceptors. Smith offers a superior material at a compatible price to plastic.

FEATURES	STAINLESS STEEL INTERCEPTORS	PLASTIC INTERCEPTORS
Aesthetically Pleasing in Kitchens	✓	
Lightweight	✓	✓
Easy to Clean & Maintain	✓	
PDI/UPC Approvals	✓	✓
No Distortion	✓	
Above 140 Degree Temperature	✓	
Low cost installation	✓	✓
Durable & Long Lasting	✓	
Tempering Valve Not Required	✓	

# THE RIGHT GREASE PRODUCT FOR YOUR RESTAURANT OR BUSINESS



**ABOVE-THE-FLOOR**



**UNDER-THE-SINK**



**RECESSED-IN-THE-FLOOR**

## 8000SS-8100SS STAINLESS STEEL GREASE INTERCEPTORS

- Constructed of type 304 stainless steel
- Safe to use with water temperatures above 140° F
- Non-Flammable
- Conforms to Grease Interceptor Standards: PDI G101 (Certified), ASME A112.14.3
- Designed for floor mount or recessed installations
- Regularly furnished with no-hub inlet/outlet connections
- Designed to be installed under the sink or in an area where space is limited
- External flow control fitting with no-hub connections



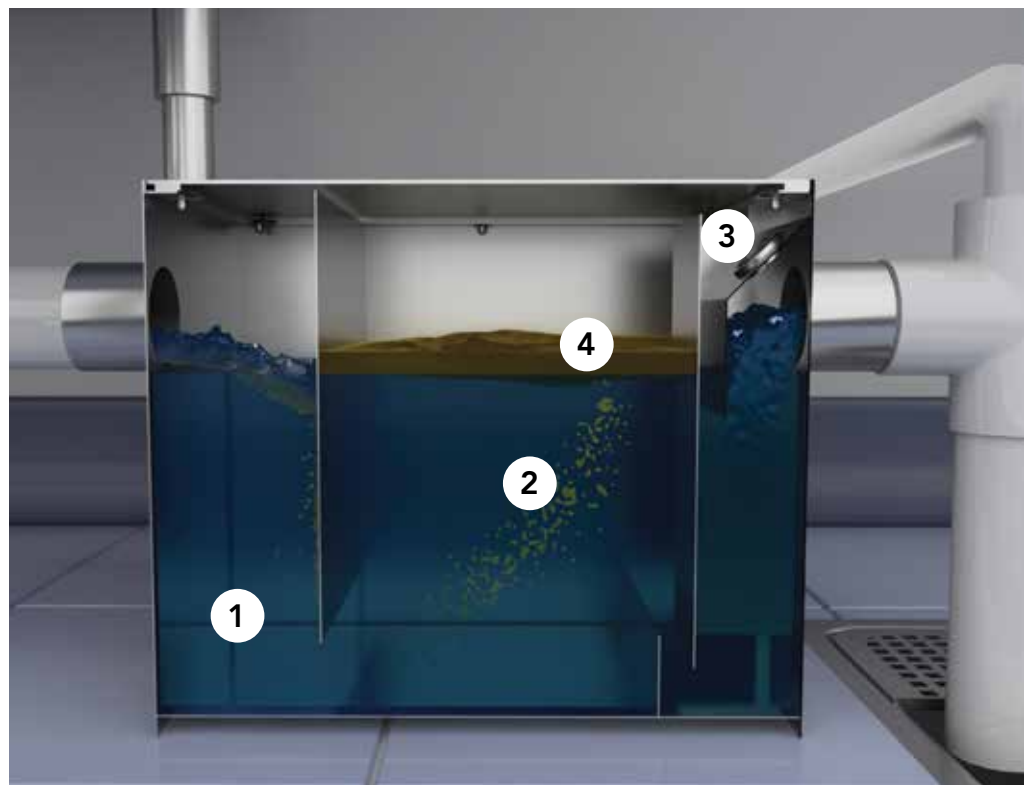
*“The advantage of a stainless steel interceptor is its proven track record and long-established acceptance by the plumbing industry.”*

- PM Engineer Magazine

## HOW IT WORKS

Uniquely designed for high traffic food industry applications, Smith's Stainless Steel Grease Interceptor keeps kitchens clean by trapping fats, oils and greases (FOGs). Grease interceptors reduce the amount of FOGs from entering disposal systems and sewer lines, helping to maintain cleanliness and assist in preventing clogs in the sanitary system.

1. FOG Laden wastewater enters the separation chamber of the interceptor, while baffles separate FOGs in a non-turbulent environment
2. Escaping air helps separates the FOG laden wastewater quickly and bring them to the surface
3. Released air regulates internal running water level
4. FOG reduced effluent discharges from the grease interceptor and into the sewer system



# 8000SS-8100SS

## STAINLESS STEEL GREASE INTERCEPTORS

### SPECIFICATIONS

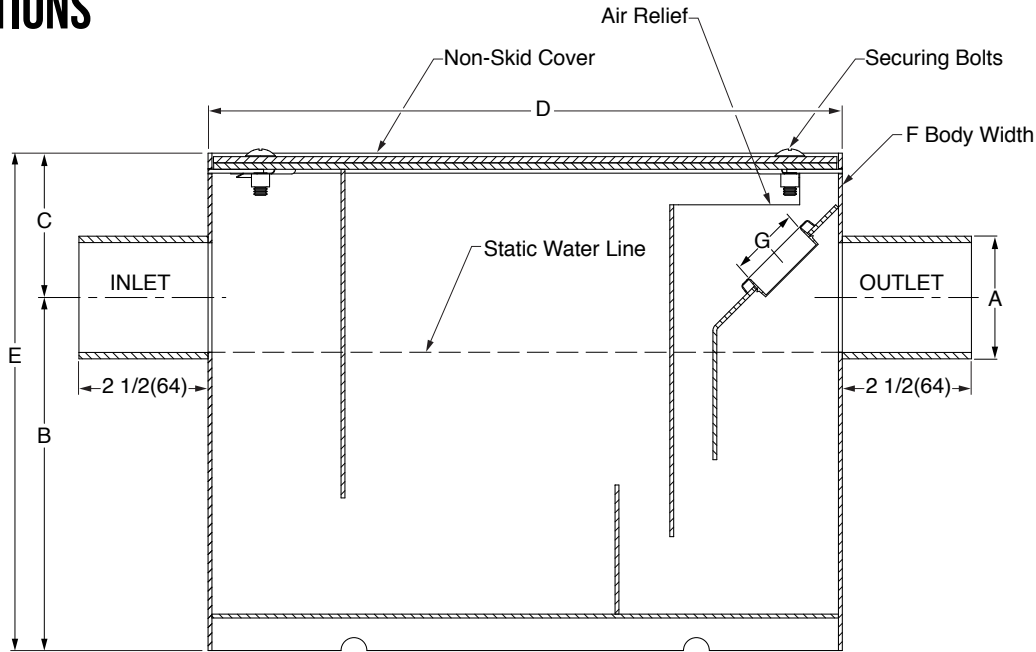


FIG. NO.	MIN GPM FLOW RATE (L/M)	MIN GREASE CAP LBS (KG)	MAX GREASE CAP LBS (KG)	A	B	C	D	E	F (WIDTH)	G (Plug Size)	Dry Weight
8004Y02-SS	4(15)	8(3.6)	37(17)	02(50)	6 7/8(175)	2 3/4(70)	12 1/4(311)	9 5/8(245)	13(330)	1 1/2(38)	19.00 LBS
8007Y02-SS	7(26)	14(6)	39(18)	02(50)	7 3/4(195)	3 1/4(83)	13 5/8(346)	11(280)	14 1/2(368)	1 1/2(38)	23.20 LBS
8010Y02-SS	10(38)	20(9)	47(21)	02(50)	8 3/4(220)	3 5/8(92)	15 (381)	12 3/8(315)	15 3/4(400)	1 1/2(38)	28.00 LBS
8015Y02-SS	15(57)	30(13.6)	95(43)	02(50)	11 1/4(285)	3 1/2(89)	17 3/8(441)	14 3/4(375)	18 1/4(464)	1 1/2(38)	37.20 LBS
8020Y03-SS	20(75)	40(18)	129(59)	03(75)	12 3/4(325)	4 (100)	19 3/8(492)	16 3/4(425)	20 1/4(514)	1 1/2(38)	47.00 LBS
8025Y03-SS	25(95)	50(22.6)	174(79)	03(75)	14 1/4(360)	4 1/8(105)	21(533)	18 3/8(468)	21 3/4(552)	1 1/2(38)	60.80 LBS
8035Y03-SS	35(132)	70(32)	198(89)	03(75)	14 1/2(370)	4 1/2(115)	22 3/8(568)	19(485)	23 1/4(591)	1 1/2(38)	70.00 LBS
8050Y03-SS	50(189)	100(45)	279(127)	03(75)	14 1/2(370)	5 1/4(135)	31 5/8(803)	19 3/4(500)	23 1/4(591)	1 1/2(38)	84.00 LBS
<b>LOW TYPE</b>											
8120Y03-SS	20(75)	40(18)	100(45)	03(75)	7(180)	3 3/4(95)	39 1/2(1010)	10 1/2(265)	20 3/4(527)	1 1/2(38)	71.00 LBS
8135Y03-SS	35(132)	70(32)	125(57)	03(75)	7(180)	4 3/4(120)	52 1/4(1327)	11 3/4(300)	26 3/4(680)	1 1/2(38)	113.00 LBS
8150Y03-SS	50(189)	100(45)	150(68)	03(75)	10(254)	5 15/16(151)	50 1/4(1276)	15 15/16(404)	26 3/4(680)	1 1/2(38)	126.00 LBS

**NOTE:** Dimensions shown in parentheses are in millimeters unless otherwise noted.



#### STAINLESS STEEL GREASE INTERCEPTOR WARRANTY:

Smith stainless steel grease interceptors are warranted against defective materials and workmanship for a period of ten years from the date of purchase. We will replace, free of charge, any Smith stainless steel grease interceptor proven defective that was properly installed, properly maintained, and used in accordance with recommended instructions. We shall not be responsible for any labor charges or any loss, injury or damages whatsoever, including incidental or consequential damages, or for the replacement of gaskets and hardware. We also are not responsible for damage caused by the use of caustic cleaning solutions, such as chlorinated cleansers, sanitizers or bleach of any kind.



Figs. 8007-SS thru 8050-SS carry the Plumbing and Drainage Institute Certification Seal Certifying conformance to Grease Interceptor Standard PDI-G101.

THE FOREGOING EXPRESS WARRANTY IS IN LIEU OF ALL OTHER WARRANTIES, EXPRESS, IMPLIED IN FACT OR IMPLIED BY LAW.



**WARNING:** Cancer and Reproductive Harm - [www.P65Warnings.ca.gov](http://www.P65Warnings.ca.gov)

# JAY R. SMITH MFG. CO. STAINLESS STEEL PRODUCTS



Stainless Steel Grease Interceptor  
Figure No. 8000SS-8100SS

Area & Indirect Waste Drain  
with Dome Bottom Strainer  
or Sediment Bucket  
Figure Number 9691-9699

Trough/Kettle Stainless  
Steel Trench Drain  
Figure Number 9675

General Purpose  
Floor Cleanout  
Figure Number 9646

Trough/Kettle Stainless  
Steel Trench Drain  
Figure Number 9675

General Purpose Floor Drain  
Figure Number 9630-9633

## Want More Stainless Steel?

In addition to grease interceptors, Smith offers a wide variety of Stainless Steel products including floor drains, roof drains, sanitary floor sinks, clean outs, and trench drains. See page 7

# FLOOR DRAINS • ROOF DRAINS • CLEANOUTS • TRENCH DRAINS • SANITARY FLOOR DRAINS

## THE RIGHT STAINLESS PRODUCT FOR YOUR RESTAURANT OR BUSINESS

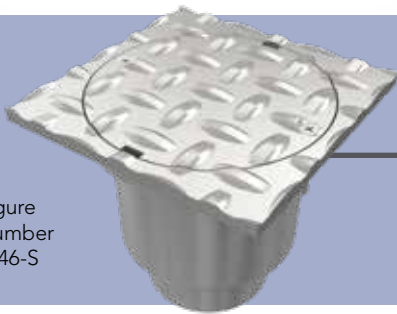
Figure  
Number  
9630



**Stainless Steel Floor Drains**  
9600/9700 Series

Jay R. Smith Mfg. Co.® proudly manufactures durable, sanitary and corrosion-resistant Stainless Steel Drains that offer lifelong service and enhanced custom appearance to fit any high-traffic application.

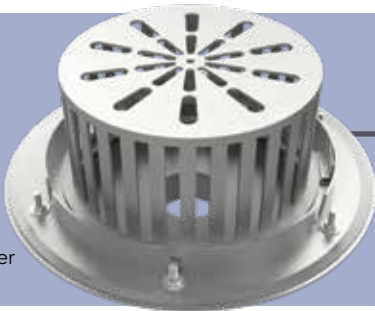
Figure  
Number  
9646-S



**Stainless & Carbon Steel Cleanouts**  
9646/9760 Series

Stainless Steel and Carbon Steel Cleanouts offer high sanitation and corrosion resistance in facilities including food processing plants, healthcare facilities, commercial kitchens and more.

Figure  
Number  
9680



**Roof Drains**  
9680/9780 Series

Smith Roof Drains are used in flat roofs of any construction type. A low-profile dome provides sufficient free area for quick drainage of rain water and protects the piping from debris.

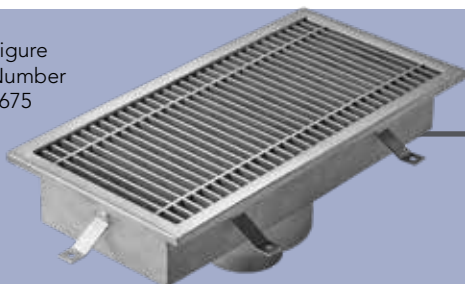
Figure  
Number  
9691



**Floor Sinks**  
9600/9700 Series

Ideal for locations where superior sanitation, corrosion resistance, durability and longevity are required, Smith Floor Sinks evacuate waste water while protecting pipes from food and debris.

Figure  
Number  
9675



**Stainless Steel Trench Drains**  
9660/9679 Series

"Best In Class" Stainless Steel Trench Drains are ideal for many facilities requiring high sanitation and corrosion resistance, and are regularly furnished with standard or custom grates.

# Jay R. Smith Mfg. Co<sup>®</sup>. can design custom commercial kitchen products to meet most any job site requirements.



Smith Grease Interceptors are built tough to withstand even the harshest environments.



Smith products are uniquely customized to meet the needs and requirements of each project.

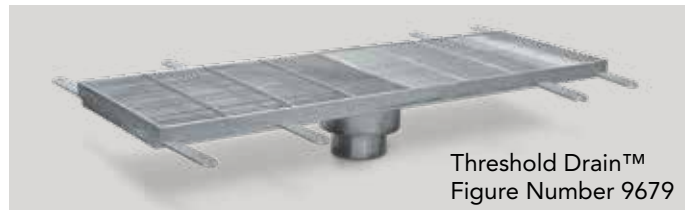
## We specialize in:

- custom designs
- custom widths
- custom depths

Contact Smith for your unique application challenge.



Low, tall, narrow or wide, Smith Stainless Steel Grease Interceptors are manufactured to fit any situation.



Threshold Drain™  
Figure Number 9679



Add some style to your drain with custom-designed etching and cutting.



**JAY R. SMITH MFG. CO.<sup>®</sup>**  
MEMBER OF MORRIS GROUP INTERNATIONAL

2781 Gunter Park Dr. East • Montgomery, AL 36109-1405 United States  
(334) 277-8520 • [www.jrsmith.com](http://www.jrsmith.com)

## INNOVATIVE SPIRIT AND ENGINEERING FOUNDATION

“What sets us apart from competitors is our engineering and spirit. We have a ‘can-do’ spirit. If you ask us to do something, we will do it or figure out how to do it. That’s the part our customers like, that’s the part we like.”

- Don Morris, President and CEO

SPM0839  
0618



**MORRIS GROUP**  
INTERNATIONAL<sup>®</sup>

BRANDS BUILT TO LAST!<sup>™</sup>

[morrisgroup.co](http://morrisgroup.co)