



JAY R. SMITH MFG. CO.
MEMBER OF MORRIS GROUP INTERNATIONAL

SAVE TIME. SAVE MONEY. WITH SMITH LABOR SAVER[®] FIXTURE SUPPORTS DESIGNED FOR CONTRACTORS



**Quarterback Water
Closet Support**
Fig. No. 0211Y-M54



**Lavatory Support with
Concealed Arms**
Fig. No. 0710



SAVE TIME & MONEY WITH JAY R. SMITH MFG. CO.

LABOR SAVER[®] SUPPORTS

Labor Saver[®] fixture supports for water closets, lavatories, and toilets help you complete jobs faster and more efficiently.



TIME ADDS UP

Each Labor Saver fixture support can save you 15-20 minutes on installation time per support. This adds up to hours over the course of a job!

HOW?

Labor Saver fixture supports come pre-assembled! Supports feature a one-piece, unitized construction, while the Quarterback Water Closet Support ships with legs and faceplate already attached.

- Pre-assembly means...
 - No missing parts
 - Fast install at job site
 - Less waste

• Stocked for shipment

- Quicker order fulfillment
- Ability to take on rush projects

ENHANCED PREFABRICATION CAPABILITIES

- Assemble any number of fixture supports
- Many options for battery prefabrication style
- All supports feature numerous attachment points for maximal flexibility.
- Transport entire battery to job site as one piece.

PREFABRICATION SAVES

- Time
- Labor
- Money

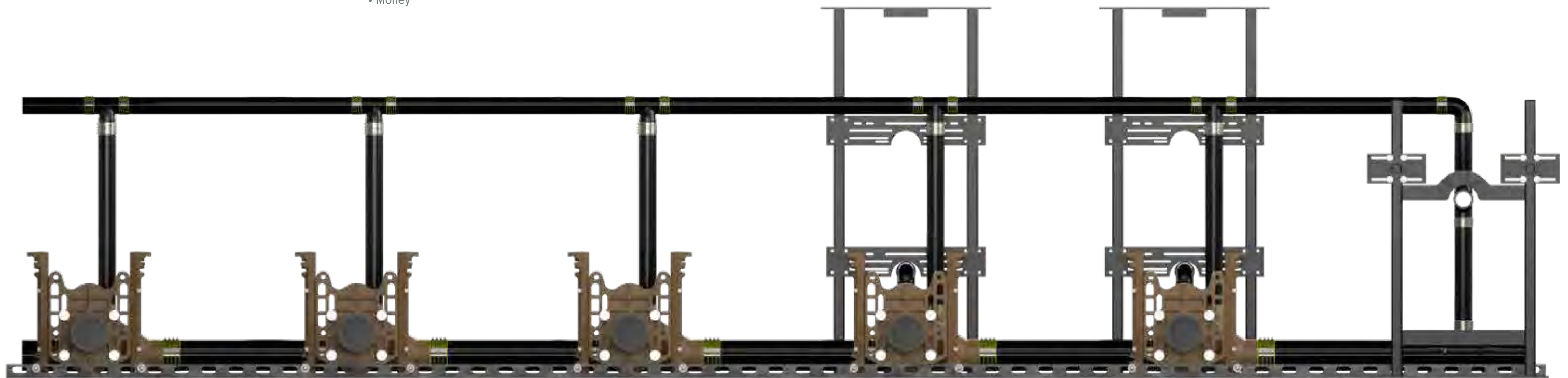


**Urinal Support
with Hanger Plate**
Fig. No. 0617



**Lavatory Support
with Concealed Arms**
Fig. No. 0710

- Floor-mounted legs
- Easy field adjustment
- Suitable for narrow wall and metal stud configurations
- TAB option allows for two anchors per foot (Fig. No. 0710)
- Fixture-specific arms eliminate additional labor for lengthy in-field configuration and/or adjustment
- Height and side-to-side adjustment is done from the front of the support, using four nuts

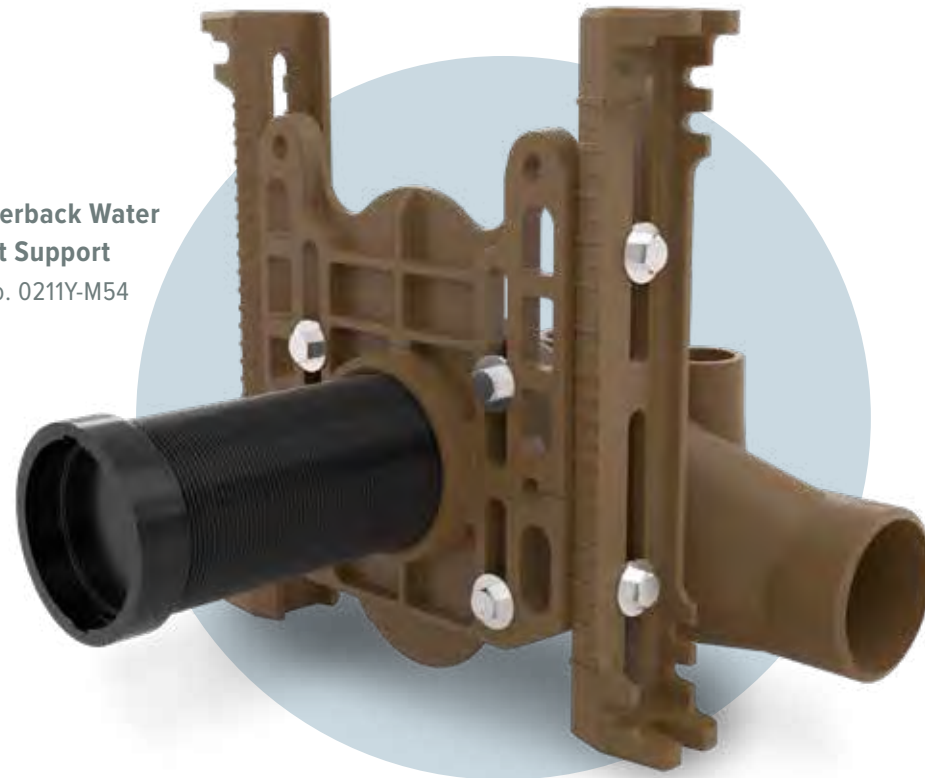


Our labor-saving fixture supports feature a number of attachment points, making it easy to prefabricate and plumb batteries before transporting to the job site.

THE QUARTERBACK®

LABOR SAVING FEATURES

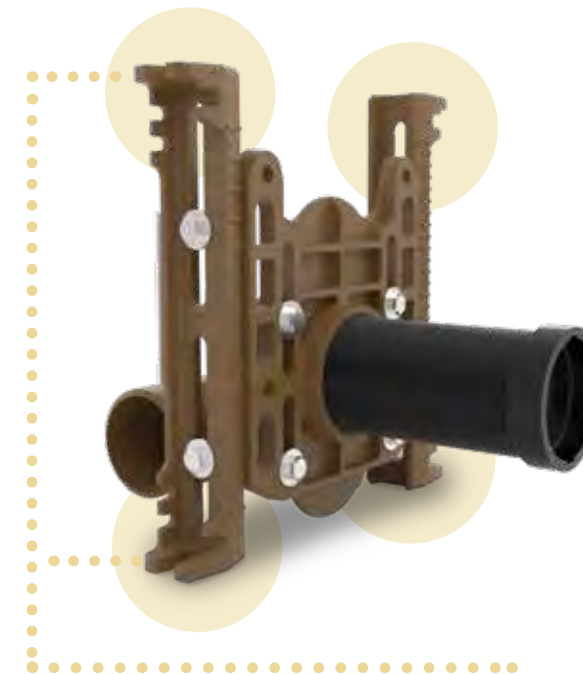
Quarterback Water Closet Support
Fig. No. 0211Y-M54



Left, right, double, and vertical fittings available. Fittings with auxiliary inlet option tie in nearby urinal or lavatory

Optional auxiliary inlet

36" long barrel fittings connect fixtures supports to each other, eliminating pipe connections and possible leak points



Legs provide numerous mounting options for fixture support battery prefabrication or flush valve supply line support

Legs provide enough space for job-site adjustments between studs



Easy access to faceplate bolts for quick adjustment during prefabrication



Faceplate kit arrives with legs pre-secured to faceplate. Adjust-to-wall and O-ring style faceplate kits available



One anchor per leg for fast and easy installation (anchor is installed through notch in bottom of foot)

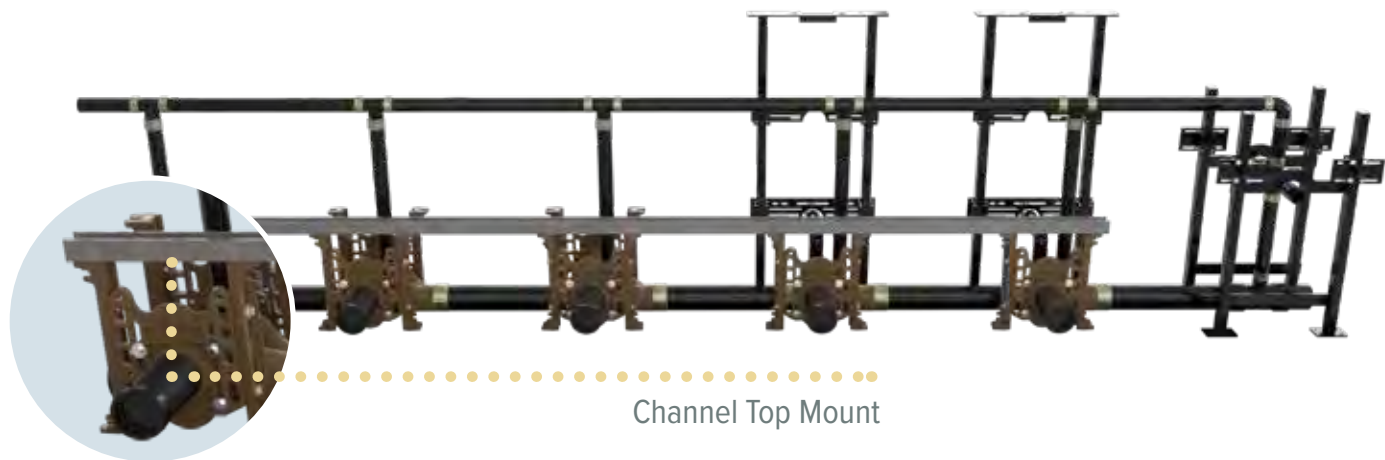
BATTERY PREFABRICATION OPTIONS



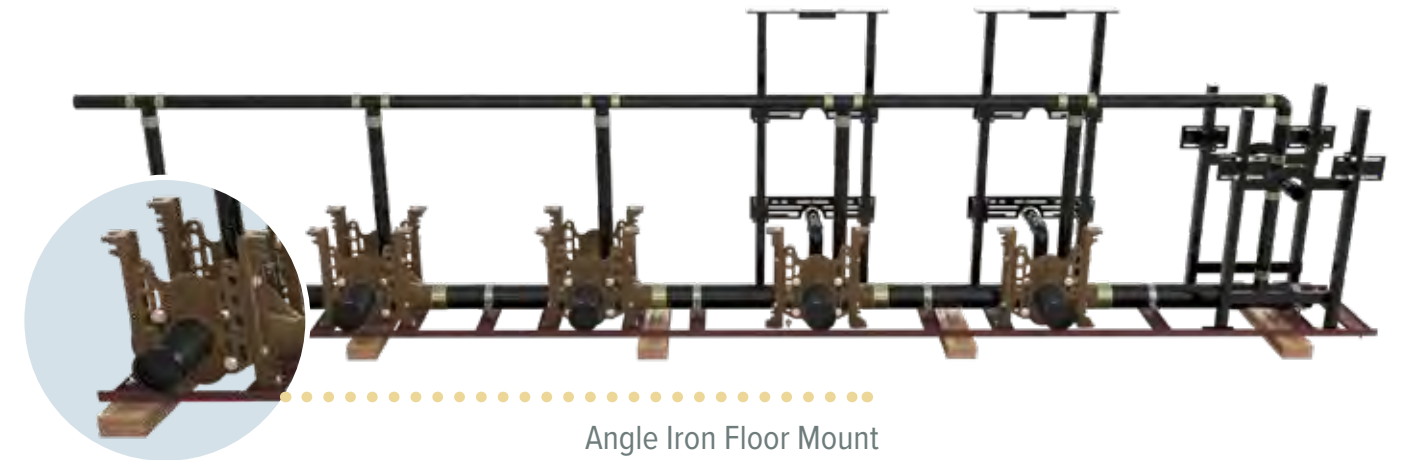
Angle Iron / Channel Foot Mount



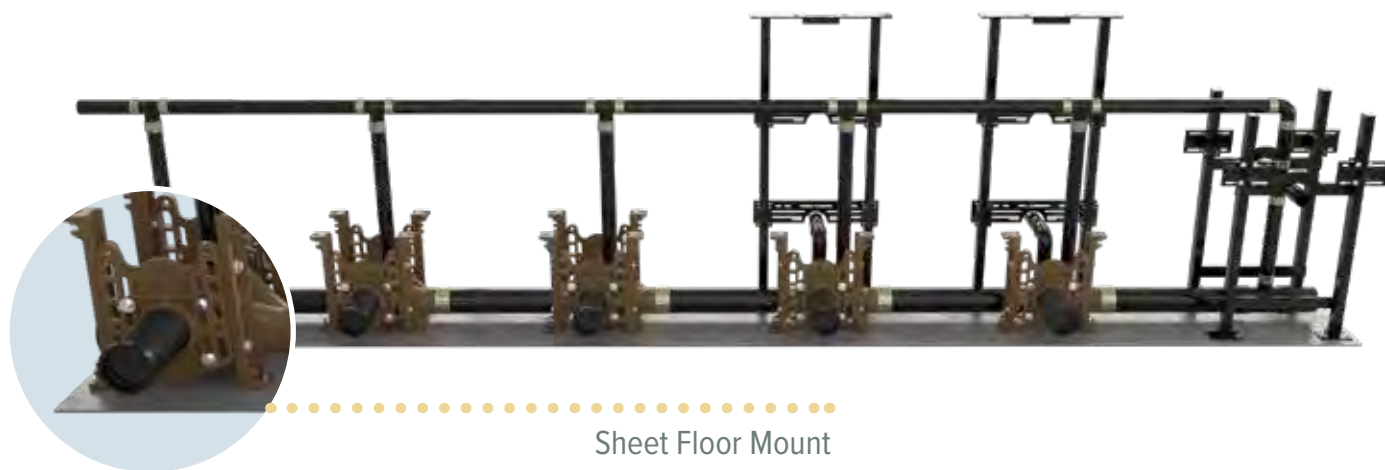
Iron Mounted Top Mount with Brackets



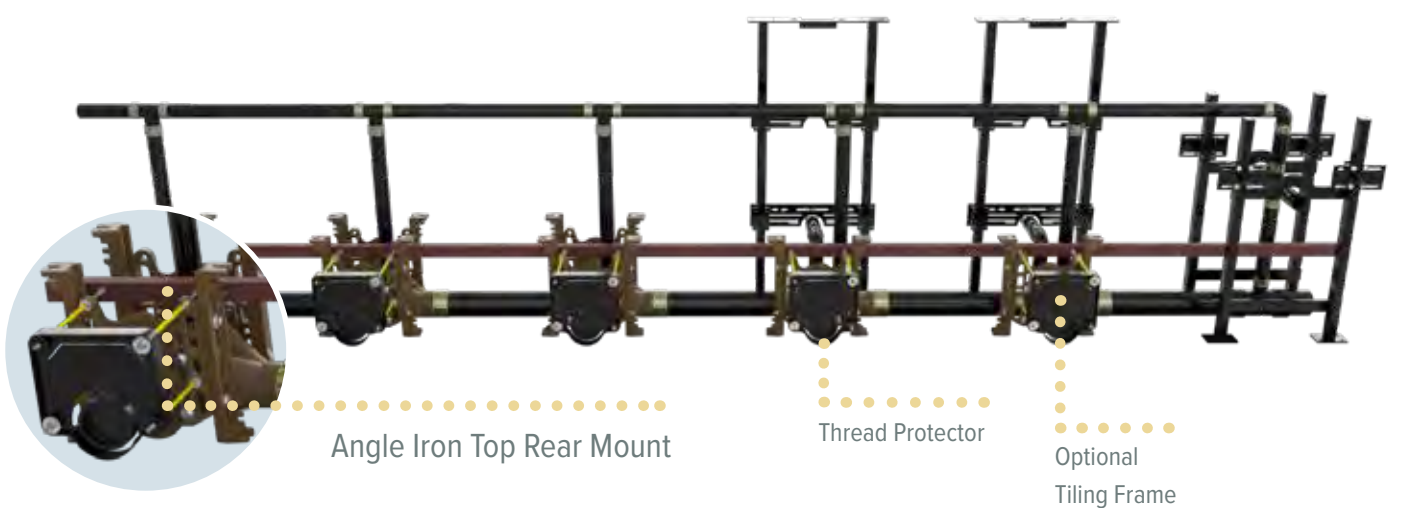
Channel Top Mount



Angle Iron Floor Mount



Sheet Floor Mount



Angle Iron Top Rear Mount

Thread Protector

Optional
Tiling Frame

Batteries shown are for prefabrication and example only and are not methods for permanently anchoring the battery.



JAY R. SMITH MFG. CO.®
MEMBER OF MORRIS GROUP INTERNATIONAL

2781 Gunter Park Dr. East • Montgomery, AL 36109-1405 • United States
Tel 334-277-8520 • www.jrsmith.com

WARNING: Cancer and Reproductive Harm - www.P65Warnings.ca.gov

INNOVATIVE SPIRIT AND ENGINEERING FOUNDATION

“What sets us apart from competitors is our engineering and spirit. We have a ‘can-do’ spirit. If you ask us to do something, we will do it or figure out how to do it. That’s the part our customers like, that’s the part we like.”

- Don Morris, President and CEO



MORRIS GROUP
INTERNATIONAL®

BRANDS BUILT TO LAST!™

morriscgroup.co

11/20 SPM0914