



**JAY R. SMITH MFG. CO.**  
MEMBER OF MORRIS GROUP INTERNATIONAL



Special Purpose Rim Flow Drain  
Figure No.9614

Trough/Kettle Stainless Steel Trench Drain  
Figure No. 9675

# STAINLESS STEEL DRAINAGE PRODUCTS



General Purpose Floor Drain  
Figure No. 9630-9633

FLOOR DRAINS • FLOOR SINKS • CLEANOUTS  
TRENCH DRAINS • INTERCEPTORS

ENGINEERED AND DESIGNED FOR PERFORMANCE BY JAY R. SMITH MFG. CO.®



# SMITH STAINLESS STEEL DRAINAGE PRODUCTS

## Index



Modular Stainless Steel  
Trench Drain System  
Figure No. 9660

### Table of Contents

Stainless Steel Introduction	3
Recommended Products by Industry or Application	4-6
Smith Stainless Steel Grease Interceptor	7
Smith Stainless 9600 Series - <u>Fabricated</u> Drains & Cleanouts	7-11
Smith Stainless 9700 Series - <u>Cast</u> Drains & Cleanouts	12-13
Smith Stainless Trench & Trough Drains	14
Smith Stainless Trench Grates	15
Recommended Products by Industry or Application Chart	16-19



# SMITH STAINLESS STEEL DRAINAGE PRODUCTS

## Introduction



### **Stainless Steel – The Ultimate Material**

Stainless steel is one of the most popular and widely used materials available today due to its appearance, durability and longevity.

Stainless steel's unique advantage is its chromium content. Chromium has a great affinity for oxygen, and will form a film of chromium oxide on the surface of the steel, allowing it to resist stains and corrosion. This ensures easy cleaning and a sanitary appearance that lasts for years.

The material is perfect for applications in which products may endure heavy use or abuse because it will not warp or break, even in extreme conditions. This durability makes Stainless steel an ideal material for floor drains, floor sinks, floor cleanouts and trench drains.

In many cases stainless steel is the most cost-efficient solution because it requires less maintenance and has a longer service life than other materials. Moreover, stainless steel is recyclable.

### **Industries and Applications**

- Bottling Plants
- Breweries
- Chemical Plants
- Commercial Kitchens
- Dairies
- Fossil Fuel Plants
- Foot Traffic Areas, Showers or Restrooms
- Food Handling, Restaurants and Cafeterias
- Healthcare Facilities, Hospitals, Nursing Homes
- Laboratories
- Nuclear Power, Atomic Energy Plants
- Pharmaceutical Facilities, Clean Room, Lab



# SMITH STAINLESS STEEL DRAINAGE PRODUCTS

## Pharmaceutical, Laboratories and Healthcare



General Purpose Floor Drain  
Figure No. 9614-S

General Purpose Floor Drain  
Figure No. 9614-S

Special Purpose Floor Drain with Special Duty Grate  
9620-9621-RF-SRF

General Purpose Floor Cleanout  
Figure No. 9646-S

Area & Indirect Waste Drain with Dome Bottom Strainer or Sediment Bucket  
Figure No. 9691-9699



# SMITH STAINLESS STEEL DRAINAGE PRODUCTS

## Wineries, Breweries and Bottling Plants



Modular Stainless Steel Trench Drain  
Figure No. 9660

General Purpose Area/Floor Drain  
Figure No. 9635-38-SBG

General Purpose Area/Floor Drain  
Figure No. 9630-32-SBG

Special Purpose Rim Flow Drain  
Figure No. 9614

General Purpose Floor Drain  
9614-9615

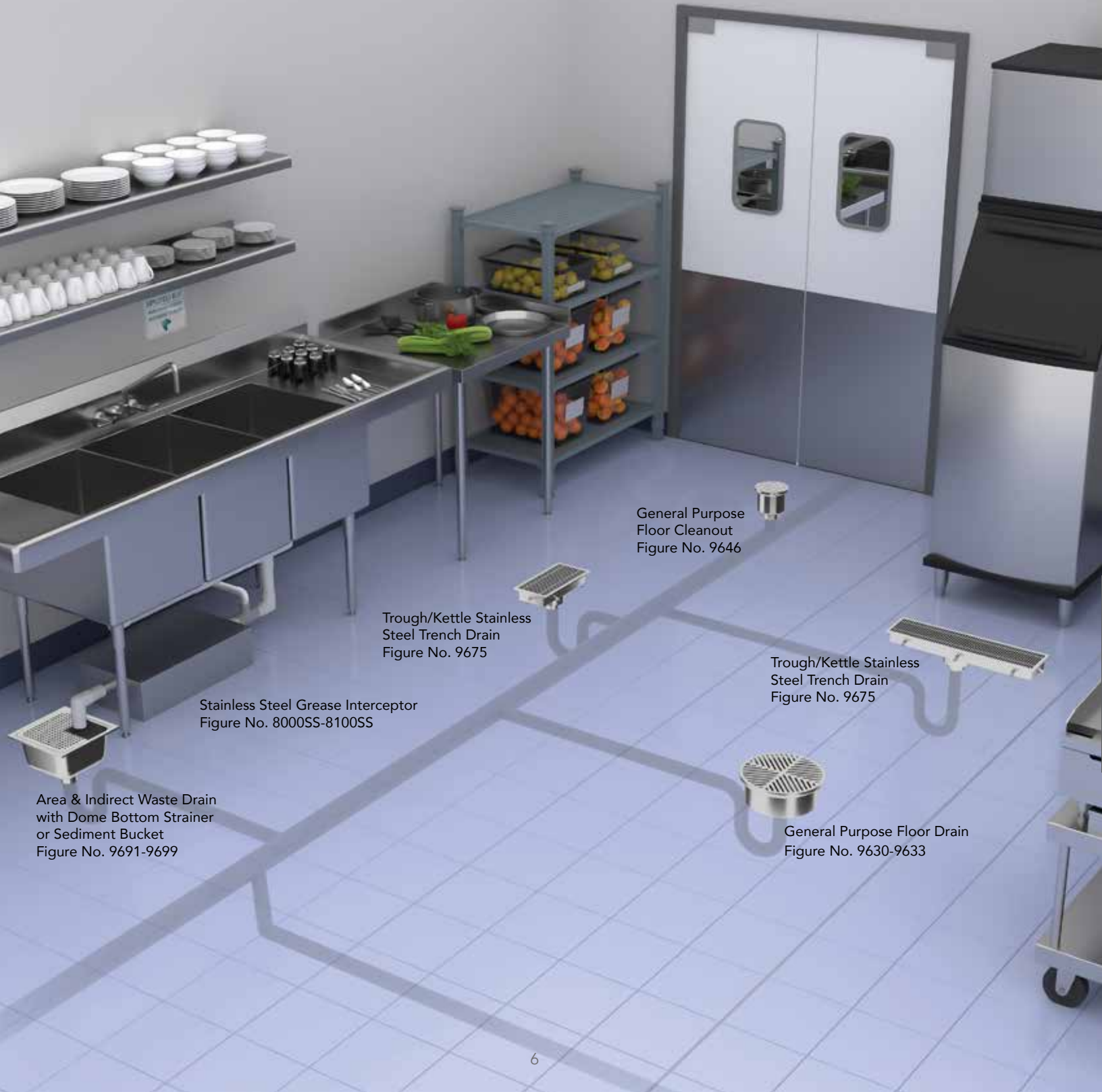
Special Purpose Rim Flow Drain  
Figure No. 9614

General Purpose Floor Cleanout  
Figure No. 9646-S



# SMITH STAINLESS STEEL DRAINAGE PRODUCTS

## Commercial Kitchens



General Purpose Floor Cleanout  
Figure No. 9646

Trough/Kettle Stainless Steel Trench Drain  
Figure No. 9675

Stainless Steel Grease Interceptor  
Figure No. 8000SS-8100SS

Trough/Kettle Stainless Steel Trench Drain  
Figure No. 9675

Area & Indirect Waste Drain with Dome Bottom Strainer or Sediment Bucket  
Figure No. 9691-9699

General Purpose Floor Drain  
Figure No. 9630-9633



# SMITH STAINLESS STEEL DRAINAGE PRODUCTS

## 8000SS-8100SS and 9600 Series

**8000SS Series** – Jay R. Smith Mfg. Co. produces durable, sanitary and corrosion-resistant grease interceptor which offer lifelong service and enhanced custom appearance. Made from fabricated 14 and 16 gauge type 304 stainless steel or 316 material can be supplied (when specified).



Figure No. 8000SS-8100SS

**8000SS-8100SS Stainless Steel Grease Interceptor**  
Multiple Sizes Available. See [www.jrsmith.com](http://www.jrsmith.com) for details.

Uniquely designed for high traffic food industry applications, Smith's Stainless Steel Grease Interceptor keeps kitchens clean by trapping excess fats, oils and greases (FOGs). Grease interceptors reduce the amount of FOGs entering disposal systems and sewer lines, helping to maintain quality control and cleanliness.

**9600 Series** – Jay R. Smith Mfg. Co. produces durable, sanitary and corrosion-resistant drains which offer lifelong service and enhanced custom appearance. Made from fabricated 14 and 16 gauge type 304 stainless steel or 316 material can be supplied (when specified).



Figure No. 9600-A05SS

**9600 General Purpose Floor Drain with Adjustable Strainer and Clamping Collar for Light Duty Use**  
5" or 6" Round or Square Strainer

General purpose floor drain with adjustable strainer and clamping collar for light duty use, ideal for applications where superior sanitation, corrosion resistance and longevity are required.



Figure No. 9610

**9610 General Purpose Floor Drain for Medium Duty Use**  
6" Round Top

General purpose medium duty floor drain for use in finished and unfinished areas, ideal for applications in areas requiring superior sanitation, corrosion resistance and longevity.

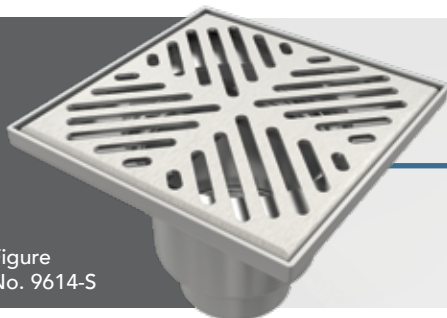


Figure No. 9614-S

**9614-S General Purpose Floor Drain**  
8" Square Top

General purpose medium duty floor drain for use in finished and unfinished moderate traffic areas. Ideal for applications in areas requiring superior sanitation, corrosion resistance and longevity



# SMITH STAINLESS STEEL DRAINAGE PRODUCTS

## 9600 Series



Figure No. 9614-SRF

### 9614-RF-SRF Special Purpose Floor Drain with Special Duty Rim Flow Grate 8" Square or Round Top

Special purpose floor drain with heavy duty rim flow grate for use where perimeter drainage is required. Ideal for applications in areas requiring superior sanitation, corrosion resistance and longevity.



Figure No. 9614

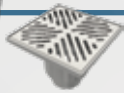


Figure No. 9614-S

### 9614-9615 General Purpose Floor Drain for Medium Duty Use 8" Round Top with 4" or 6" Deep Sump 8" Square Top with 4-3/4" Deep Sump - 9614-S

General purpose medium duty floor drain for use in finished and unfinished moderate traffic areas, ideal for applications in areas requiring superior sanitation, corrosion resistance and longevity.



Figure No. 9620-S

### 9620-9621-S General Purpose Floor Drain 10" Square Top with 4-3/4" Deep Sump -S 10" Square Top with 6-3/4" Deep Sump -S

General purpose light duty floor drain for use in finished and unfinished moderate traffic areas. Ideal for applications in areas requiring superior sanitation, corrosion resistance and longevity.

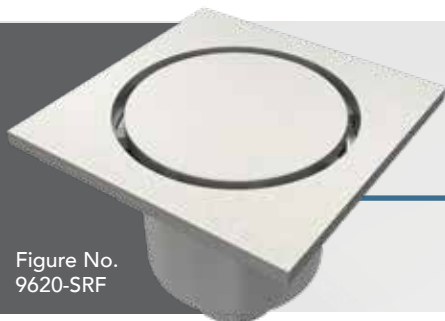


Figure No. 9620-SRF

### 9620-9621-RF-SRF-SBG Special Purpose Floor Drain with Special Duty Grate 10" Round Rim Flow Top with 4-1/2" or 6-1/2" Deep Sump -RF 10" Square Rim Flow Top with 4-1/2" or 6-1/2" Deep Sump -SRF 10" Square Bar Grate Top with 5-1/4" or 7-1/4" Deep Sump -SBG (Medium Duty)

Special purpose floor drain with special duty rim flow grate for use where perimeter drainage is required. Ideal for applications in areas requiring superior sanitation, corrosion resistance and longevity.





# SMITH STAINLESS STEEL DRAINAGE PRODUCTS

## 9600 Series



Figure No. 9620

### 9620-9622 General Purpose Light Duty Floor Drain 10" Round Top with 4", 6" or 8" Deep Sump

General purpose light duty floor drain for use in finished and unfinished moderate traffic areas. Ideal for applications in areas requiring superior sanitation, corrosion resistance and longevity.

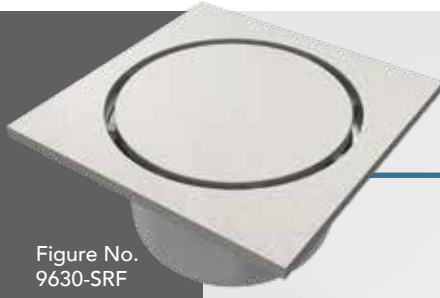


Figure No. 9630-SRF

### 9630-9632-RF-SRF Special Purpose Floor Drain with Special Duty Rim Flow Grate 12" Round Rim Flow Top with 4-1/2", 6-1/2" or 8-1/2" Deep Sump -RF 12" Square Rim Flow Top with 4-1/2", 6-1/2" or 8-1/2" Deep Sump -SRF

Special purpose floor drain with special duty rim flow grate for use where perimeter drainage is required. Ideal for applications in areas requiring superior sanitation, corrosion resistance and longevity.

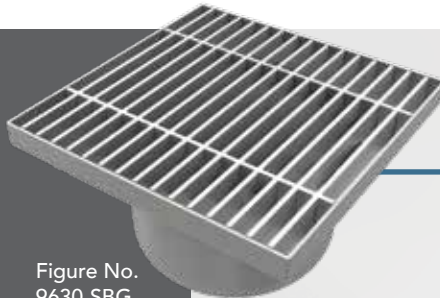


Figure No. 9630-SBG

### 9630-32-SBG General Purpose Medium Duty Area/Floor Drain 12" Square Top Bar Grate with 5-1/4", 7-1/4" or 9-1/4" Deep Sump

General purpose medium duty area/floor drain with bar grate for use in finished and unfinished areas requiring high flow capacity. Ideal for applications in areas requiring superior sanitation, corrosion resistance and longevity.



Figure No. 9630

### 9630-9633 General Purpose Light Duty Floor Drain 12" Round Top with 4", 6", 8", or 10" Deep Sump

General purpose light duty floor drain for use in finished and unfinished moderate traffic areas. Ideal for applications in areas requiring superior sanitation, corrosion resistance and longevity.



# SMITH STAINLESS STEEL DRAINAGE PRODUCTS

## 9600 Series



Figure No. 9635-SRF

### 9635-9638-RF-SRF Special Purpose Floor Drain with Special Duty Rim Flow Grate

14" Square Rim Flow Top with 4-3/4", 6-3/4", 8-3/4" or 10-3/4" Deep Sump -SRF  
14" Round Rim Flow Top with 4-1/2", 6-1/2", 8-1/2" or 10-1/2" Deep Sump -RF

Special purpose floor drain with special duty rim flow grate for use where perimeter drainage is required. Ideal for applications in areas requiring superior sanitation, corrosion resistance and longevity.



Figure No. 9635-SBG

### 9635-38-SBG General Purpose Area/Floor Drain

14" Square Top Bar Grate with 5-1/4", 7-1/4", 9-1/4" or 11-1/4" Deep Sump

General purpose medium duty area/floor drain with bar grate for use in finished and unfinished areas requiring high flow capacity. Ideal for applications in areas requiring superior sanitation, corrosion resistance and longevity.



Figure No. 9642

### 9642-9643 14 Gauge Stainless Steel Floor, Area & Indirect Waste Drains

8" Square Top with 4" or 6" Deep Sump

General purpose medium duty floor drain for use in finished and unfinished moderate traffic areas. Ideal for applications in areas requiring superior sanitation, corrosion resistance and longevity.

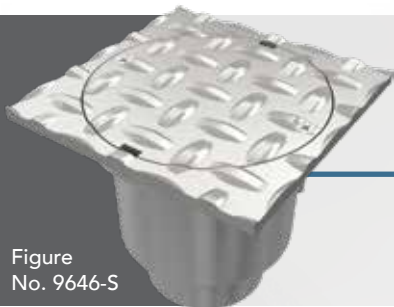


Figure No. 9646-S

### 9646 General Purpose Special Duty Floor Cleanout

6" Round Top  
6-1/2" Square Top -S

General purpose special duty floor cleanout with diamond plate cover and ABS closure plug. Ideal for applications in areas requiring superior sanitation, corrosion resistance and longevity.



Figure No. 9691

### 9691-9699 Area & Indirect Waste Drain

Features Dome Bottom Strainer or Sediment Bucket  
12" Square Top

General purpose area/floor drain for areas where the corrosion resistance of type 304 stainless steel is satisfactory for the intended service. Ideal for areas where superior corrosion resistance, durability and longevity are required.



# SMITH STAINLESS STEEL DRAINAGE PRODUCTS

## 9600 Series



Figure  
No. 9680

### 9680 Large General Purpose Roof Drain

16" Diameter Flange

Large general purpose roof drain for flat roof construction. Large profile dome provides sufficient free area for constant drainage of rain water and protects the drain sump and connected piping from the intrusion of most debris. Wide clamping surface secures flashing and roofing materials without puncturing.



Figure  
No. 9682

### 9682 General Purpose Roof Drain

10 1/2" Diameter Flange

Small general purpose roof drain for flat roof construction. Low profile dome provides sufficient free area for constant drainage of rain water and protects the drain sump and connected piping from the intrusion of most debris. Wide clamping surface secures flashing and roofing materials without puncturing.



Figure  
No. 9685

### 9685 Scupper Drain

Scupper drain used at the junction of the parapet and roof. The angle grate prevents debris from blocking drainage.



Figure  
No. 9650

### 9650 General Purpose P-Trap

- Ideal where a P-trap is required in a corrosive installation
- Schedule 10 nominal wall thickness
- Available in 3", 4" and 6" pipe sizes
- Type 304 stainless steel (regularly furnished), Type 316 stainless steel (optional)



Figure  
No. 9654

### 9654 General Purpose Hub Drain

- Ideal for indirect waste connections
- Schedule 10 nominal wall thickness
- Available sizes: 3" outlet (4" dia. top size), 4" outlet (6" dia. top size) and 6" outlet (8" dia. top size).
- Type 304 stainless steel (regularly furnished), Type 316 stainless steel (optional).



# SMITH STAINLESS STEEL DRAINAGE PRODUCTS

## 9700 Series

**9700 Series** – Jay R. Smith Mfg. Co. produces durable, sanitary and corrosion-resistant drains which offer lifelong service and enhanced custom appearance. Made from ASTM-A351 (CF8) cast equivalent to type 304 rough finished stainless steel. ASTM (CF8M) equivalent to type 316 can be supplied (when specified).



Figure No. 9700

### 9700 General Purpose Floor Drain with Adjustable Strainer Head for Light Duty Use 7" Round

General purpose area/floor drain for areas where the corrosion resistance of type 304 stainless steel is satisfactory for the intended service. Ideal for areas where superior corrosion resistance, durability and longevity are required.



Figure No. 9705

### 9705 Floor Drain with Medium Duty Top and Extended Integral Flange

Special purpose medium duty floor drain with extended integral flange for use in applications where the drain body is welded to a deck or where waterproof traffic floor coverings are applied.



Figure No. 9710

### 9710-9715 General Purpose Floor Drain for Medium Duty Use 8 1/2" Round

General purpose medium duty top floor drain for use in finished or unfinished floors where corrosive materials must be discharged. Ideal for applications where moderate traffic is expected and corrosion resistance is required.



Figure No. 9720

### 9720 Special Purpose Floor Drain with Solid Scoriated Cover and Closure Plug for Medium Duty Use 8 1/2" Round

Special purpose medium duty floor drain with solid scoriated cover and closure plug, used for preventing sewer gases from entering through the drain. Ideal for applications where a solid cover and corrosion resistance is required.



# SMITH STAINLESS STEEL DRAINAGE PRODUCTS

## 9700 Series



Figure No. 9725

### 9725 General Purpose Floor Drain with Adjustable Top 8 1/2" Round

General purpose adjustable top floor drain for use in finished or unfinished applications, containing an adjustable top which permits accurate positioning of the grate to meet finished floor levels. Ideal for applications where moderate traffic is expected and corrosion resistance is required.



Figure No. 9730

### 9730 Shallow Body Floor Drain for Heavy Duty Use 12" Round

General purpose heavy duty top floor drain for use in areas where waste water contains no sediment/debris and construction requires a shallow body, ideal for applications where heavy traffic is expected and corrosion resistance is required.



Figure No. 9735

### 9735 Special Purpose Floor Drain with Adjustable Top, Solid Scoriated Cover and Closure Plug 8 1/2" Round

Special purpose floor drain with adjustable top for use in applications where a solid cover closure plug and corrosion resistance are required. Adjustable top prevents sewer gas from entering the building & permits accurate position of top cover to meet finished floor.



Figure No. 9760

### 9760 Round Deck Plug Type Floor Cleanout 4-1/2", 5-1/2" and 7-1/2" Round Top

Used as a floor cleanout in drainage lines. Ideal for applications where a gas tight spanner type is desired and a corrosion-resistant cleanout is required.



# SMITH STAINLESS STEEL DRAINAGE PRODUCTS

## 9600 Series Trench Drains



Figure No. 9660

### 9660 Modular Stainless Steel Trench Drain System

6" Wide

The 9660 Modular Stainless Steel Trench Drain Series is constructed from 16 gauge, type 304 stainless steel for facilities where hygiene, corrosion resistance, and visibility are imperative. There are 15, 1-meter long sloping, 4, 1-meter non-sloping and 2, 1/2-meter non-sloping channels and catch basins available. 316L stainless optional. See grate options on page 15 for anti-slip to fork lift rated.



Figure No. 9675

### 9675 'Trough/Kettle' Stainless Steel Trench Drain

12" & 18" Wide

The 9675 is a light duty, 'Trough/Kettle' style trench drain fabricated with 14 gauge, type 304 stainless steel for use in kitchens and other food processing applications. The drain body comes standard with a 4" NO-HUB Outlet, sediment bucket, anchor tabs and stainless steel light duty bar grating.

AVAILABLE SIZES	W	L	H
9675-1224	12" (305)	24" (610)	9 1/8" (232)
9675-1236	12" (305)	36" (914)	9 3/16" (233)
9675-1248	12" (305)	48" (1219)	9 1/4" (235)
9675-1260	12" (305)	60" (1524)	9 3/8" (238)
9675-1824	18" (305)	24" (1524)	9 1/8" (232)
9675-1836	18" (305)	36" (1524)	9 3/16" (233)
9675-1848	18" (305)	48" (1524)	9 1/4" (235)
9675-1860	18" (305)	60" (1524)	9 3/8" (238)

Stainless Steel Light Duty Bar Grating with 3/16" (5) x 1" (25.4) Bars at 1/2" (13) Bar Spacing.

Custom Trough Available on Request

Figure No. 9666

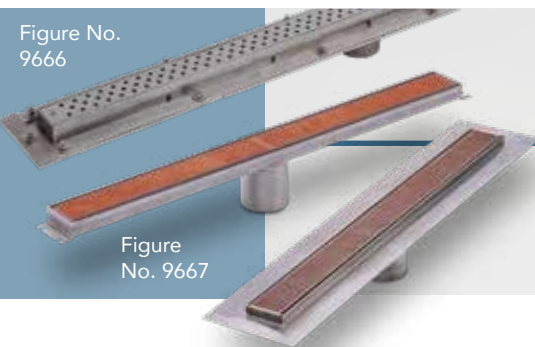


Figure No. 9667

### 9666 & 9667 Stainless Steel ADA Linear Shower Drains

2" Wide

The 9666 and 9667 Fine-Line® Linear Trench Drains are fabricated with 18 gauge, type 304 stainless steel and are ideal for commercial and residential shower stall applications. Both drains come with your choice of a variety of stainless steel perforated grates and a 2" NO-HUB Bottom Outlet. A vandal-resistant grate is available for the 9666.



# SMITH STAINLESS STEEL DRAINAGE PRODUCTS

## 9660 Series Drainage System Grates

Load Class A: Light Duty												
Light Duty, EN1433 Class A - 3,500 lbs - 70 psi for pedestrian, wheelchair and bicycle traffic												
Grate	Material	Grate Fig. Number	Length	Weight lbs.	Open Area per Sq. In.	Load Class	ADA	Heel-Proof	Bicycle	Slip Resistance	HS20	FAA
	Slotted Stainless Steel	9870-450-SS	1m	5.9	35.20	A	X	X	X	29.9	X	X
	Slotted Stainless Steel	9870-450-SS	.5m	3.0	17.60	A	X	X	X	29.9	X	X
	Perforated Stainless Steel	9870-451-SSPA	1m	6.3	28.30	A	X	✓	✓	29.6	X	X
	Perforated Stainless Steel	9870-451-SSPA	.5m	6.3	14.10	A	X	✓	✓	29.6	X	X
Load Class B: Light Duty												
Light Duty, EN1433 Class B - 28,000 lbs - 580 psi for pedestrian, wheelchair and bicycle traffic												
	Mesh Stainless Steel	9870-447-SSADA	1m	8	93.70	B	✓	✓	✓	51.3	X	X
	Mesh Stainless Steel	9870-447-SSADA	.5m	4	46.9	B	✓	✓	✓	51.3	X	X
Load Class C: Heavy Duty												
Heavy Duty, EN1433 Class C - 56,000 lbs. 1,162 psi for commercial pneumatic tire traffic patterns, forklifts, and tractor trailers												
	Mesh Stainless Steel	9870-430-SSM	1m	7.8	121.00	C	X	X	✓	41.3	✓	X
	Mesh Stainless Steel	9870-430-SSM	.5m	3.9	58.00	C	X	X	✓	41.3	✓	X
	Slotted Stainless Steel	9870-455-SSHD	1m	8.8	35.20	C	X	X	X	29.9	✓	X
	Slotted Stainless Steel	9870-455-SSHD	.5m	4.4	17.60	C	X	X	X	29.9	✓	X
	Perforated Stainless Steel	9870-465-SSP	1m	11.3	28.30	C	✓	✓	✓	29.6	✓	X
	Perforated Stainless Steel	9870-465-SSP	.5m	5.7	14.10	C	✓	✓	✓	29.6	✓	X
	Stainless Steel Bar Grate	9870-466-SBG	1m	15.25	94.60	C	X	X	X	—	✓	X
	Stainless Steel Bar Grate	9870-466-SBG	.5m	7.60	47.30	C	X	X	X	—	✓	X
Load Class E: Extra Heavy Duty												
Extra Heavy Duty, EN1433 Class E - 135,000 lbs. - 2,788 psi for commercial solid tire traffic patterns, forklifts and impacts from steel struts or metal wheels												
	Slotted Stainless Steel	9870-490-SSHDE	1m	13.7	35.20	E	X	X	X	29.9	✓	✓
	Slotted Stainless Steel	9870-490-SSHDE	.5m	6.80	17.60	E	X	X	X	29.9	✓	✓

QuickLok® securing device regularly furnished unless otherwise requested.

## JAY R. SMITH MFG. CO. STAINLESS STEEL INTERCEPTOR

Figure Number	Breweries & Bottling Plants	Chemical Plants (Note A)	Dairy Applications	Food Processing & Handling	Healthcare (Hospitals, Clinics, Nursing Homes, etc.)	Pharmaceuticals, Clean Rooms & Laboratories	Energy (Fossil Fuel & Nuclear) (Note A)	Commercial Applications - Kitchens	Commercial Applications- Restrooms & Shower Facilities	NSF Certified	Conforms to ASME A112.14.3 PDI G101	Grate Load Rating (Duty)	Top Size	Body Sump Depth
800SS-8100ss								✓			✓			

## JAY R. SMITH MFG. CO.® STAINLESS STEEL DRAINAGE LINE

Figure Number	Breweries & Bottling Plants	Chemical Plants (Note A)	Dairy Applications	Food Processing & Handling	Healthcare (Hospitals, Clinics, Nursing Homes, etc.)	Pharmaceuticals, Clean Rooms & Laboratories	Energy (Fossil Fuel & Nuclear) (Note A)	Commercial Applications - Kitchens	Commercial Applications- Restrooms & Shower Facilities	NSF Certified	Conforms to ASME A112.6.3 Floor Drains	Grate Load Rating (Duty)	Top Size	Body Sump Depth
9600-A05SS	✓		✓	✓	✓	✓		✓	✓	✓	✓	Heavy	5" Dia	Note 1
9600-A06SS	✓		✓	✓	✓	✓		✓	✓	✓	✓	Medium	6" Dia	Note 1
9600-B05SS	✓		✓	✓	✓	✓		✓	✓	✓	✓	Medium	5" SQ	Note 1
9600-B06SS	✓		✓	✓	✓	✓		✓	✓	✓	✓	Medium	6" SQ	Note 1
9610	✓	✓	✓	✓	✓	✓		✓	✓	✓	✓	X Heavy	6" Dia.	4"
9614	✓		✓	✓	✓	✓		✓	✓	✓	✓	Medium	8" Dia	4"
9614-RF	✓	✓	✓	✓	✓	✓		✓	✓	✓	✓	Special	8" Dia	4-1/2"
9614-S	✓		✓	✓	✓	✓		✓	✓	✓	✓	Medium	8" SQ	4-3/4"
9614-SBG	✓		✓	✓	✓	✓		✓	✓	✓	✓	Medium	8" SQ	5-1/4"
9614-SRF	✓	✓	✓	✓	✓	✓		✓	✓	✓	✓	Special	8" SQ	4-1/2"
9615	✓		✓	✓	✓	✓		✓	✓	✓	✓	Medium	8" Dia.	6"
9620												Light	10" Dia	4"
9620-RF	✓	✓	✓	✓	✓	✓		✓	✓	✓	✓	Special	10" Dia	4-1/2"
9620-S												Light	10" SQ	4-3/4"
9620-SBG	✓		✓	✓	✓	✓		✓	✓	✓	✓	Medium	10" SQ	5-1/4"
9620-SRF	✓	✓	✓	✓	✓	✓		✓	✓	✓	✓	Special	10" SQ	4-1/2"
9621												Light	10" Dia	6"
9621-RF	✓	✓	✓	✓	✓	✓		✓	✓	✓	✓	Special	10" Dia	6-1/2"
9621-S												Light	10" SQ	6-3/4"
9621-SBG	✓		✓	✓	✓	✓		✓	✓	✓	✓	Medium	10" SQ	7-1/4"
9621-SRF	✓	✓	✓	✓	✓	✓		✓	✓	✓	✓	Special	10" SQ	6-1/2"
9622												Light	10" Dia	8"

Note 1: Adjustable Strainer Head Style Drain- Strainer Adjustment: Min 1/2" - Max 1-1/2".

Note 2: Conforms to ASME A112.36.2M Cleanouts.

Note 3: Body Depths Available: 9691/96 - 4" / 9692/97 - 6" / 9693/98 - 8" / 9694/99 - 10".

Note 4: Conforms to ASME A112.6.4 Roof, Deck & Balcony Drains.

Note A: For Energy (Fossil Fuel & Nuclear) and Chemical Plant Applications, use Smith's 9700 Series of Cast Stainless Steel Drains. Refer to [www.jrsmith.com](http://www.jrsmith.com), 9000 Series - Specialty, Stainless and Carbon.



**JAY R. SMITH MFG. CO.® STAINLESS STEEL DRAINAGE LINE**

Figure Number	Breweries & Bottling Plants	Chemical Plants (Note A)	Dairy Applications	Food Processing & Handling	Healthcare (Hospitals, Clinics, Nursing Homes, etc.)	Pharmaceuticals, Clean Rooms & Laboratories	Energy (Fossil Fuel & Nuclear) (Note A)	Commercial Applications - Kitchens	Commercial Applications - Restrooms & Shower Facilities	NSF Certified	Conforms to ASME A112.6.3 Floor Drains	Grate Load Rating (Duty)	Top Size	Body Sump Depth
9630				✓	✓	✓		✓	✓	✓	✓	Light	12" Dia	4"
9630-RF	✓	✓	✓	✓	✓	✓		✓	✓	✓	✓	Special	12" Dia	4-1/2"
9630-S				✓	✓	✓		✓	✓	✓	✓	Light	12" SQ	4-3/4"
9630-SBG	✓		✓	✓	✓	✓		✓	✓	✓	✓	Medium	12" SQ	5-1/4"
9630-SRF	✓	✓	✓	✓	✓	✓		✓	✓	✓	✓	Special	12" SQ	4-1/2"
9631				✓	✓	✓		✓	✓	✓	✓	Light	12" Dia	6"
9631-RF	✓	✓	✓	✓	✓	✓		✓	✓	✓	✓	Special	12" Dia	6-1/2"
9631-S				✓	✓	✓		✓	✓	✓	✓	Light	12" SQ	6-3/4"
9631-SBG	✓		✓	✓	✓	✓		✓	✓	✓	✓	Medium	12" SQ	7-1/4"
9631-SRF	✓	✓	✓	✓	✓	✓		✓	✓	✓	✓	Special	12" SQ	6-1/2"
9632				✓	✓	✓		✓	✓	✓	✓	Light	12" Dia	8"
9632-RF	✓	✓	✓	✓	✓	✓		✓	✓	✓	✓	Special	12" Dia	8-1/2"
9632-S				✓	✓	✓		✓	✓	✓	✓	Light	12" SQ	8-3/4"
9632-SBG	✓		✓	✓	✓	✓		✓	✓	✓	✓	Medium	12" SQ	9-1/4"
9632-SRF	✓	✓	✓	✓	✓	✓		✓	✓	✓	✓	Special	12" SQ	8-1/2"
9633				✓	✓	✓		✓	✓	✓	✓	Light	12" Dia	10"
9635-RF	✓	✓	✓	✓	✓	✓		✓	✓	✓	✓	Special	14" Dia	4-1/2"
9635-S				✓	✓	✓		✓	✓	✓	✓	Light	14" SQ	4-3/4"
9635-SBG	✓		✓	✓	✓	✓		✓	✓	✓	✓	Medium	14" SQ	5-1/4"
9635-SRF	✓	✓	✓	✓	✓	✓		✓	✓	✓	✓	Special	14" SQ	4-1/2"
9636-RF	✓	✓	✓	✓	✓	✓		✓	✓	✓	✓	Special	14" Dia	6-1/2"
9636-S				✓	✓	✓		✓	✓	✓	✓	Light	14" SQ	6-3/4"
9636-SBG	✓		✓	✓	✓	✓		✓	✓	✓	✓	Medium	14" SQ	7-1/4"
9636-SRF	✓	✓	✓	✓	✓	✓		✓	✓	✓	✓	Special	14" SQ	6-1/2"
9637-RF	✓	✓	✓	✓	✓	✓		✓	✓	✓	✓	Special	14" Dia	8-1/2"
9637-S				✓	✓	✓		✓	✓	✓	✓	Light	14" SQ	8-3/4"
9637-SBG	✓		✓	✓	✓	✓		✓	✓	✓	✓	Medium	14" SQ	9-1/4"
9637-SRF	✓	✓	✓	✓	✓	✓		✓	✓	✓	✓	Special	14" SQ	8-1/2"

**JAY R. SMITH MFG. CO.® STAINLESS STEEL DRAINAGE LINE**

Figure Number	Breweries & Bottling Plants	Chemical Plants (Note A)	Dairy Applications	Food Processing & Handling	Healthcare (Hospitals, Clinics, Nursing Homes, etc.)	Pharmaceuticals, Clean Rooms & Laboratories	Energy (Fossil Fuel & Nuclear) (Note A)	Commercial Applications - Kitchens	Commercial Applications- Restrooms & Shower Facilities	NSF Certified	Conforms to ASME A112.6.3 Floor Drains	Grate Load Rating (Duty)	Top Size	Body Sump Depth
9638-RF	✓	✓	✓	✓	✓	✓		✓	✓	✓	✓	Special	14" Dia	10-1/2"
9638-S				✓	✓	✓		✓	✓	✓	✓	Light	14" SQ	10-3/4"
9638-SBG	✓		✓	✓	✓	✓		✓	✓	✓	✓	Medium	14" SQ	11-1/4"
9638-SRF	✓	✓	✓	✓	✓	✓		✓	✓	✓	✓	Special	14" SQ	10-1/2"
9642	✓		✓	✓	✓	✓		✓	✓	✓	✓	X Heavy	8" SQ	4"
9643	✓		✓	✓	✓	✓		✓	✓	✓	✓	X Heavy	8" SQ	6"
9646 Cleanout	✓	✓	✓	✓	✓	✓		✓	✓	✓	✓	Special	6" Dia	4"
9646-S Cleanout	✓	✓	✓	✓	✓	✓		✓	✓	✓	✓	Special	6-1/2" SQ	4-3/8"
9691-9699				✓	✓	✓		✓	✓	✓	✓	Light	12" SQ	4" - 10" Note 3
9691-9699-61				✓	✓	✓		✓	✓	✓	✓	Light	12" SQ	4" - 10" Note 3
9691-9699-63	✓		✓	✓	✓	✓		✓	✓	✓	✓	Medium	12" SQ	4" - 10" Note 3
9691-9699-64	✓		✓	✓	✓	✓		✓	✓	✓	✓	Heavy	12" SQ	4" - 10" Note 3
9691-9699-66	✓		✓	✓	✓	✓		✓	✓	✓	✓	X Heavy	12" SQ	4" - 10" Note 3
9691-9699-69										✓	✓	X Heavy	12" SQ	4" - 10" Note 3
9680	✓	✓	✓	✓	✓	✓	✓	✓	✓		✓	Large Roof Drain	16" Dia Flange	N/A
9682	✓	✓	✓	✓	✓	✓	✓	✓	✓		✓	Roof Drain	10-1/2" Dia Flange	N/A
9685	✓	✓	✓	✓	✓	✓	✓	✓	✓		✓	Scupper Drain	N/A	N/A

Note 1: Adjustable Strainer Head Style Drain—Strainer Adjustment: Min 1/2" - Max 1-1/2".

Note 2: Conforms to ASME A112.36.2M Cleanouts.

Note 3: Body Depths Available: 9691/96 - 4" / 9692/97 - 6" / 9693/98 - 8" / 9694/99 - 10".

Note 4: Conforms to ASME A112.6.4 Roof, Deck & Balcony Drains.

Note A: For Energy (Fossil Fuel & Nuclear) and Chemical Plant Applications, use Smith's 9700 Series of Cast Stainless Steel Drains. Refer to [www.jrsmith.com](http://www.jrsmith.com), 9000 Series - Specialty, Stainless and Carbon.

## JAY R. SMITH MFG. CO.® CAST STAINLESS STEEL DRAINS

Figure Number	Breweries & Bottling Plants	Chemical Plants	Dairy Applications	Food Processing & Handling	Healthcare (Hospitals, Clinics, Nursing Homes, etc.)	Pharmaceuticals, Clean Rooms & Laboratories	Energy (Fossil & Nuclear)	Commercial Applications- Kitchens	Commercial Applications- Restrooms & Shower Facilities	NSF Certified	Conforms to ASME A112.6.3 Floor Drains	Grate Loading Rating (Duty)	Top Size	Body Sump Depth
9700	✓	✓		✓	✓	✓	✓	✓	✓		✓		7" Dia	Note 5
9703 Funnel	✓	✓	✓	✓	✓	✓	✓	✓				N/A	4" Dia	4-1/4"
9704 Funnel	✓	✓	✓	✓	✓	✓	✓	✓				N/A	6" Dia	4-1/2"
9705	✓	✓	✓			✓	✓				✓	N/A	8-3/4 X	4-1/2"
9710/9715											✓		3-3/4"	xxxx
9713/9718	✓	✓	✓			✓	✓				✓		8-1/2"	1-1/2"
9720	✓	✓	✓			✓	✓				✓		8-1/2"	3-1/2"
9725	✓	✓	✓			✓	✓				✓		8-1/2"	1-1/2"
9730							✓						8-1/2"	1-5/8" Min
9733													8-1/2"	3-5/8" Max
9734														
9735							✓							
9740														
9745														
9750														
9755														
9759														
9760							✓							
9770														
9775														
9780														
9785														
9790														
9795														

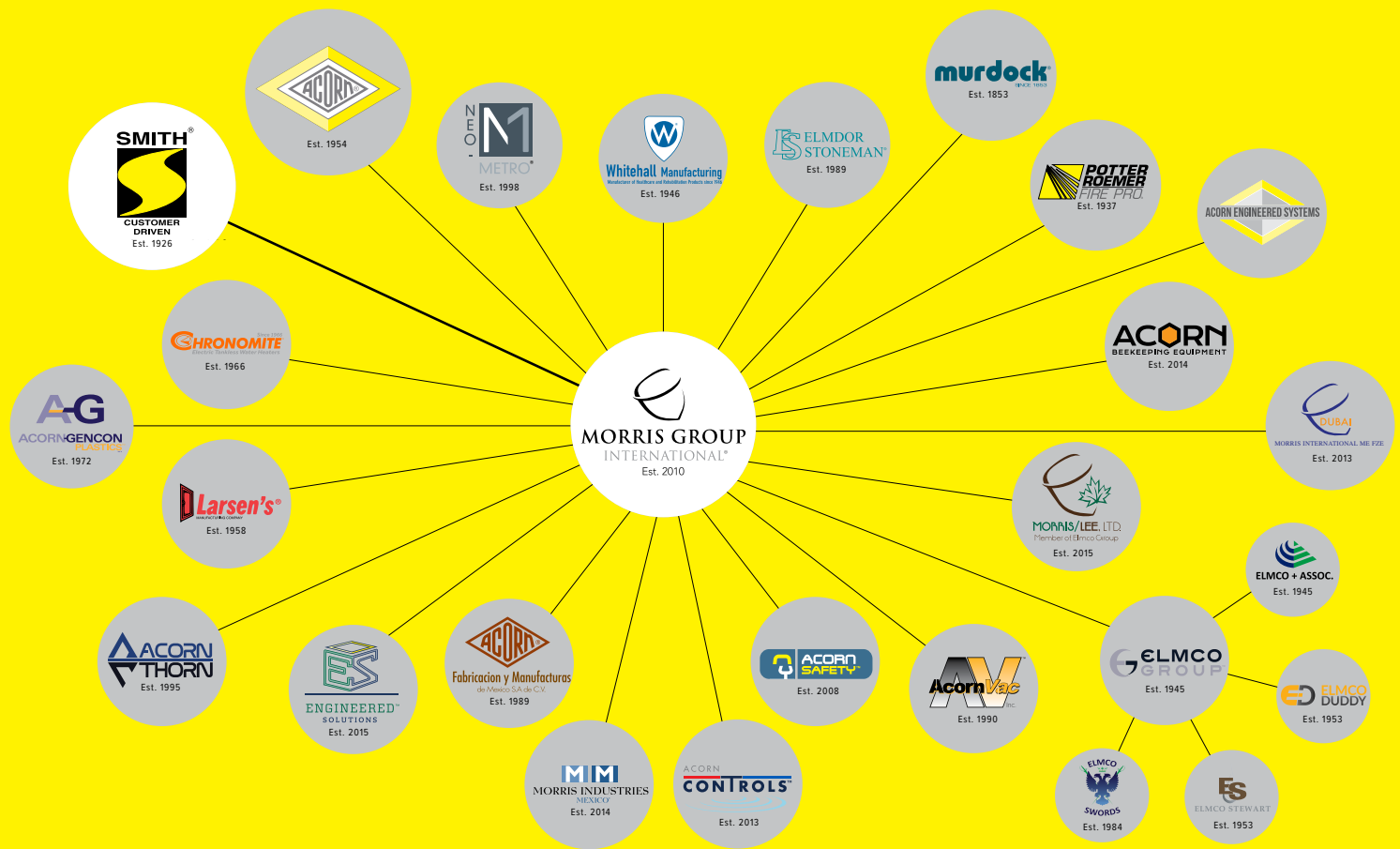
Note 1: Adjustable Strainer Head Style Drain— Strainer Adjustment: Min 1/2" - Max 1-1/2".

Note 2: Conforms to ASME A112.36.2M Cleanouts.

Note 3: Body Depths Available: 9691/96 – 4" / 9692/97 – 6" / 9693/98 – 8" / 9694/99 – 10".

Note 4: Conforms to ASME A112.6.4 Roof, Deck & Balcony Drains.

Note A: For Energy (Fossil Fuel & Nuclear) and Chemical Plant Applications, use Smith's 9700 Series of Cast Stainless Steel Drains. Refer to [www.jrsmith.com](http://www.jrsmith.com), 9000 Series – Specialty, Stainless and Carbon.



**JAY R. SMITH MFG. CO.**  
MEMBER OF MORRIS GROUP INTERNATIONAL

2781 Gunter Park Dr. East • Montgomery, AL 36109-1405 United States  
(334) 277-8520 • www.jrsmith.com

## INNOVATIVE SPIRIT AND ENGINEERING FOUNDATION

“What sets us apart from competitors is our engineering and spirit. We have a ‘can-do’ spirit. If you ask us to do something, we will do it or figure out how to do it. That’s the part our customers like, that’s the part we like.”

- Don Morris, President and CEO, Morris Group International



**MORRIS GROUP**  
INTERNATIONAL®

BRANDS BUILT TO LAST!™

[morriscgroup.co](http://morriscgroup.co)

SPM0623  
0618